

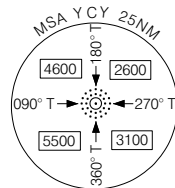
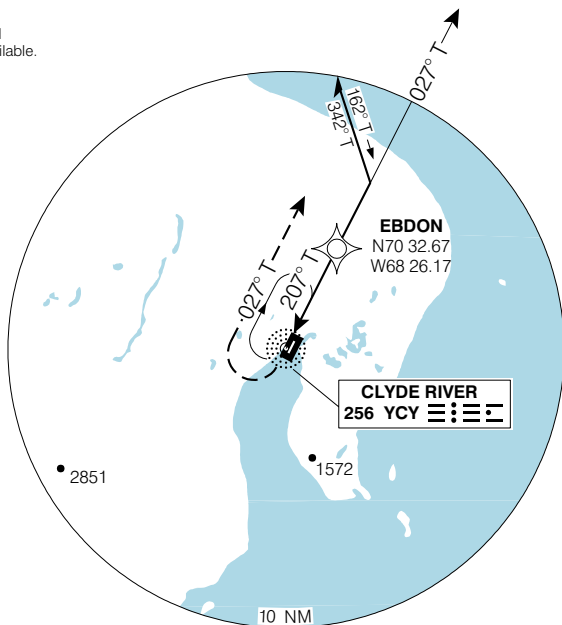
NDB RWY 20 TRUE (GNSS)

CLYDE RIVER
CLYDE RIVER NU

NO CTL - BCST INTENTIONS ON 126.7 WITHIN 15 MIN OF ETA AND PRIOR TO DESCENT, THEN ON MF 5 MIN PRIOR TO COMMENCING APCH	AWOS 124.6	QAPRT RADIO 122.1 (MF 5 NM)	ELEV 87 TDZE 20T 87
	CYCY		

Altimeter setting available ltd hrs.

Verify runway unobstructed when A/G advisory not available.



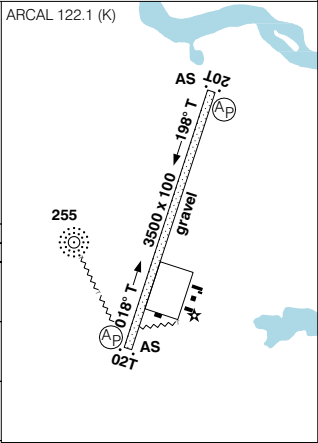
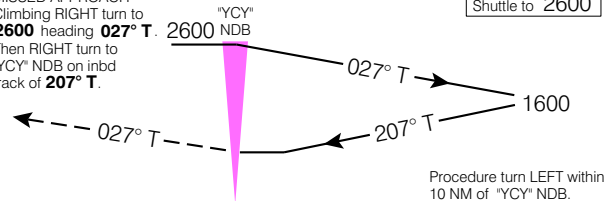
SAFE ALT 100 NM **8600**

MISSED APPROACH

Climbing RIGHT turn to **2600** heading **027° T**. **2600** NDB
Then RIGHT turn to "YCY" NDB on inbd track of **207° T**.

Shuttle to **2600**

ARCAL 122.1 (K)



CATEGORY	A	B	C	D
NDB	620	(533)	1 ¾	
* CIRCLING	700	(613)	2	900 (813) 2 ½

NDB RWY 20 TRUE (GNSS)

N70 29 10 W68 31 00

VAR 46° W

CLYDE RIVER NU
CLYDE RIVER

EFF 13 APR 06 CHANGE: GPS to GNSS; Landing chart

NAD83

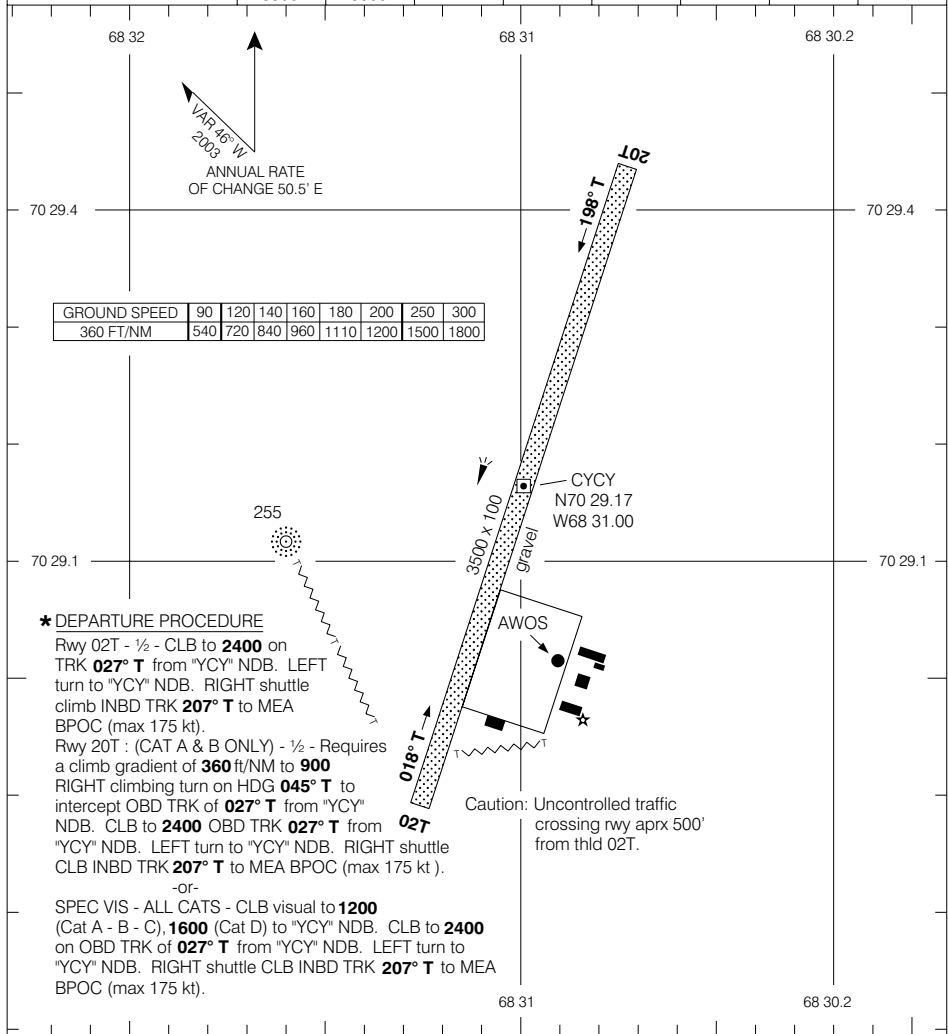
© 2006 Her Majesty The Queen in Right of Canada, Department of Natural Resources. All rights reserved. Source of Canadian Civil Aeronautical Data: © 2006 NAV CANADA. All rights reserved.

CLYDE RIVER
CLYDE RIVER NU

AERODROME CHART

AWOS 124.6	APRT RADIO 122.1 (MF 5 NM)
-----------------------------	---

DECLARED DISTANCES	02T	20T					
	TORA	3500	3500				
	TODA	4500	4500				
	ASDA	3500	3500				
	LDA	3500	3500				



TAKE-OFF MINIMA	SCALE IN FEET
Rwys 02T; 20T: *	1000 500 0 1000

© 2006 Her Majesty The Queen in Right of Canada, Department of Natural Resources All rights reserved Source of Canadian Civil Aeronautical Data: © 2006 NAV CANADA All rights reserved