

RNAV (GNSS) B

DAWSON CITY
DAWSON CITY YT

PAL EDMONTON CENTRE 134.65	ARR/DEP WHITEHORSE RDO (RCO) 126.7	APRT RADIO 122.1 (MF 5 NM) O/T TFC 122.1	ELEV 1215
---	---	---	------------------

Altimeter setting
avbl ltd hrs.

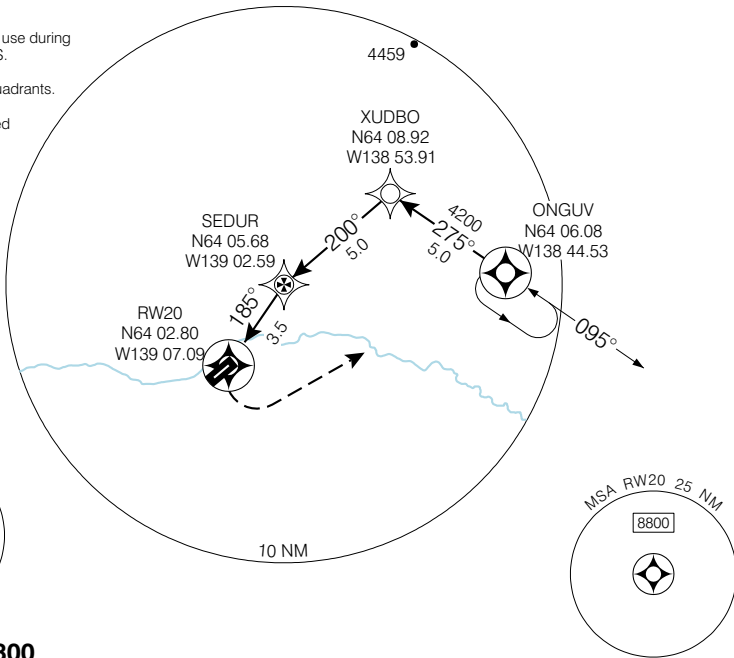
CYDA

Rising terrain penetrates PAPI
approach slope aprx. 1.9 NM
from thld Rwy 02.

Authorization required for use during
hrs of darkness. See CFS.

Mountainous terrain all quadrants.

Verify runway unobstructed
when A/G advisory
not available.

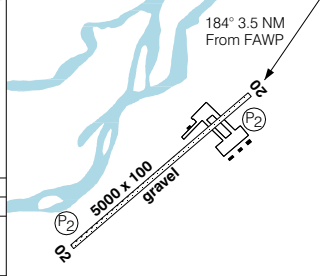
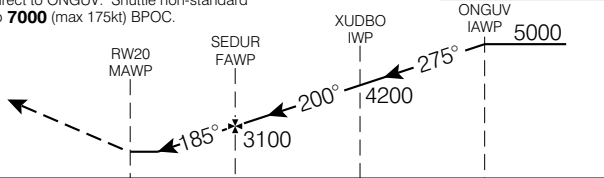


SAFE ALT 100 NM **9800**

MISSED APPROACH
Climbing LEFT turn to **5000**
direct to ONGUV. Shuttle non-standard
to **7000** (max 175kt) BPOC.

Shuttle non-standard to
5000 (max 175kt)

Right hand circuits
Rwy 20



CATEGORY	A	B	C	D
*CIRCLING	2840	(1625)	3	2980 (1765) 3

P2 - 02 - 3°, 20 - 4°

Knots	70	90	110	130	150
Min:Sec					

RNAV (GNSS) B

N64 02 35 W139 07 40 VAR 29° E (1996)

DAWSON CITY YT
DAWSON CITY
NAD83

EFF 13 APR 06 CHANGE: GPS to GNSS

© 2006 Her Majesty The Queen in Right of Canada, Department of Natural Resources. All rights reserved. Source of Canadian Civil Aeronautical Data: © 2006 NAV CANADA. All rights reserved.



Geomatics Canada

DAWSON CITY
DAWSON CITY YT

NDB A

PAL EDMONTON CENTRE 134.65	ARR/DEP WHITEHORSE RDO (RCO) 126.7	APRT RADIO 122.1 (MF 5 NM) O/T TFC 122.1	ELEV 1215
---	---	---	------------------

Altimeter setting
avbl ltd hrs.

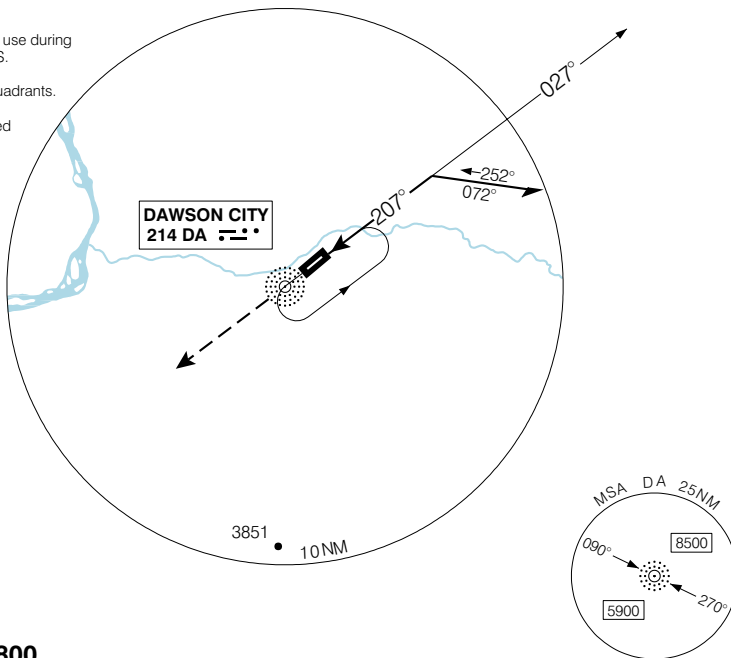
Rising terrain penetrates PAPI
approach slope appr. 1.9 NM
from thld Rwy 02.

Authorization required for use during
hrs of darkness. See CFS.

Mountainous terrain all quadrants.

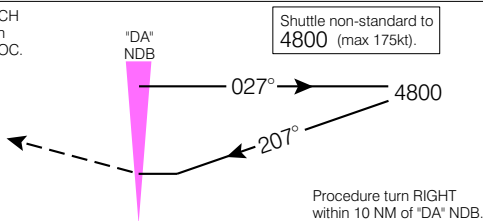
Verify runway unobstructed
when A/G advisory
not available.

CYDA

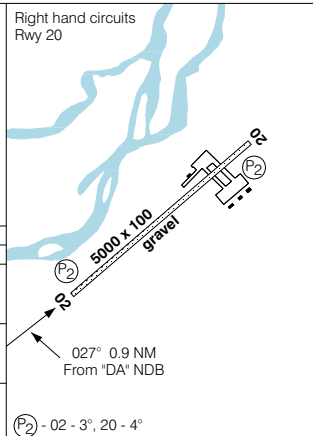


SAFE ALT 100 NM **9800**

MISSED APPROACH
Climb to **5900** on
track of **207°** BPOC.



Right hand circuits
Rwy 20



CATEGORY	A	B	C	D												
CIRCLING	3300	(2085)	3	3400 (2185) 3												
<table border="1"> <tr> <td>Knots</td> <td>70</td> <td>90</td> <td>110</td> <td>130</td> <td>150</td> </tr> <tr> <td>Min:Sec</td> <td></td> <td></td> <td></td> <td></td> <td></td> </tr> </table>					Knots	70	90	110	130	150	Min:Sec					
Knots	70	90	110	130	150											
Min:Sec																

NDB A

N64 02 35 W139 07 40

VAR 26° E

EFF 27 OCT 05 CHANGE: Dawson City; NDB

DAWSON CITY YT
DAWSON CITY
NAD83



Geomatics Canada

DAWSON CITY
DAWSON CITY YT

AERODROME CHART

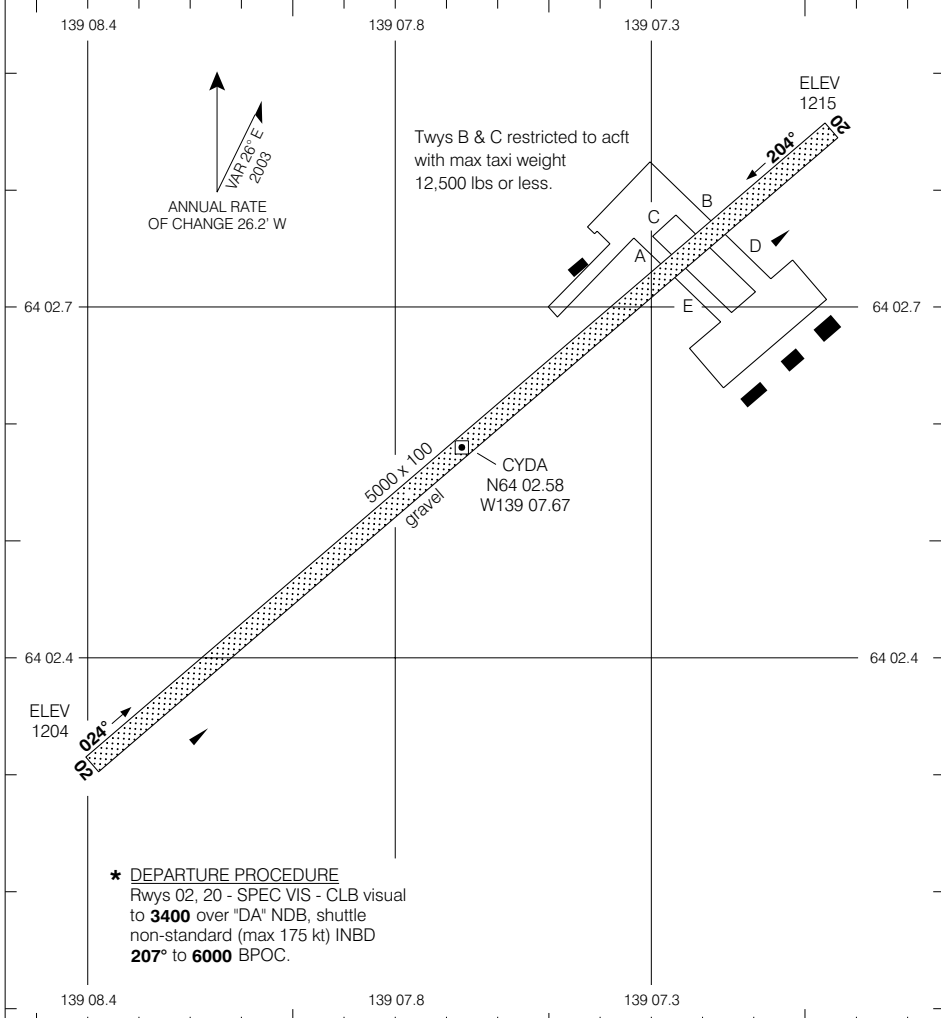
APRT RADIO
122.1 (MF 5 NM)
O/T TFC 122.1

DEP
WHITEHORSE RDO (RCO)
126.7

DECLARED DISTANCES

	02	20					
TORA	5000	5000					
TODA	5200	5200					
ASDA	5000	5000					
LDA	5000	5000					

© 2005 Her Majesty The Queen in Right of Canada, Department of Natural Resources



Source of Canadian Civil Aeronautical Data © 2005 NAV CANADA

TAKE-OFF MINIMA

Rwys 02; 20: *

SCALE IN FEET



AERODROME CHART

EFF 22 DEC 05

CHANGE: Editorial

DAWSON CITY YT
DAWSON CITY
NAD83