

NDB RWY 30 (GNSS)

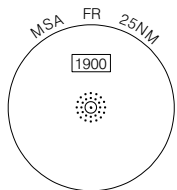
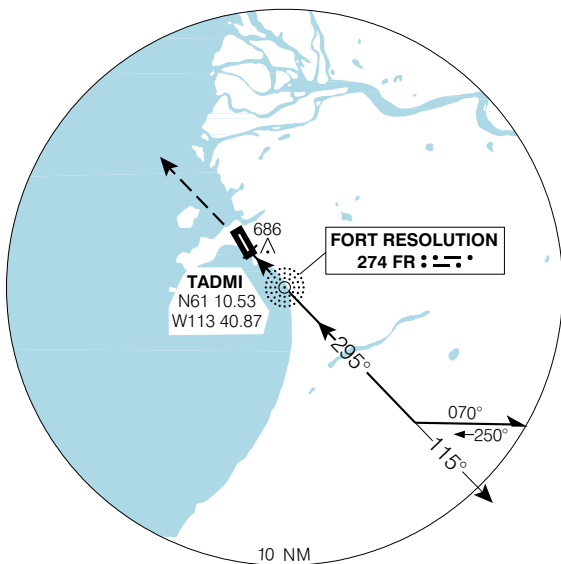
FORT RESOLUTION
FORT RESOLUTION NT

| | | |
|--|---|--------------------|
| ARR/DEP YELLOWKNIFE RADIO 126.7 | APRT RADIO 122.1 (MF 5 NM) O/T TFC 122.1 | ELEV 526 |
| | | TDZE 30 526 |

When using Hay River altimeter setting, add **150'** to all procedure altitudes

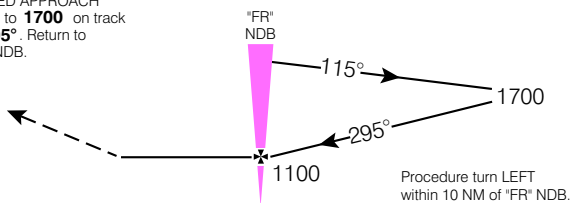
Verify runway unobstructed when A/G advisory not available.

CYFR

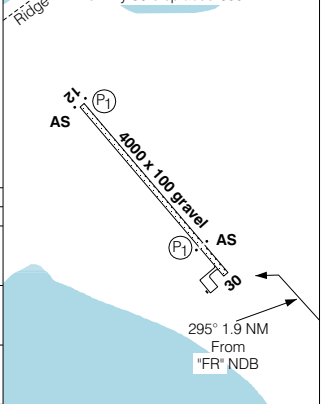


SAFE ALT 100 NM **4000**

MISSED APPROACH
Climb to **1700** on track of **295°**. Return to "FR" NDB.



ARCAL 122.1 (J)
Thld Rwy 30 displaced 655'



| CATEGORY | A | B | C | D | |
|------------------------|-------------|-------------|-------------|-------------|-------------|
| NDB | 1000 | (474) | 1 ½ | | |
| CIRCLING | 1040 | (514) 1 ½ | 1040 | 1140 | |
| | | | (514) 2 | (614) 2 | |
| "FR" NDB to MAP 1.9 NM | | | | | |
| Knots | 70 | 90 | 110 | 130 | 150 |
| Min:Sec | 1:43 | 1:20 | 1:05 | 0:55 | 0:48 |

NDB RWY 30 (GNSS)

N61 10 51 W113 41 23

VAR 21° E

FORT RESOLUTION NT
FORT RESOLUTION

EFF 13 APR 06 CHANGE: GPS to GNSS

NAD83



Geomatics Canada

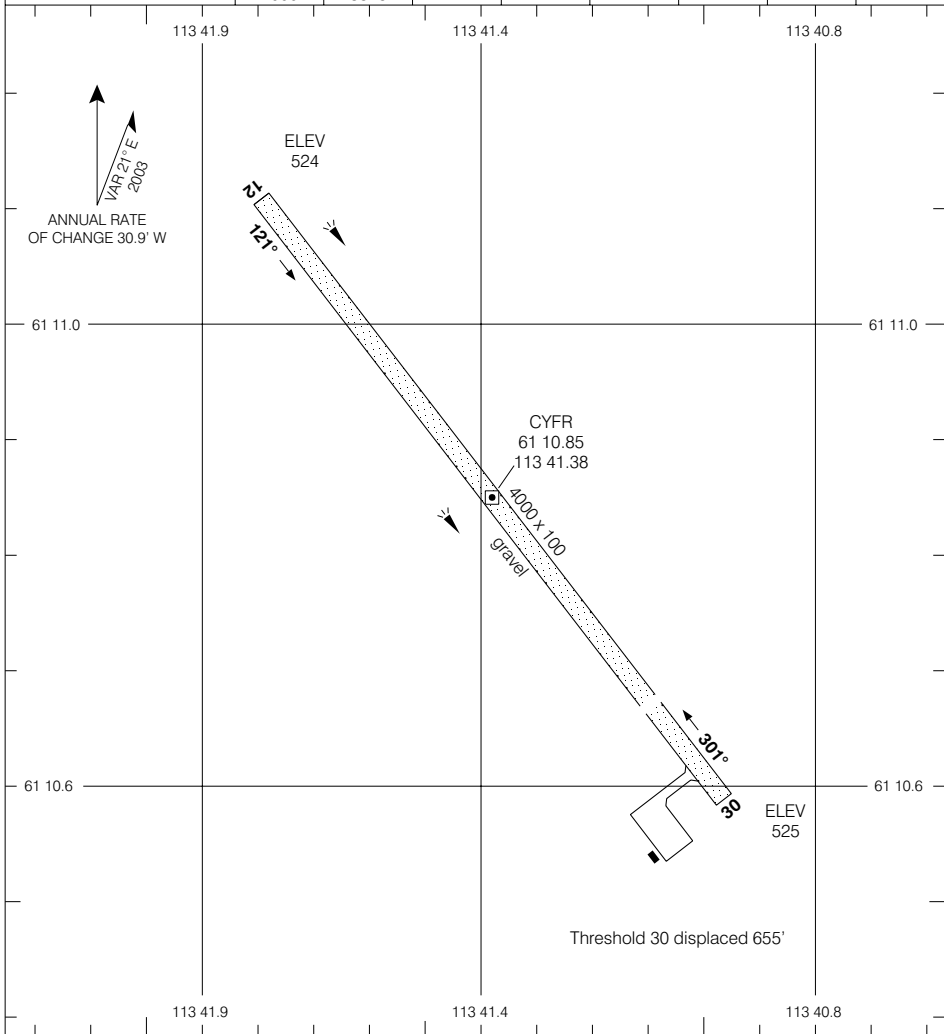
FORT RESOLUTION
FORT RESOLUTION NT

AERODROME CHART

APRT RADIO
122.1 (MF 5 NM)
O/T TFC 122.1

DECLARED DISTANCES

| | 12 | 30 | | | | | | |
|------|-----------|-----------|--|--|--|--|--|--|
| TORA | 4000 | 4000 | | | | | | |
| TODA | 5000 | 5000 | | | | | | |
| ASDA | 4000 | 4000 | | | | | | |
| LDA | 4000 | 3345 | | | | | | |



© 2005 Her Majesty The Queen in Right of Canada, Department of Natural Resources

Source of Canadian Civil Aeronautical Data © 2005 NAV CANADA

TAKE-OFF MINIMA

Rwys 12; 30: ½

SCALE IN FEET



AERODROME CHART

EFF 22 DEC 05

CHANGE: Editorial

FORT RESOLUTION NT
FORT RESOLUTION