

RNAV(GNSS) RWY 13

AKLAVIK
AKLAVIK NT

ARR EDMONTON CENTRE 132.4	APRT RADIO 122.1 (MF 5 NM) O/T TFC 122.1	ELEV 23
		TDZE 13 20

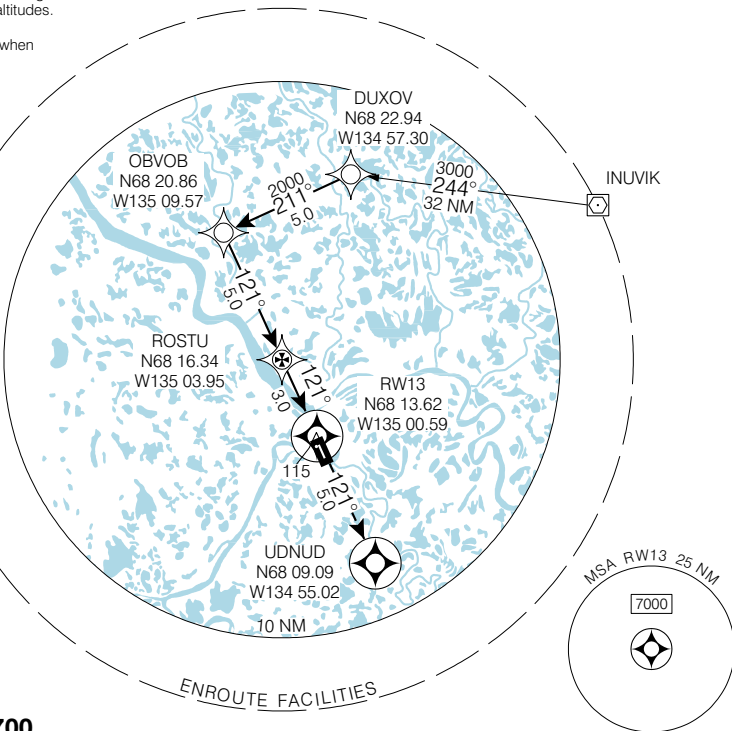
© 2006 Her Majesty The Queen in Right of Canada, Department of Natural Resources. All rights reserved

Source of Canadian Civil Aeronautical Data: © 2006 NAV CANADA. All rights reserved

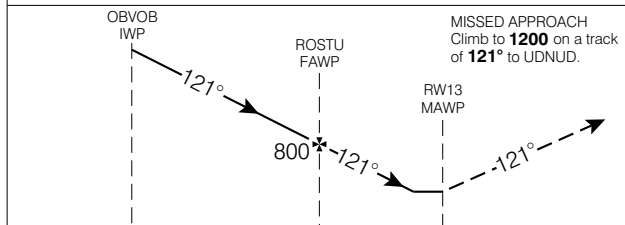
When using Inuvik altimeter setting, add **110'** to all procedure altitudes.

Verify runway unobstructed when A/G advisory not available.

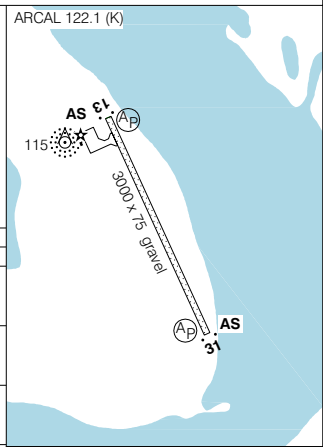
CYKD



SAFE ALT 100 NM **7700**



CATEGORY	A		B		C		D	
LNAV / VNAV	NOT AUTHORIZED							
LNAV	520		(500)		1 ½			
CIRCLING	540		(517) 1 ½		540		640	
					(517) 2		(617) 2	



Knots	70	90	110	130	150
Min:Sec					

RNAV(GNSS) RWY 13

N68 13 24 W135 00 21 VAR 35° E (1996)

AKLAVIK NT

EFF 13 APR 06 CHANGE: GPS to GNSS; ELEV; minimas

AKLAVIK
NAD83

RNAV(GNSS) RWY 31

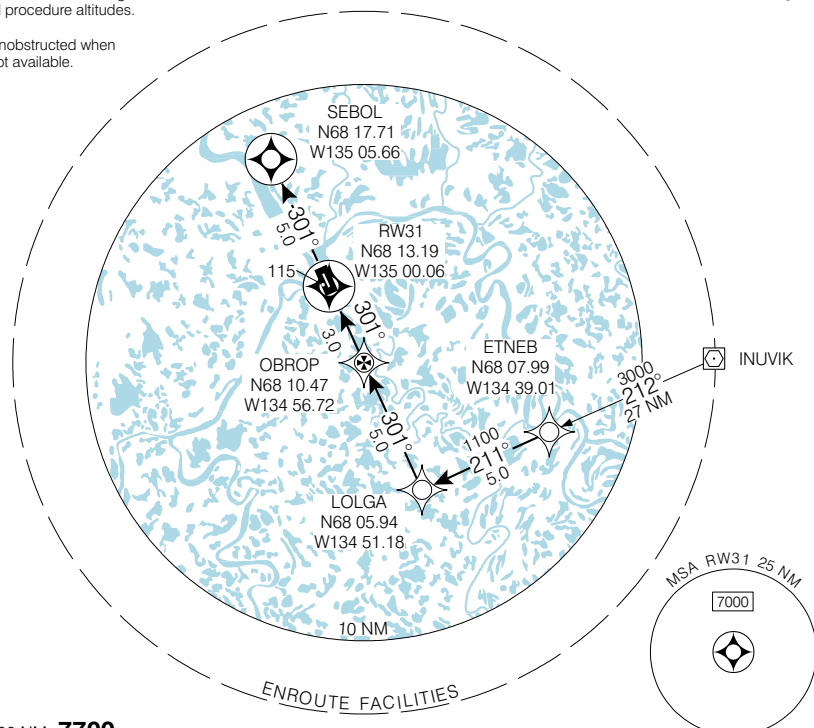
AKLAVIK
AKLAVIK NT

ARR EDMONTON CENTRE 132.4	APRT RADIO 122.1 (MF 5 NM) O/T TFC 122.1	ELEV 23
		TDZE 31 20

When using Inuvik altimeter setting, add **110'** to all procedure altitudes.

Verify runway unobstructed when A/G advisory not available.

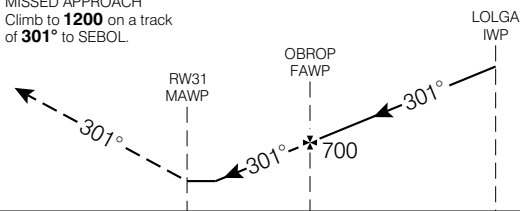
CYKD



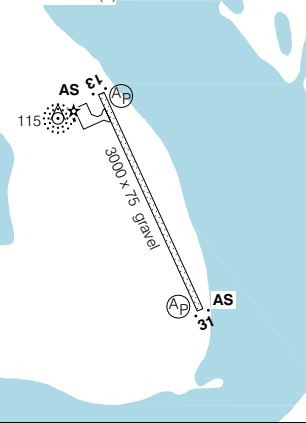
SAFE ALT 100 NM **7700**

MISSED APPROACH

Climb to **1200** on a track of **301°** to SEBOL.



ARCAL 122.1 (K)



CATEGORY	A	B	C	D
LNAV / VNAV	NOT AUTHORIZED			
LNAV	520	(500)	1 ½	
CIRCLING	540	(517) 1 ½	540	640
			(517) 2	(617) 2

Knots	70	90	110	130	150
Min:Sec					

RNAV(GNS) RWY 31

N68 13.24 W135 00.21

VAR 35° E (1996)

AKLAVIK NT

EFF 13 APR 06 CHANGE: GPS to GNS; ELEV; minimas

AKLAVIK

NAD83



NDB A

Geomatics Canada

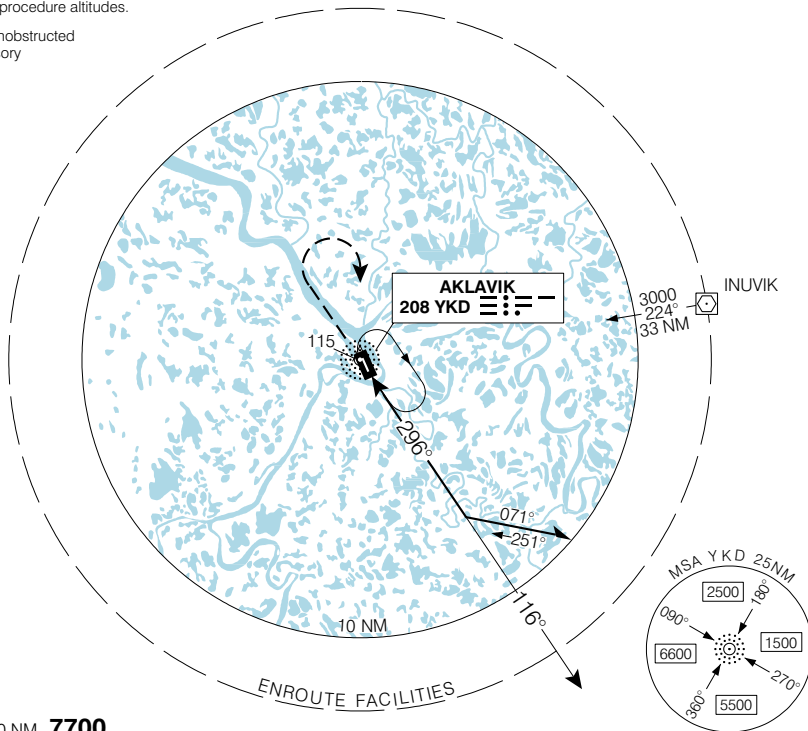
AKLAVIK
AKLAVIK NT

ARR EDMONTON CENTRE 132.4	APRT RADIO 122.1 (MF 5 NM) O/T TFC 122.1	ELEV 23
--	---	----------------

When using Inuvik altimeter setting, add **110'** to all procedure altitudes.

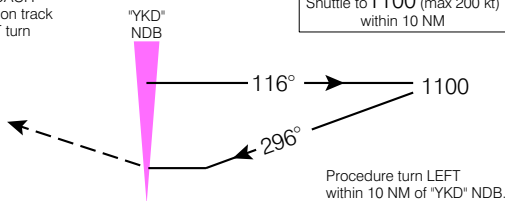
Verify runway unobstructed when A/G advisory not available.

CYKD

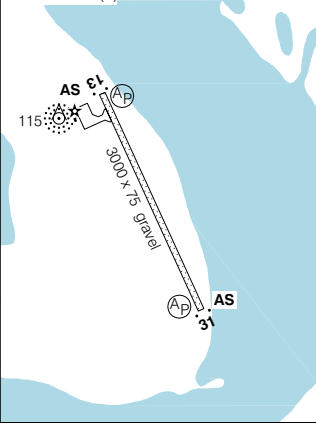


SAFE ALT 100 NM 7700

MISSED APPROACH
Climb to **1100** on track of **296°**. **RIGHT** turn to "YKD" NDB.



ARCAL 122.1 (K)



CATEGORY	A	B	C	D
CIRCLING	540 (517) 1 ½		540 (517) 2	640 (617) 2

Knots	70	90	110	130	150
Min:Sec					

NDB A

EFF 13 APR 06 CHANGE: ELEV; minimas

N68 13 24 W135 00 21

VAR 30° E

AKLAVIK NT
AKLAVIK
NAD83



AERODROME CHART

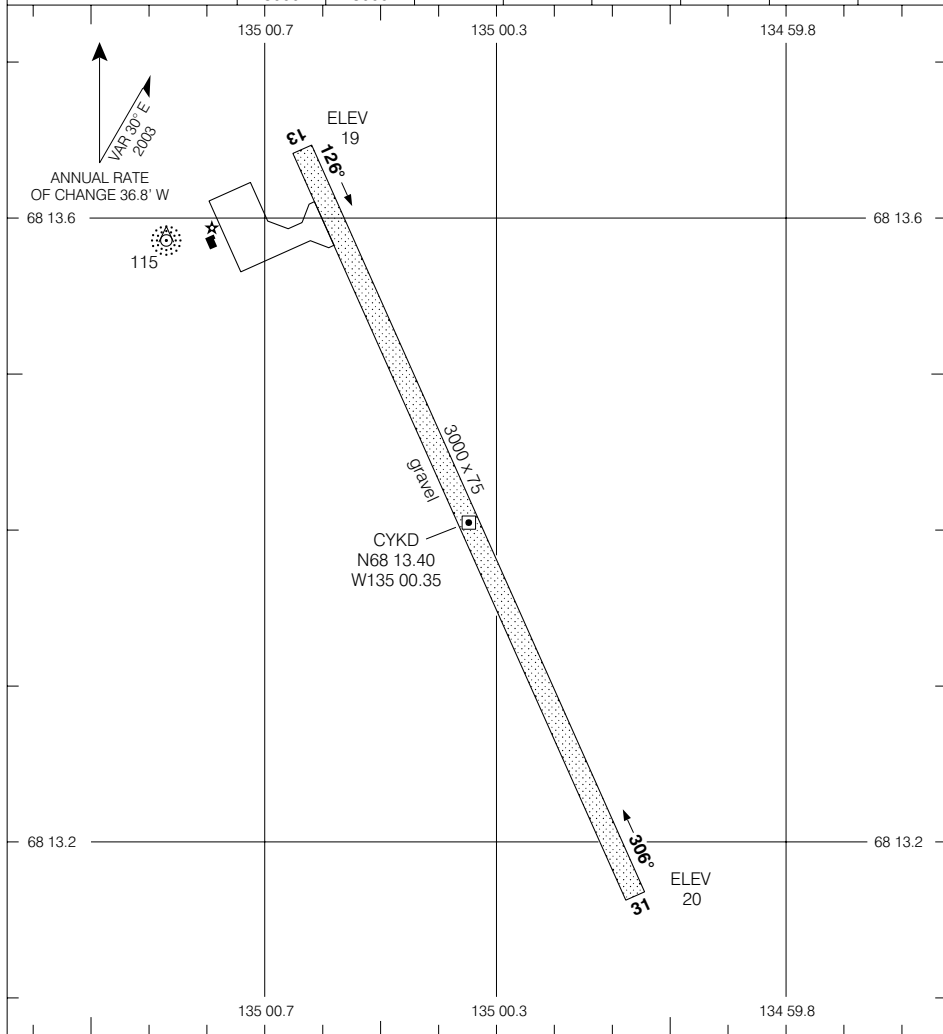
Geomatics Canada

AKLAVIK
AKLAVIK NT

APRT RADIO
122.1 (MF 5 NM)
O/T TFC 122.1

DECLARED DISTANCES

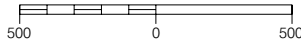
	13	31					
TORA	3000	3000					
TODA	3200	3200					
ASDA	3000	3000					
LDA	3000	3000					



TAKE-OFF MINIMA

Rwys 13, 31: ½

SCALE IN FEET



AERODROME CHART

EFF 22 DEC 05

CHANGE: Editorial

AKLAVIK NT
AKLAVIK
NAD83

© 2005 Her Majesty The Queen in Right of Canada, Department of Natural Resources

Source of Canadian Civil Aeronautical Data © 2005 NAV CANADA