

RNAV(GNSS) RWY 08 TRUE

SACHS HARBOUR
SACHS HARBOUR NT

APRT RADIO
122.1 (MF 5 NM)
O/T TFC 122.1

ELEV **281**
TDZE **08T 281**

Altimeter setting available limited hours.

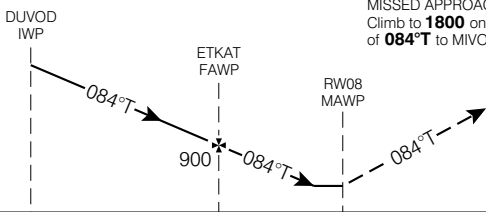
Verify runway unobstructed when A/G advisory not available.

GNSS receiver variation has to be selected to display "True" heading.

CYSY

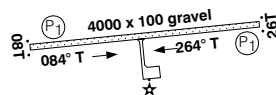


SAFE ALT 100 NM **3400**



MISSED APPROACH
Climb to **1800** on track of **084°T** to MIVOM.

ARCAL 122.1 (K)



CATEGORY	A				B		C		D	
LNAV / VNAV	NOT AUTHORIZED									
LNAV	580		(299)		1					
CIRCLING	800		(519)		1 ½		800		900	
							(519)		2 (619) 2	

Knots	70	90	110	130	150
Min:Sec					

RNAV(GNSS) RWY 08 TRUE

N71 59 38 W125 14 33 VAR 42° E (1997)

SACHS HARBOUR NT
SACHS HARBOUR

EFF 13 APR 06 CHANGE: GPS to GNSS

NAD83



Geomatics Canada

SACHS HARBOUR
SACHS HARBOUR NT

NDB RWY 08 TRUE

APRT RADIO
122.1 (MF 5 NM)
O/T TFC 122.1

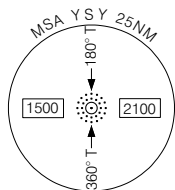
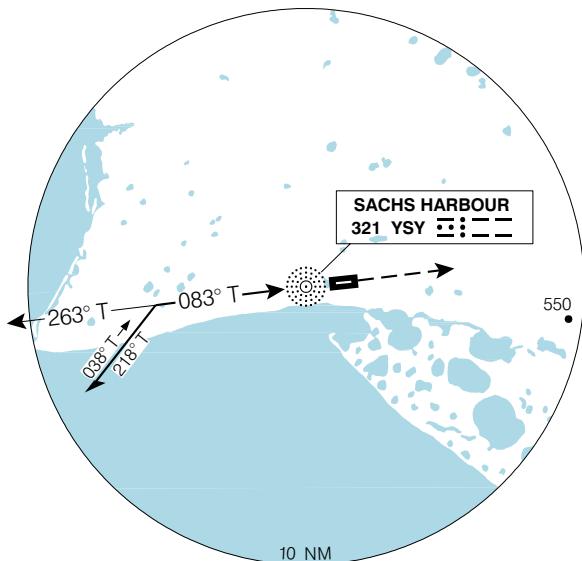
ELEV 281

TDZE 08T 281

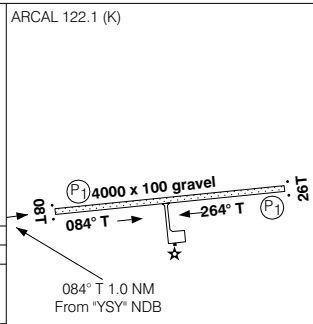
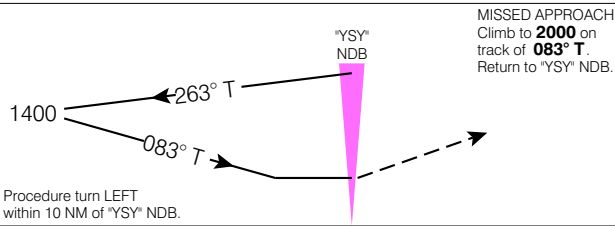
Altimeter setting
avbl ltd hrs.

CYSY

Verify runway unobstructed when
A/G advisory not available.



SAFE ALT 100 NM **3400**



CATEGORY	A	B	C	D
NDB	680	(399)	1 ¼	
CIRCLING	800	(519) 1 ¾	800	900
			(519) 2	(619) 2

"YSY" NDB to MAP 1.0 NM					
Knots	70	90	110	130	150
Min:Sec					

NDB RWY 08 TRUE

N71 59 38 W125 14 33

VAR 35° E

SACHS HARBOUR NT
SACHS HARBOUR

EFF 22 DEC 05

CHANGE: Lighting

NAD83 ♦



Geomatics Canada

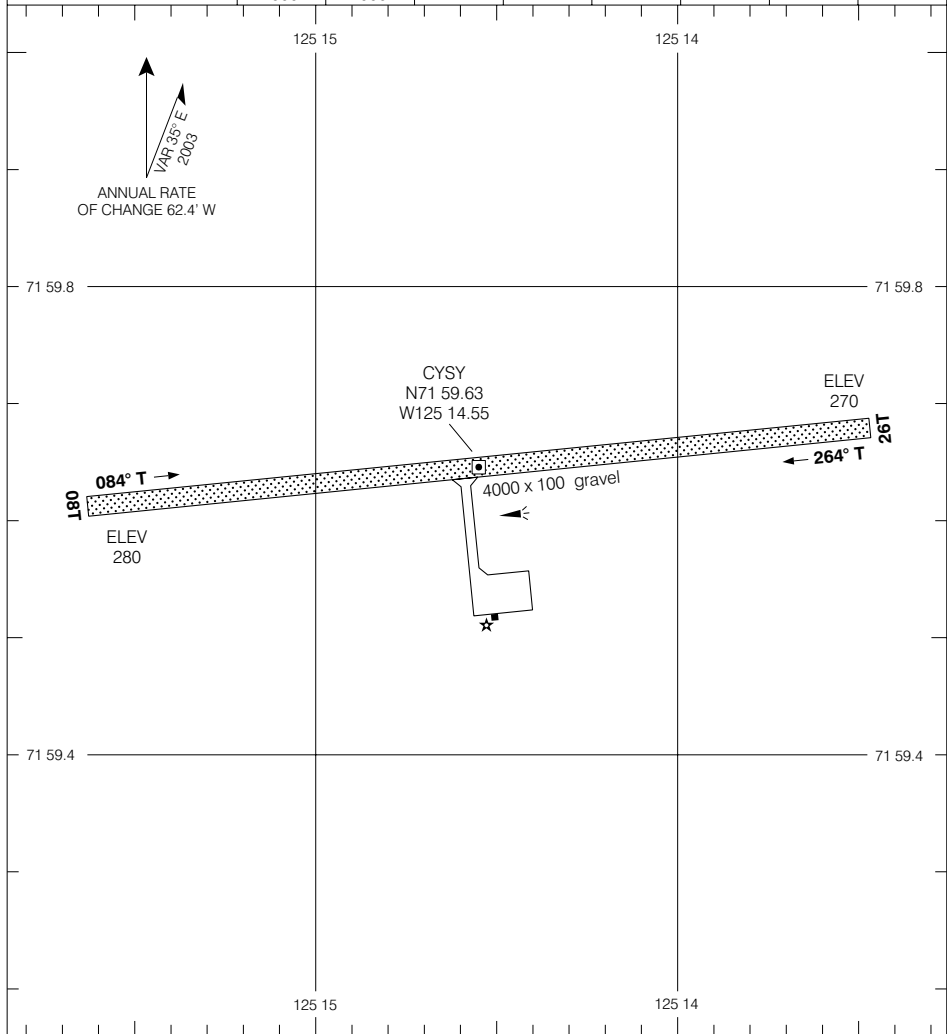
SACHS HARBOUR
SACHS HARBOUR NT

AERODROME CHART

APRT RADIO
122.1 (MF 5 NM)
O/T TFC 122.1

DECLARED DISTANCES

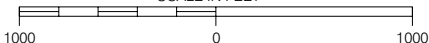
	08T	26T						
TORA	4000	4000						
TODA	4000	4000						
ASDA	4000	4000						
LDA	4000	4000						



TAKE-OFF MINIMA

Rwys 08T; 26T: ½

SCALE IN FEET



AERODROME CHART

EFF 22 DEC 05

CHANGE: Editorial

SACHS HARBOUR NT
SACHS HARBOUR

NAD83

© 2005 Her Majesty The Queen in Right of Canada, Department of Natural Resources

Source of Canadian Civil Aeronautical Data © 2005 NAV CANADA