

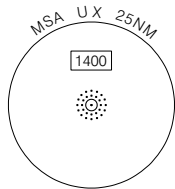
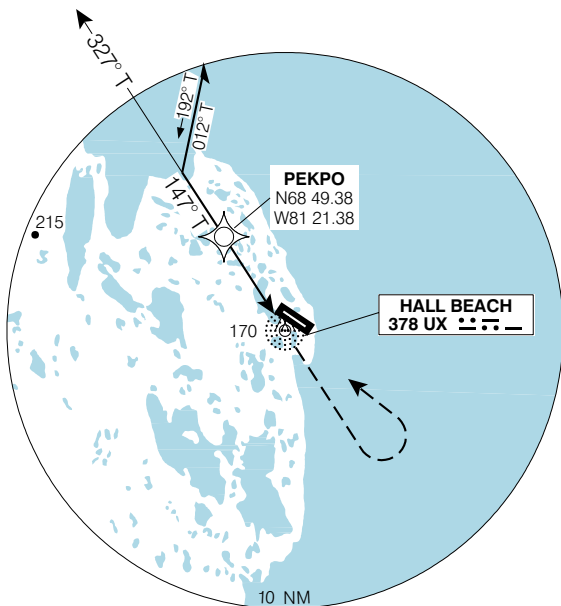
NDB RWY 12 TRUE (GNSS)

HALL BEACH
HALL BEACH NU

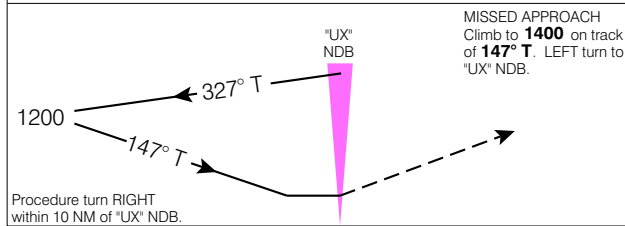
NO CTL - BCST INTENTIONS ON 126.7 WITHIN 15 MINS OF ETA AND PRIOR TO DESCENT, THEN ON MF 5 MIN PRIOR TO COMMENCING APCH.	AWOS 128.7	APRT RADIO 122.2 (MF 5 NM) O/T TFC 122.2	ELEV 27
			TDZE 12T 27

Verify runway unobstructed when A/G advisory not available

CYUX



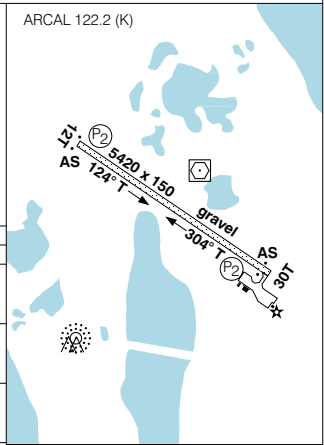
SAFE ALT 100 NM **3600**



MISSED APPROACH
Climb to **1400** on track of **147° T**. LEFT turn to "UX" NDB.

Procedure turn RIGHT within 10 NM of "UX" NDB.

ARCAL 122.2 (K)



CATEGORY	A	B	C	D
NDB	520	(493)	1 ½	
CIRCLING	540	(513) 1 ½	540 (513) 2	640 (613) 2

Knots	70	90	110	130	150
Min:Sec					

NDB RWY 12 TRUE (GNSS)

N68 46 34 W81 14 37

VAR 36° W

HALL BEACH NU
HALL BEACH
NAD83

EFF 13 APR 06 CHANGE: GPS to GNSS

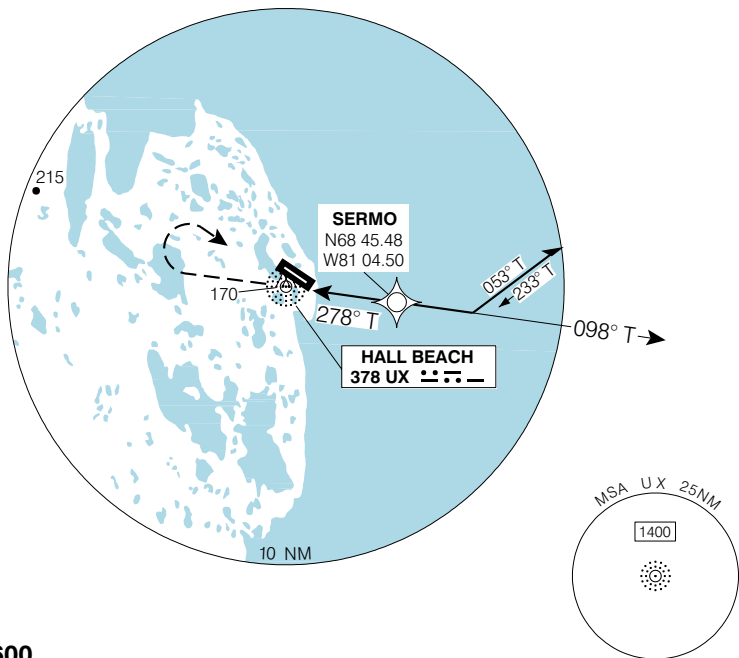
NDB RWY 30 TRUE (GNSS)

HALL BEACH
HALL BEACH NU

NO CTL - BCST INTENTIONS ON 126.7 WITHIN 15 MINS OF ETA AND PRIOR TO DESCENT, THEN ON MF 5 MIN PRIOR TO COMMENCING APCH.	AWOS 128.7	APRT RADIO 122.2 (MF 5 NM) O/T TFC 122.2	ELEV 27
			TDZE 30T 18

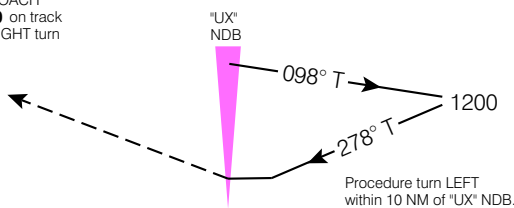
Verify runway unobstructed when A/G advisory not available

CYUX

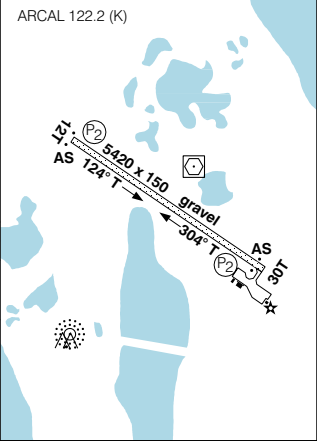


SAFE ALT 100 NM **3600**

MISSED APPROACH
Climb to **1400** on track of **278° T**. RIGHT turn to "UX" NDB.



ARCAL 122.2 (K)



CATEGORY	A	B	C	D
NDB	520	(502)	1 ½	
CIRCLING	540	(513) 1 ½	540 (513) 2	640 (613) 2

Knots	70	90	110	130	150
Min:Sec					

NDB RWY 30 TRUE (GNSS)

N68 46 34 W81 14 37

VAR 36° W

HALL BEACH NU
HALL BEACH

EFF 13 APR 06 CHANGE: GPS to GNSS

NAD83

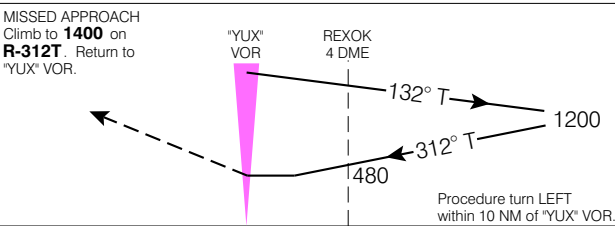
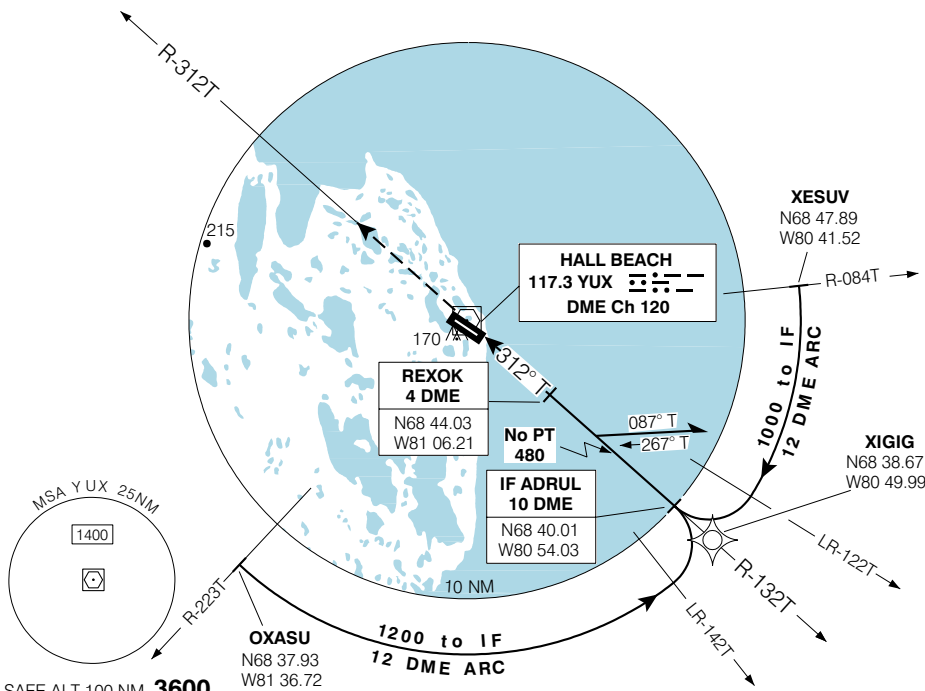
VOR/DME or VOR RWY 30 TRUE (GNSS)

HALL BEACH
HALL BEACH NU

<p>NO CTL - BCST INTENTIONS ON 126.7 WITHIN 15 MINS OF ETA AND PRIOR TO DESCENT, THEN ON MF 5 MIN PRIOR TO COMMENCING APCH.</p>	<p>AWOS 128.7</p>	<p>APRT RADIO 122.2 (MF 5 NM) O/T TFC 122.2</p>	<p>ELEV 27</p>
	<p>TDZE 30T 18</p>		

Verify runway unobstructed when A/G advisory not available

CYUX



CATEGORY	A	B	C	D
VOR/DME	420	(402)	1 ½	
VOR	480	(462)	1 ½	
CIRCLING	540	(513) 1 ½	540 (513) 2	640 (613) 2

Knots	70	90	110	130	150
Min:Sec					

VOR/DME or VOR RWY 30 TRUE (GNSS)

N68 46 34 W81 14 37 VAR 36° W

HALL BEACH NU
HALL BEACH

EFF 13 APR 06

CHANGE: GPS to GNSS

NAD83

© 2006 Her Majesty The Queen in Right of Canada, Department of Natural Resources. All rights reserved. Source of Canadian Civil Aeronautical Data: © 2006 NAV CANADA. All rights reserved.



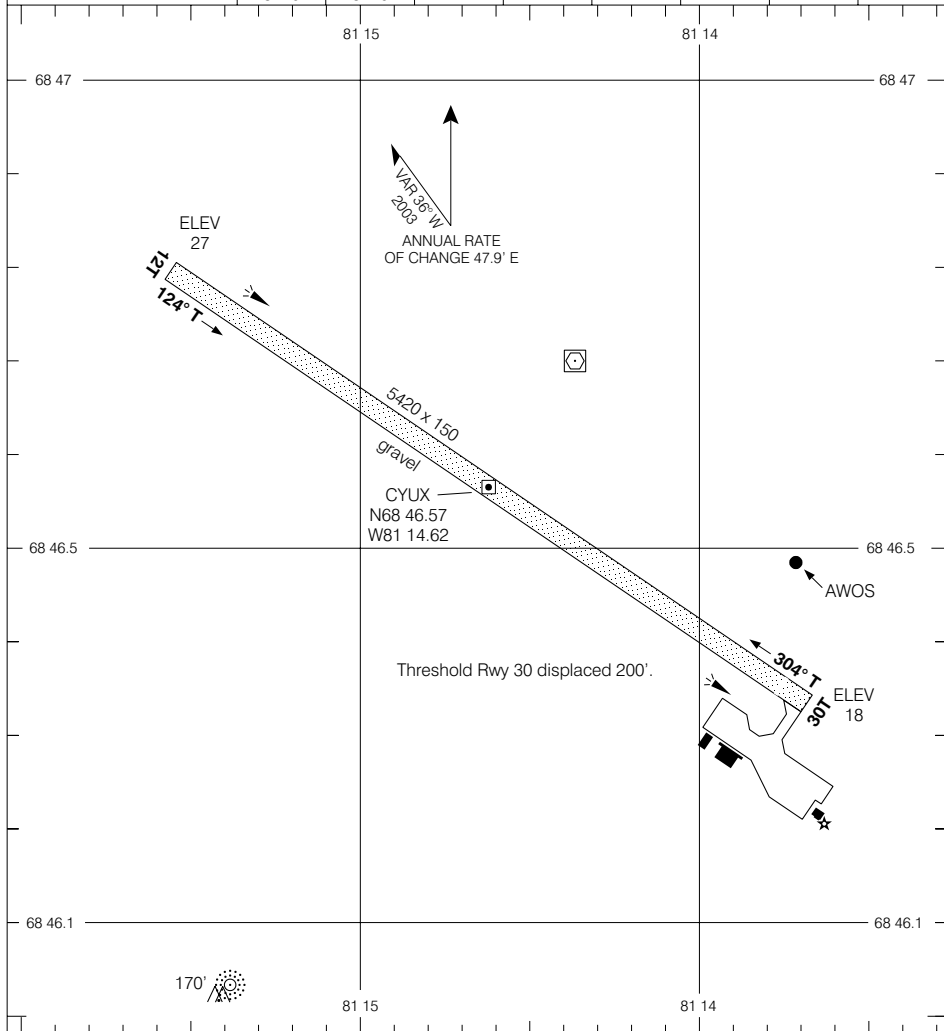
Geomatics Canada

HALL BEACH
HALL BEACH NU

AERODROME CHART

<p>AWOS 128.7</p>	<p>APRT RADIO 122.2 (MF 5 NM) O/T TFC 122.2</p>
-------------------------------------	--

DECLARED DISTANCES	12T	30T						
TORA	5420	5420						
TODA	5620	6420						
ASDA	5420	5420						
LDA	5420	5220						



<p>TAKE-OFF MINIMA</p> <p>Rwys 12T; 30T: ½</p>	<p>SCALE IN FEET</p> <p>1000 0 1000 2000</p>
--	--

© 2005 Her Majesty The Queen in Right of Canada, Department of Natural Resources
Source of Canadian Civil Aeronautical Data © 2005 NAV CANADA