

LUPIN
LUPIN NU

RNAV (GNSS) RWY 01 TRUE

| | | | |
|--|--|---|--|
| PAL EDMONTON CENTRE 134.2 | ARR/DEP YELLOWKNIFE RADIO (RCO) 123.275 | UNICOM 122.8 (ATF 25 NM) O/T TFC 122.8 | ELEV 1608 TDZE 01T 1608 |
|--|--|---|--|

© 2006 Her Majesty The Queen in Right of Canada, Department of Natural Resources. All rights reserved

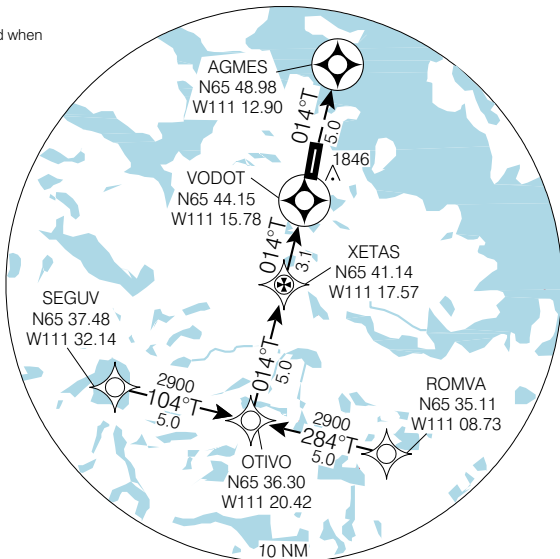
Altimeter setting
avbl ltd hrs.

Caution: Higher terrain
on approach to Rwy 01T
resulting in 2.5% downslope
to threshold.

Verify runway unobstructed when
A/G advisory not available.

Ensure GNSS receiver
variation selected to
display 'true' heading.

CYWO

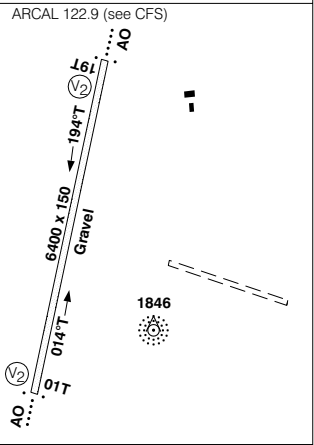


SAFE ALT 100 NM **3200**

Source of Canadian Civil Aeronautical Data: © 2006 NAV CANADA. All rights reserved

MISSED APPROACH
Climb to **3100** on track
of **014°T** to AGMES.

| | | | | | | | | | | |
|-------------|----------------|--|-------|--|-----|--|-------------|--|-------------|--|
| CATEGORY | A | | | | B | | C | | D | |
| LNAV / VNAV | NOT AUTHORIZED | | | | | | | | | |
| LNAV | 2120 | | (512) | | 1 ½ | | | | | |
| CIRCLING | 2160 | | (552) | | 1¼ | | 2160 | | 2220 | |
| | | | | | | | (552) | | 2 | |
| | | | | | | | (612) | | 2 | |



| | | | | | |
|---------|----|----|-----|-----|-----|
| Knots | 70 | 90 | 110 | 130 | 150 |
| Min:Sec | | | | | |

RNAV (GNSS) RWY 01 TRUE

EFF 13 APR 06 CHANGE: GPS to GNSS; comm box

N65 45 33 W111 15 00

VAR 27° E
(1996)

LUPIN NU
LUPIN
NAD83

RNAV (GNSS) RWY 19 TRUE

LUPIN
LUPIN NU

| | | | |
|--|--|---|------------------------------------|
| PAL EDMONTON CENTRE 134.2 | ARR/DEP YELLOWKNIFE RADIO (RCO) 123.275 | UNICOM 122.8 (ATF 25 NM) O/T TFC 122.8 | ELEV 1608 TDZE 19T 1601 |
|--|--|---|------------------------------------|

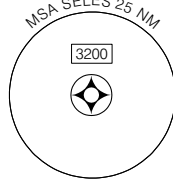
© 2006 Her Majesty The Queen in Right of Canada, Department of Natural Resources. All rights reserved

Altimeter setting
avbl ltd hrs.

Verify runway unobstructed when
A/G advisory not available.

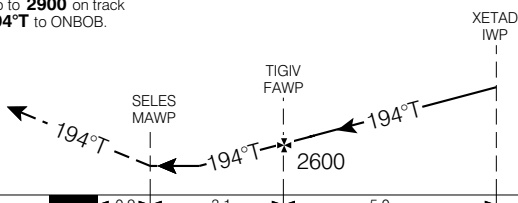
Ensure GNSS receiver
variation selected to
display "true" heading.

CYWO

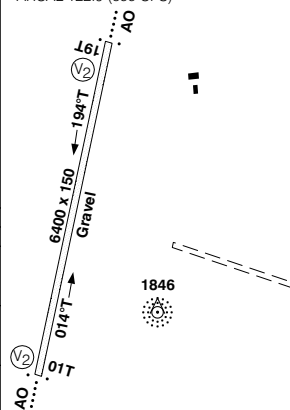


SAFE ALT 100 NM **3200**

MISSED APPROACH
Climb to **2900** on track
of **194°T** to ONBOB.



ARCAL 122.9 (see CFS)



Source of Canadian Civil Aeronautical Data: © 2006 NAV CANADA. All rights reserved

| | | | | | | | | | | |
|-------------|----------------|--|-------|--|-----|--|-------------|--|-------------|--|
| CATEGORY | A | | | | B | | C | | D | |
| LNAV / VNAV | NOT AUTHORIZED | | | | | | | | | |
| LNAV | 2120 | | (519) | | 1 ½ | | | | | |
| CIRCLING | 2160 | | (552) | | 1¼ | | 2160 | | 2220 | |
| | | | | | | | (552) | | 2 (612) 2 | |

| | | | | | |
|---------|----|----|-----|-----|-----|
| Knots | 70 | 90 | 110 | 130 | 150 |
| Min:Sec | | | | | |

RNAV (GNSS) RWY 19 TRUE

N65 45 33 W111 15 00

VAR 27°E
(1996)

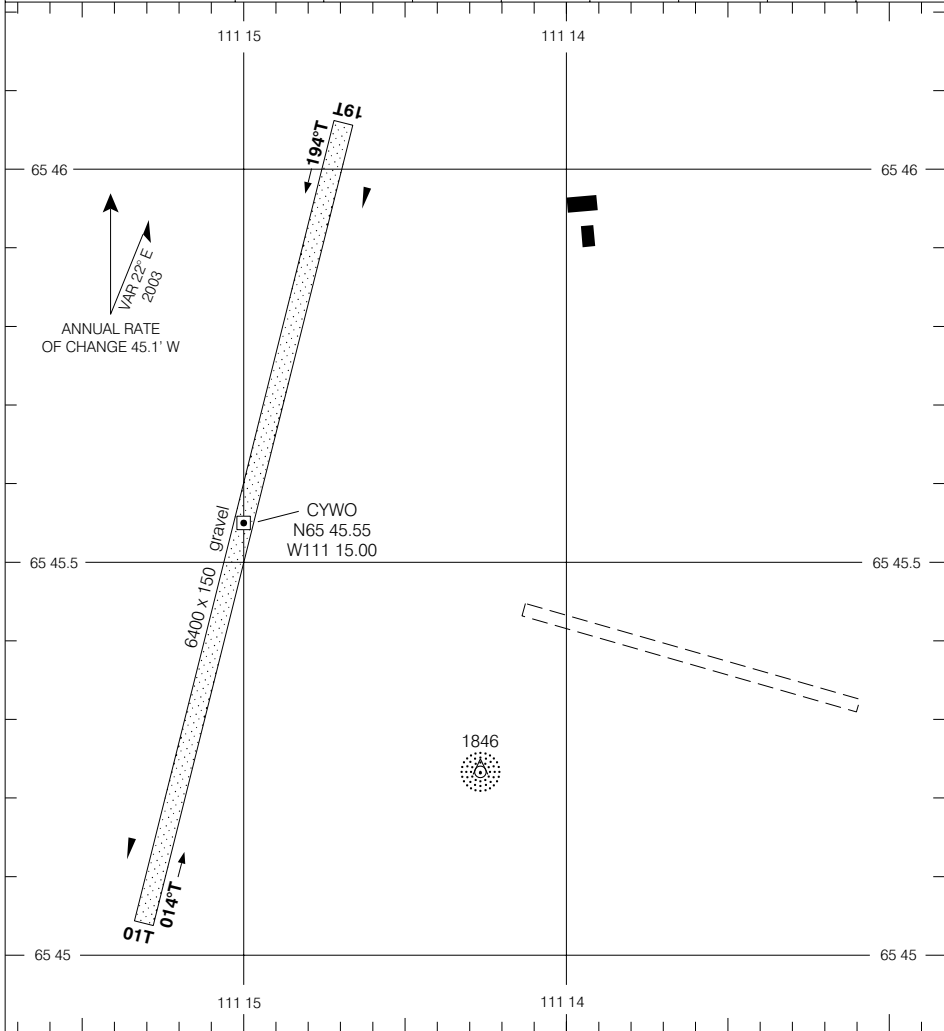
LUPIN NU
LUPIN
NAD83

LUPIN
LUPIN NU

AERODROME CHART

| | | |
|--|---|--|
| PAL EDMONTON CENTRE 134.2 | UNICOM 122.8 (ATF 25 NM) O/T TFC 122.8 | DEP YELLOWKNIFE RADIO (RCO) 123.275 |
|--|---|--|

| DECLARED DISTANCES | 01T | 19T | | | | | |
|--------------------|-------|-------|-------|--|--|--|--|
| | TORA | _____ | _____ | | | | |
| TODA | _____ | _____ | | | | | |
| ASDA | _____ | _____ | | | | | |
| LDA | _____ | _____ | | | | | |



| | |
|------------------|------------------|
| TAKE-OFF MINIMA | SCALE IN FEET |
| Rwys 01T, 19T: ½ | 1000 0 1000 2000 |

AERODROME CHART
EFF 13 APR 06

CHANGE: DEP frequency

LUPIN NU
LUPIN
NAD83

© 2006 Her Majesty The Queen in Right of Canada, Department of Natural Resources. All rights reserved. Source of Canadian Civil Aeronautical Data: © 2006 NAV CANADA. All rights reserved.