

RNAV(GNSS) RWY 29

FORT McPHERSON
FORT McPHERSON NT

NO CTL-BCST INTENTIONS ON 126.7 WITHIN 15 MIN OF ETA AND PRIOR TO DESCENT, THEN ON MF 5 MIN PRIOR TO COMMENCING APCH

APRT RADIO 122.1 (MF 5 NM) O/T TFC 122.1

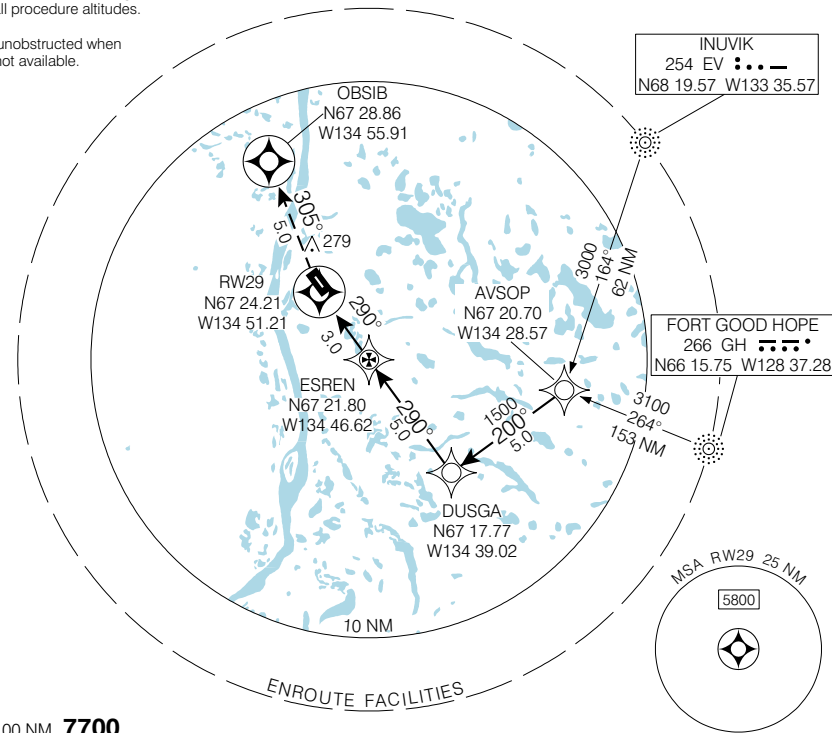
ELEV 116 TDZE 29 116

© 2006 Her Majesty The Queen in Right of Canada, Department of Natural Resources. All rights reserved

When using Inuvik altimeter setting, add **160'** to all procedure altitudes.

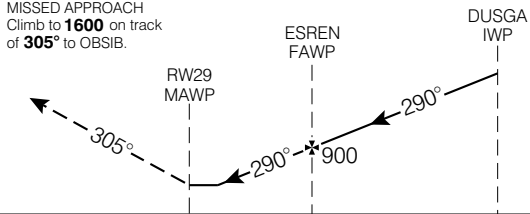
CZFM

Verify runway unobstructed when A/G advisory not available.

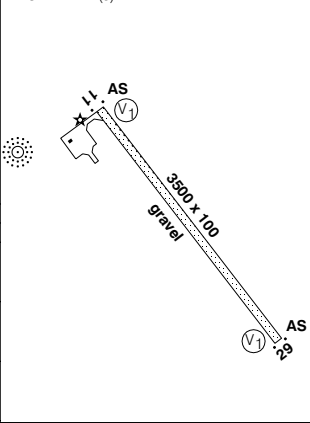


SAFE ALT 100 NM **7700**

MISSED APPROACH
Climb to **1600** on track of **305°** to OBSIB.



ARCAL 122.1 (J)



CATEGORY	A	B	C	D
LNAV / VNAV	NOT AUTHORIZED			
LNAV	640	(524)	1 ¾	
CIRCLING	660	(544) 1 ¾	660	760
			(544) 2	(644) 2

Knots	70	90	110	130	150
Min:Sec					

RNAV(GNSS) RWY 29

N67 24 27 W134 51 38

VAR 34° E (1996)

FORT McPHERSON NT

EFF 13 APR 06 CHANGE: GPS to GNSS

FORT McPHERSON

NAD83

Source of Canadian Civil Aeronautical Data: © 2006 NAV CANADA. All rights reserved



Geomatics Canada

FORT McPHERSON
FORT McPHERSON NT

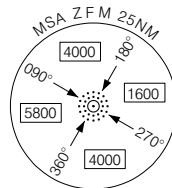
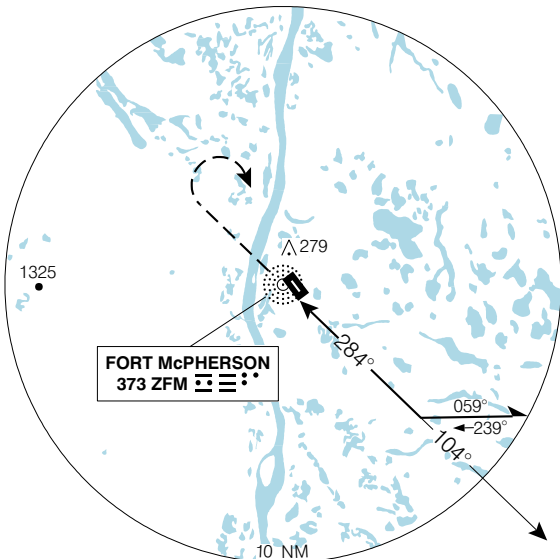
NDB RWY 29

NO CTL - BCST INTENTIONS ON 126.7 WITHIN 15 MIN OF ETA AND PRIOR TO DESCENT, THEN ON MF 5 MIN PRIOR TO COMMENCING APCH	APRT RDO 122.1 (MF 5 NM) O/T TFC 122.1	ELEV 116
		TDZE 29 116

When using Inuvik altimeter setting, add **160'** to all procedure altitudes.

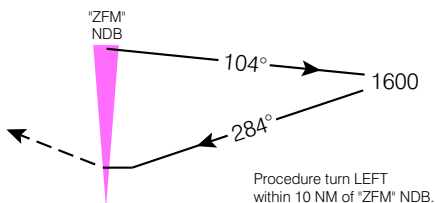
CZFM

Verify rwy unobstructed when A/G advisory not available.

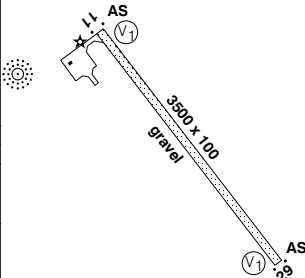


SAFE ALT 100 NM **7700**

MISSED APPROACH
Climb to **1600** on track of **284°**. RIGHT turn to 'ZFM' NDB.



ARCAL 122.1 (J)



CATEGORY	A	B	C	D
NDB	700	(584)	1¼	NOT AUTHORIZED
CIRCLING	700	(584)	1¼	700 (584) 2

Knots	70	90	110	130	150
Min:Sec					

NDB RWY 29

EFF 7 JUL 05

CHANGE: Revised

N67 24 27 W134 51 38

VAR 30° E

FORT McPHERSON NT
FORT McPHERSON

NAD83



Geomatics Canada

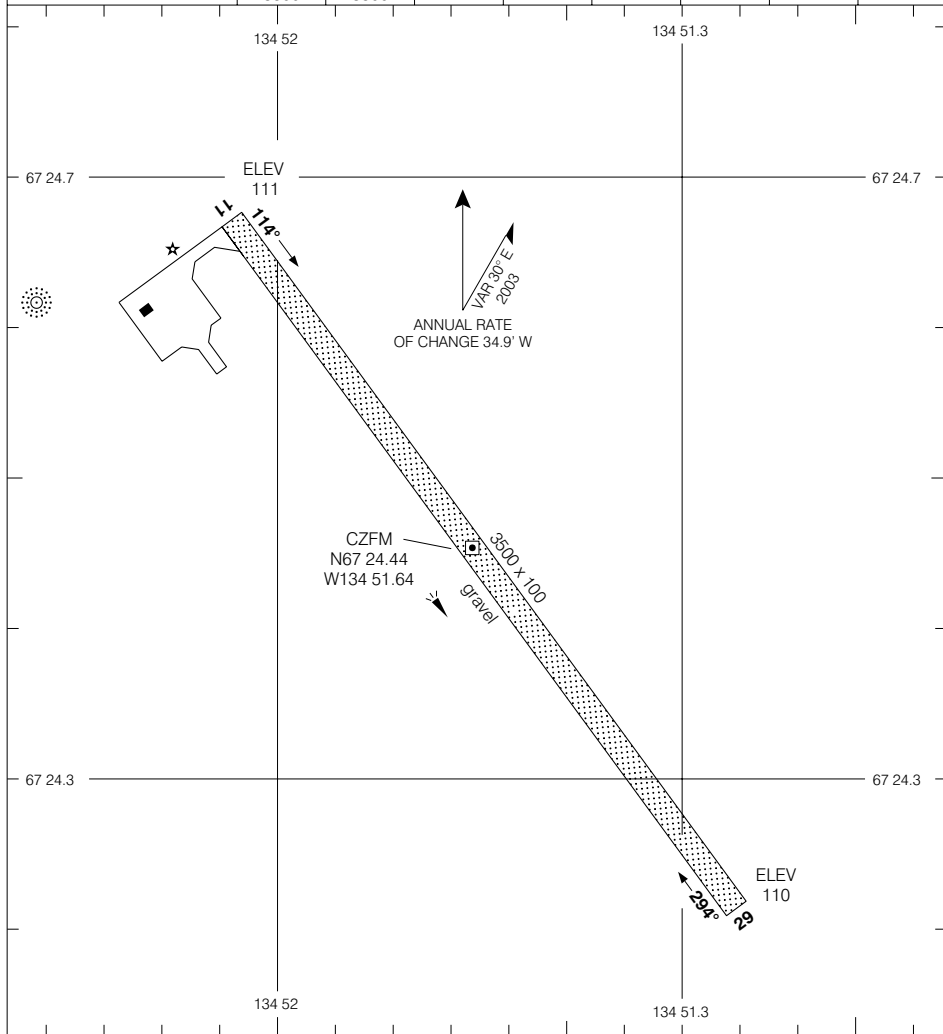
FORT McPHERSON
FORT McPHERSON NT

AERODROME CHART

APRT RDO
122.1 (MF 5 NM)
O/T TFC 122.1

DECLARED DISTANCES

	11	29					
TORA	3500	3500					
TODA	4090	4500					
ASDA	3500	3500					
LDA	3500	3500					



TAKE-OFF MINIMA

Rwys 11; 29: ½

SCALE IN FEET



AERODROME CHART

EFF 22 DEC 05

CHANGE: Editorial

FORT McPHERSON NT
FORT McPHERSON

NAD83

© 2005 Her Majesty The Queen in Right of Canada, Department of Natural Resources

Source of Canadian Civil Aeronautical Data © 2005 NAV CANADA