

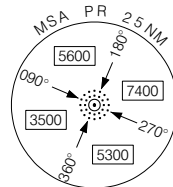
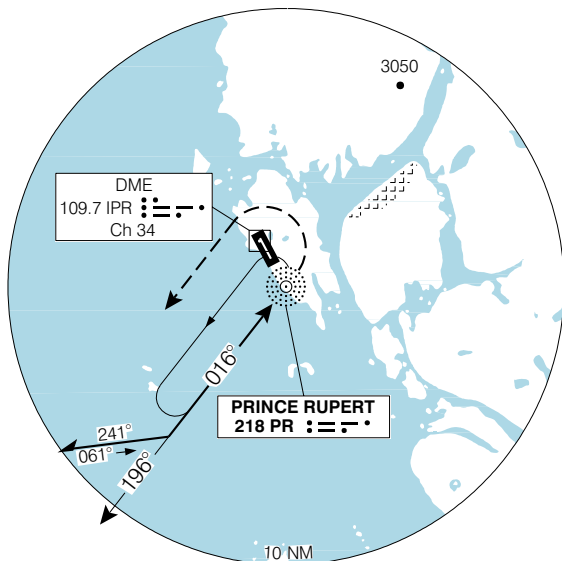
**NDB A**

**PRINCE RUPERT**  
PRINCE RUPERT BC

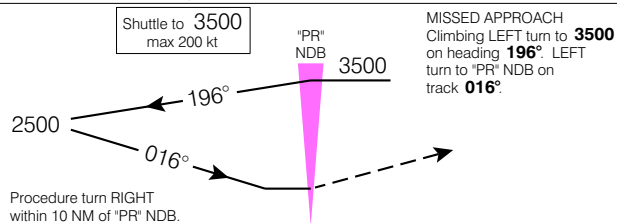
<b>ARR/DEP</b> <b>VANCOUVER CENTRE</b> 128.0 284.0	<b>RADIO RUPERT</b> <b>O/T TERRACE RDO (RCO)</b> 122.5 (MF)	<b>ELEV 116</b>
--	---	-----------------

MAP located 1 NM EAST of airport.

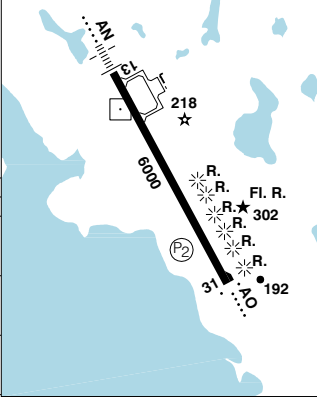
CYPR



SAFE ALT 100 NM **11,100**



Right hand circuits Rwy 13.  
ARCAL 122.5 (K) (see CFS)



CATEGORY	A	B	C	D
CIRCLING	<b>1000</b>	(884)	3	

Knots	70	90	110	130	150
Min:Sec					

**NDB A** N54 17 10 W130 26 41 VAR 22° E

**PRINCE RUPERT BC**  
**PRINCE RUPERT**  
NAD83

EFF 13 APR 06

CHANGE: Editorial

© 2006 Her Majesty The Queen in Right of Canada, Department of Natural Resources. All rights reserved

Source of Canadian Civil Aeronautical Data: © 2006 NAV CANADA. All rights reserved

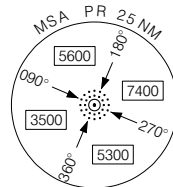
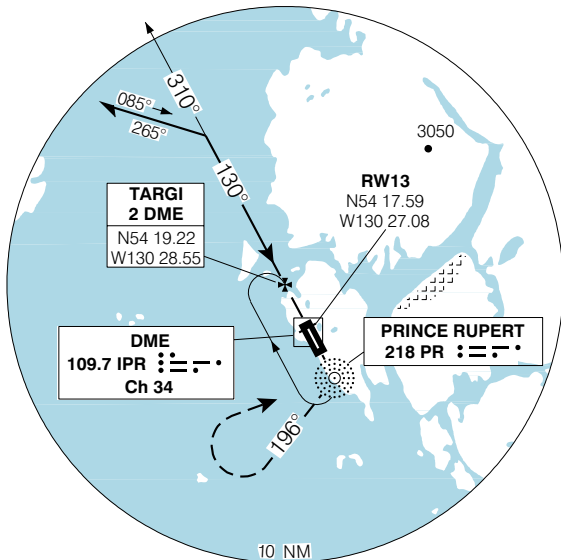
**NDB/DME RWY 13 (GNSS)**

**PRINCE RUPERT**  
PRINCE RUPERT BC

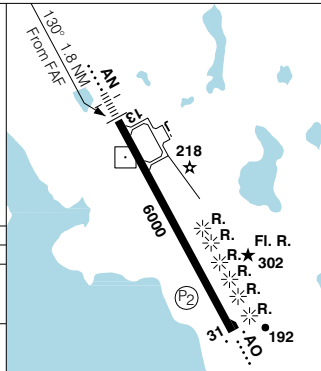
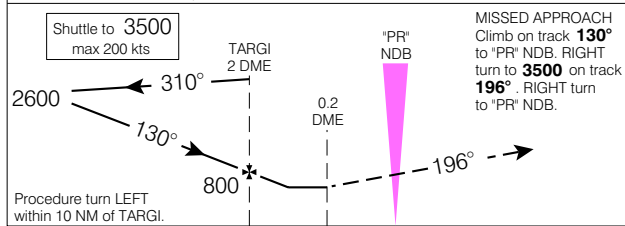
<b>ARR/DEP VANCOUVER CENTRE</b> 128.0 284.0	<b>RADIO RUPERT</b> O/T TERRACE RDO (RCO) 122.5 (MF)	<b>ELEV 116</b> <b>TDZE 13 99</b>
--	--	--------------------------------------

3500 from "PR" NDB  
to TARGI 310° 3.8 NM

CYPR



SAFE ALT 100 NM **11,100**



Shuttle to 3500 max 200 kts	TARGI 2 DME	"PR" NDB	MISSED APPROACH Climb on track <b>130°</b> to "PR" NDB. RIGHT turn to <b>3500</b> on track <b>196°</b> . RIGHT turn to "PR" NDB.						
Procedure turn LEFT within 10 NM of TARGI.	0.2 DME	1.8							
CATEGORY	A	B	C	D					
NDB/DME	<b>700</b>		(601)	1 ¼					
* CIRCLING	<b>700</b>	(584)	1 ¼	<b>700</b>	(584)	2	<b>720</b>	(604)	2

Right hand circuits Rwy 13  
ARCAL 122.5 (K) (see CFS)  
Rwy 13 up 0.4% (last 2700' up 0.6%)

Knots				
Min:Sec				

**NDB/DME RWY 13 (GNSS)** N54 17 10 W130 26 41 VAR 22° E  
EFF 13 APR 06 CHANGE: GPS to GNSS

**PRINCE RUPERT BC**  
**PRINCE RUPERT**  
NAD83

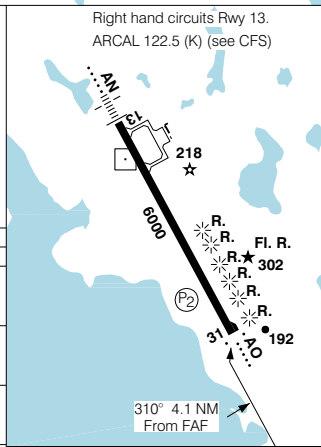
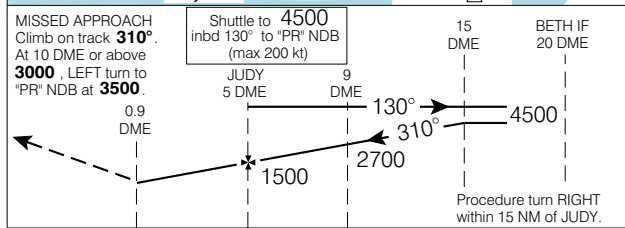
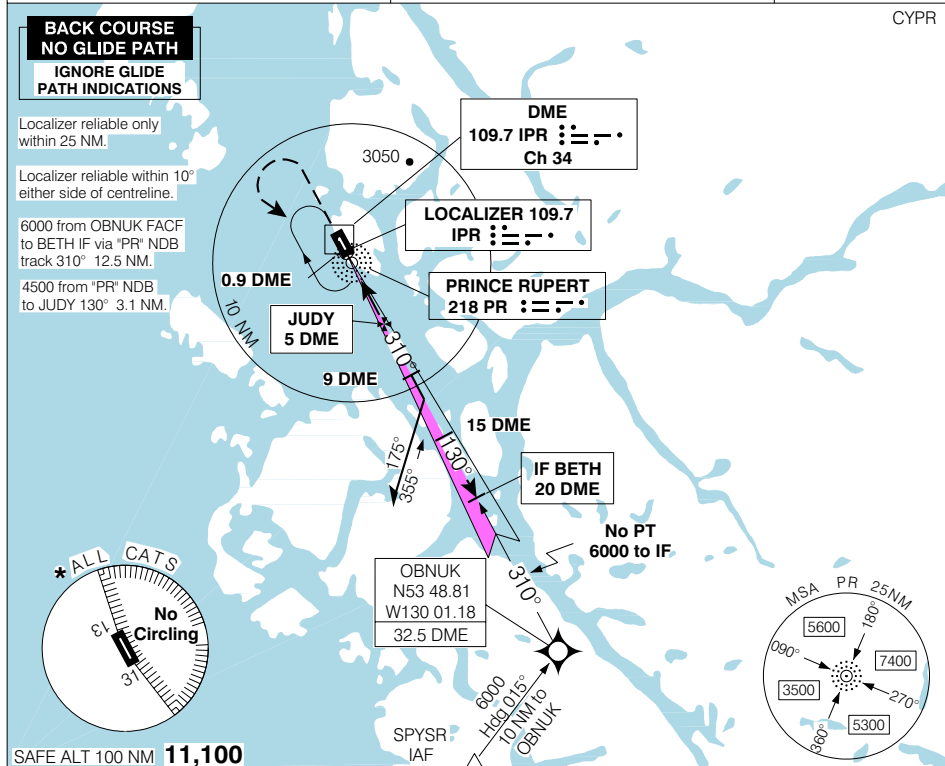
# LOC(BC)/DME RWY 31

PRINCE RUPERT  
PRINCE RUPERT BC

ARR/DEP <b>VANCOUVER CENTRE</b> 128.0 284.0	<b>RADIO RUPERT</b> O/T TERRACE RDO (RCO) 122.5 (MF)	<b>ELEV 116</b> <b>TDZE 31 116</b>
---	--	---------------------------------------

© 2006 Her Majesty The Queen in Right of Canada, Department of Natural Resources. All rights reserved

Source of Canadian Civil Aeronautical Data: © 2006 NAV CANADA. All rights reserved



CATEGORY	A	B	C	D
LOC(BC)/DME	<b>560</b> (444)		1 ½	
* CIRCLING	<b>620</b> (504) 1 ½		<b>620</b> (504) 2	<b>720</b> (604) 2

Knots	70	90	110	130	150
Min:Sec					

# LOC(BC)/DME RWY 31

EFF 13 APR 06 CHANGE: Editorial

N54 17 10 W130 26 41  
VAR 22° E

PRINCE RUPERT BC  
PRINCE RUPERT  
NAD83

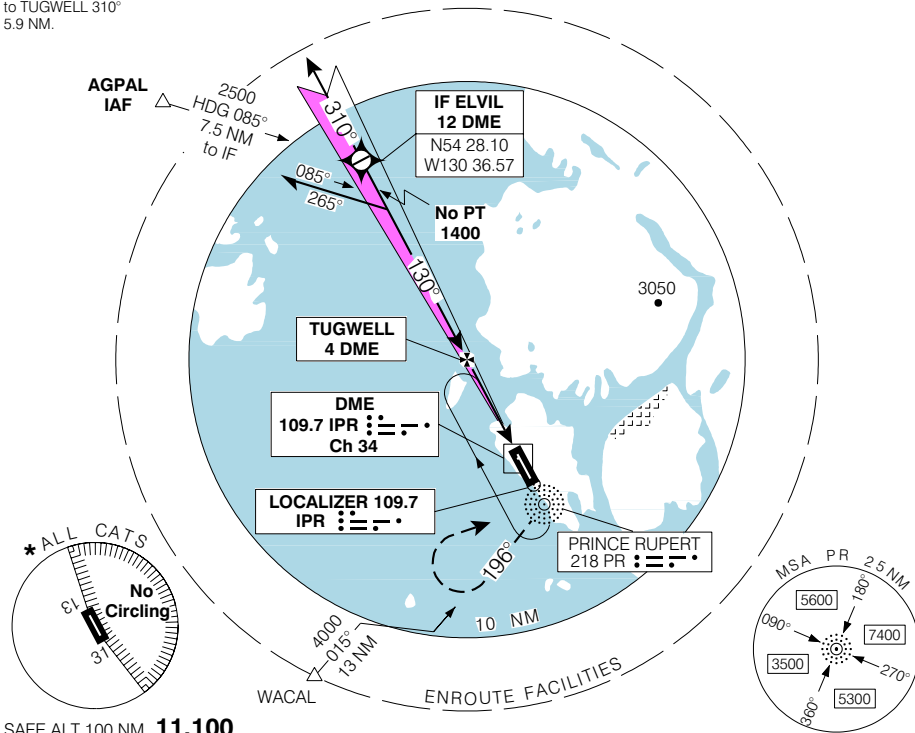
# ILS/DME RWY 13

PRINCE RUPERT  
PRINCE RUPERT BC

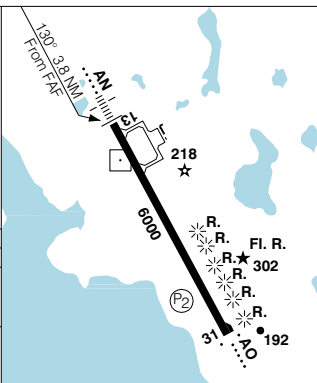
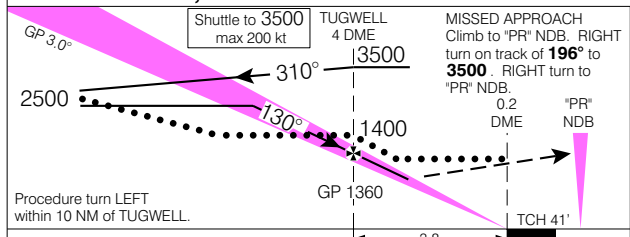
ARR/DEP <b>VANCOUVER CENTRE</b> 128.0 284.0	RADIO RUPERT O/T TERRACE RDO (RCO) 122.5 (MF)	ELEV <b>116</b>
		TDZE <b>13 99</b>

3500 from "PR" NDB  
to TUGWELL 310°  
5.9 NM.

CYPR



SAFE ALT 100 NM **11,100**



CATEGORY	A	B	C	D
ILS/DME	<b>318</b>	(219)		½
LOC/DME	<b>480</b>	(381)		1 ¼
* CIRCLING	<b>620</b>	(504) 1 ½	<b>620</b>	<b>720</b>
			(504) 2	(604) 2

Right hand circuits Rwy 13  
ARCAL 122.5 (K) (see CFS)  
Rwy 13 up 0.4% (last 2700' up 0.6%)

FAF to MAP 3.8 NM				
Knots	70	90	110	130 150
Min:Sec	<b>3:15</b>	<b>2:32</b>	<b>2:04</b>	<b>1:45 1:31</b>

ILS/DME RWY 13  
EFF 13 APR 06 CHANGE: Editorial

N54 17 10 W130 26 41 VAR 22° E

PRINCE RUPERT BC  
PRINCE RUPERT

NAD83

