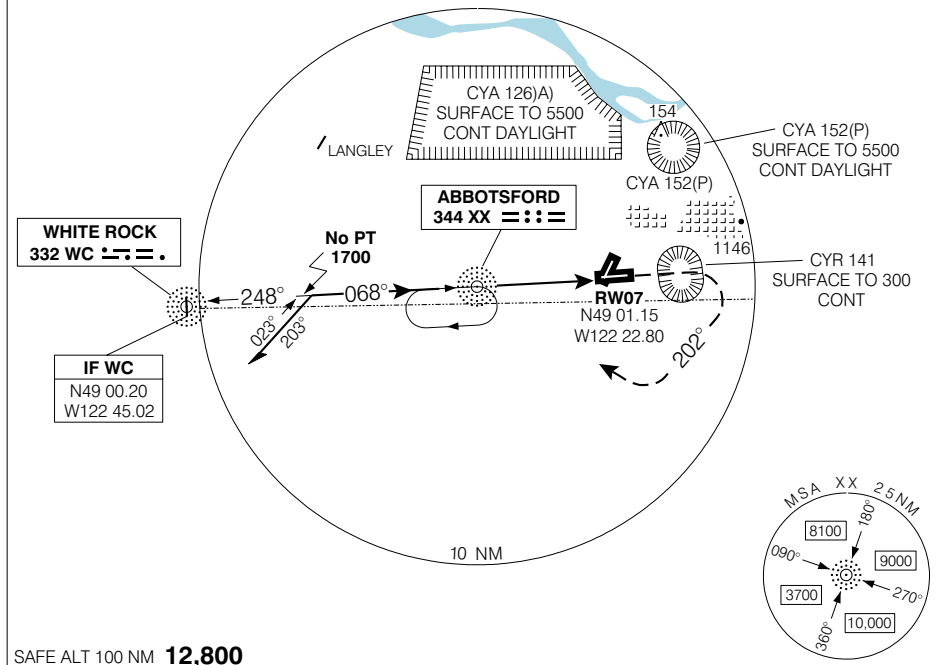


NDB RWY 07 (GNSS)

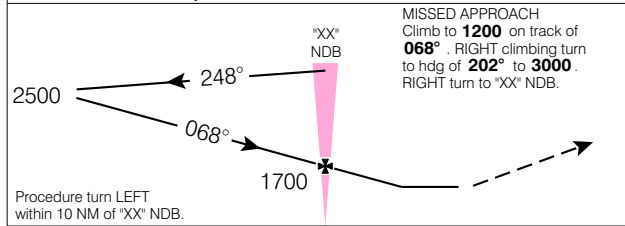
ABBOTSFORD
ABBOTSFORD BC

ATIS 119.8	ARR/DEP VICTORIA TERMINAL 132.7 290.8	TWR 121.0(OUTER) 119.4(INNER) 295.0 O/T RADIO(RCO) CRANBROOK 119.4 295.0(MF CZ)	GND 121.8	ELEV 195
				TDZE 07 174

CYXX

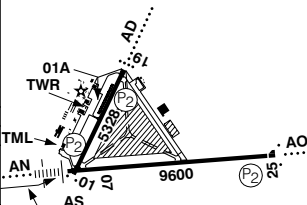


SAFE ALT 100 NM **12,800**



MISSED APPROACH
Climb to **1200** on track of **068°**. RIGHT climbing turn to hdg of **202°** to **3000**. RIGHT turn to "XX" NDB.

Right hand circuits Rwy 01 and 07
Rwys 01A; 19A 1500 x 100 turf
Rwy 25 displaced 295'
ARCAL 119.4 (K)



CATEGORY	A	B	C	D
NDB	860	(686)		1 ½
CIRCLING	860	(665)	2	940 (745) 2 ¼

"XX" NDB to MAP 4.3 NM					
Knots	70	90	110	130	150
Min:Sec	3:41	2:52	2:21	1:59	1:43

NDB RWY 07 (GNSS)

N49 01 31 W122 21 38

VAR 19° E

ABBOTSFORD BC
ABBOTSFORD
NAD83

EFF 13 APR 06

CHANGE: Revised

SID(VECTOR)

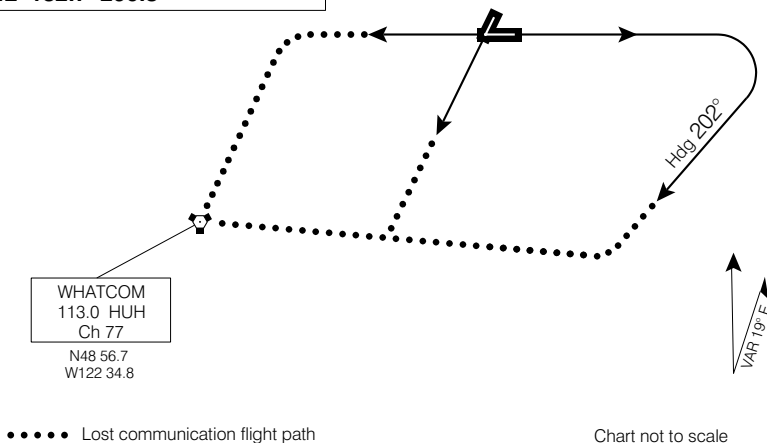
ABBOTSFORD SIX DEP

(CYXX 6.)

ABBOTSFORD
ABBOTSFORD BC

VOT 115.7
 ● ATIS 119.8
 ● GND 121.8
 ● TWR 119.4(INNER)
 121.0(OUTER) 295.0
 O/T RADIO(RCO) CRANBROOK
 119.4 295.0 (MF CZ)
 DEP VICTORIA
 TML 132.7 290.8

WHATCOM
113.0 HUH
Ch 77
N48 56.7
W122 34.8



..... Lost communication flight path

Chart not to scale

DEPARTURE ROUTE DESCRIPTION

- Runway 07:** Prior to departure, advise ATC of procedure to be flown (1 or 2).
- Category A and B** - Climbing right turn to 202° for vectors to assigned route. Contact Victoria Terminal passing 1500 ASL unless instructed otherwise by ATC. Maintain 3000 or as assigned.
 - Category C and D** - Maximum 250 kt. Requires a minimum climb gradient of 430 ft/NM to 4000. Climbing right turn to 202° for vectors to assigned route. Contact Victoria Terminal passing 1500 ASL unless instructed otherwise by ATC. Maintain 5000 or as assigned.
- Runway 19:** Climb runway heading for vectors to assigned route. Contact Victoria Terminal passing 1500 ASL unless instructed otherwise by ATC. Maintain 3000 or as assigned.
- Note: 80' trees 1700' from departure end of runway.
- Runway 25:** Requires minimum climb gradient of 240 ft/NM to 500. Climb runway heading for vectors to assigned route. Contact Victoria Terminal passing 1500 ASL unless instructed otherwise by ATC. Maintain 3000 or as assigned.
- Lost Communication:** If no radio contact with Departure Control by published/assigned altitude continue to HUH VORTAC then via filed/assigned route. Continue climb to flight planned/assigned altitude/flight level 5 minutes after departure.

Note: Refer to Noise Abatement Procedures for additional requirements.

ABBOTSFORD SIX DEP

(CYXX 6.)

ABBOTSFORD BC
ABBOTSFORD

EFF 16 FEB 06

CHANGE: Comm box

NOISE ABATEMENT PROCEDURESABBOTSFORD
ABBOTSFORD BC**RESTRICTIONS****APPLICATION**

These procedures apply to ALL JET AIRCRAFT including turbo-jets, turbo-fan jets, and fan jets.

NIGHT RESTRICTIONS

Local training flights not permitted from 2200-0700 hrs local time EXCEPT as otherwise authorized by the Airport General Manager.

NOISE ABATEMENT PROCEDURES

EFF 13 APR 06

CHANGE: Editorial

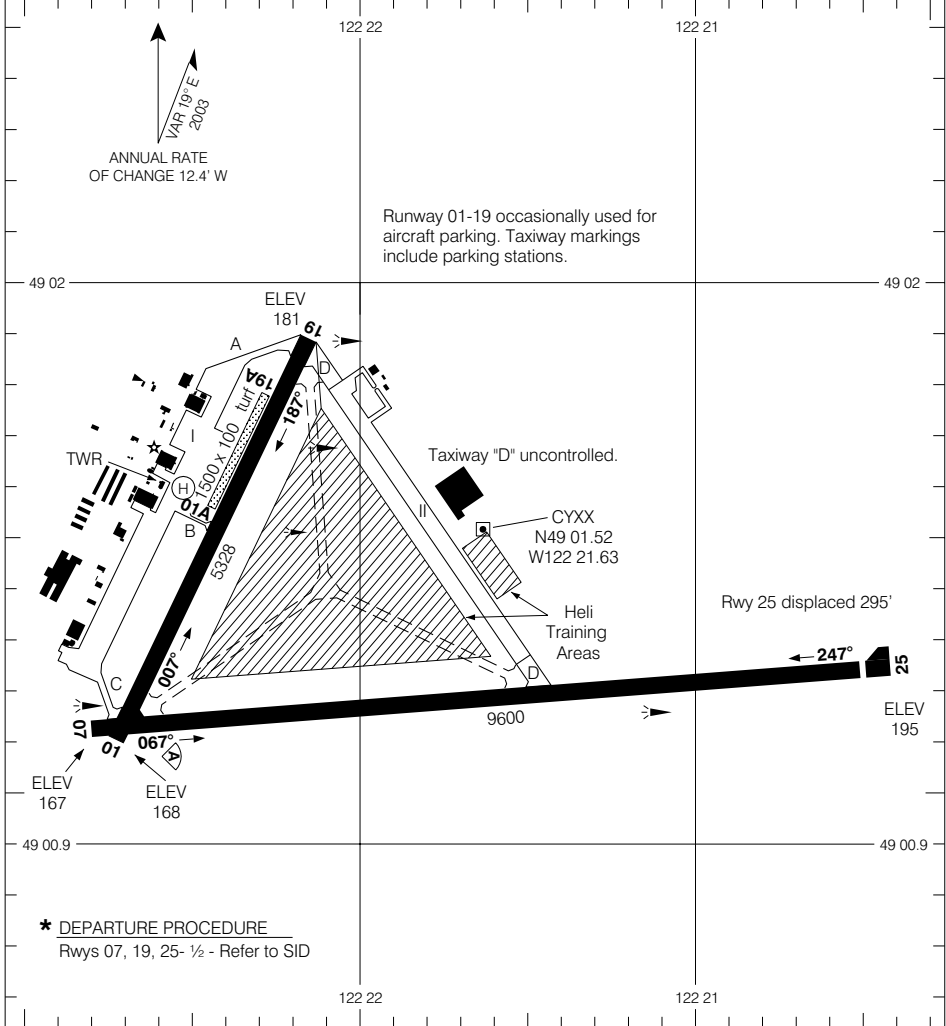
ABBOTSFORD BC
ABBOTSFORD

ABBOTSFORD
ABBOTSFORD BC

AERODROME CHART

VOT 115.7	ATIS 119.8	GND 121.8	TWR 119.4 295.0	DEP VICTORIA TERMINAL 132.7 290.8
			O/T RADIO(RCO) CRANBROOK 119.4 295.0 (MF CZ)	

DECLARED DISTANCES	07	25	01	19				
	TORA	9600	9600	5328	5328			
TODA	10160	10600	6328	5978				
ASDA	9600	9600	5328	5328				
LDA	9600	9305	5328	5328				



TAKE-OFF MINIMA	SCALE IN FEET
Rwys 07; 19; 25: *	1000 0 1000 2000 3000 4000

AERODROME CHART
EFF 13 APR 06

CHANGE: Revised

ABBOTSFORD BC
ABBOTSFORD
NAD83

© 2006 Her Majesty The Queen in Right of Canada, Department of Natural Resources. All rights reserved. Source of Canadian Civil Aeronautical Data: © 2006 NAV CANADA. All rights reserved.