

RNAV(GNSS) A

MASSET  
MASSET BC

**NO CTL-BCST INTENTIONS ON 126.7 WITHIN 15 MIN OF ETA AND PRIOR TO DESCENT, THEN ON ATF 5 MIN PRIOR TO COMMENCING APCH**

**TFC**  
**122.7 (MF 5 NM)**

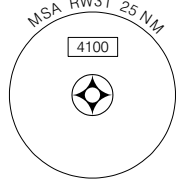
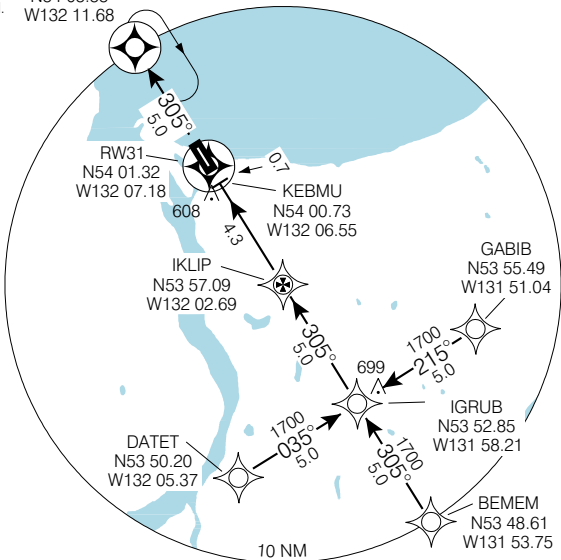
**ELEV 25**

CZMT

When using Sandspit altimeter setting add **110'** to all procedure altitudes.

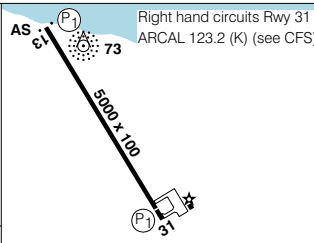
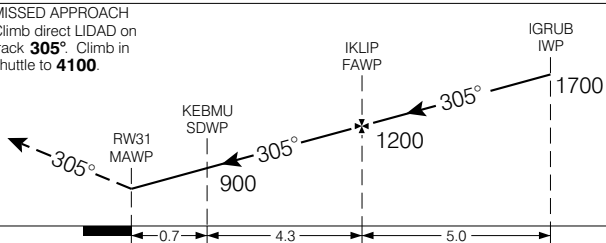
Verify runway unobstructed.

LIDAD  
N54 05.55  
W132 11.68



SAFE ALT 100 NM **9400**

**MISSED APPROACH**  
Climb direct LIDAD on track **305°**. Climb in shuttle to **4100**.



CATEGORY	A				B		C		D	
LNAV / VNAV	NOT AUTHORIZED									
LNAV	NOT AUTHORIZED									
* CIRCLING	<b>620</b>	(595)	1%	<b>700</b>	(675)	2	<b>720</b>	(695)	2	

(P1) Rwy 31 - 3.5° R \*

Knots	70	90	110	130	150
Min:Sec					

RNAV(GNSS) A

N54 01 39 W132 07 31

VAR 23° E (2001)

MASSET BC

EFF 13 APR 06

CHANGE: Comm box; GPS to GNSS

MASSET  
NAD83 ♦

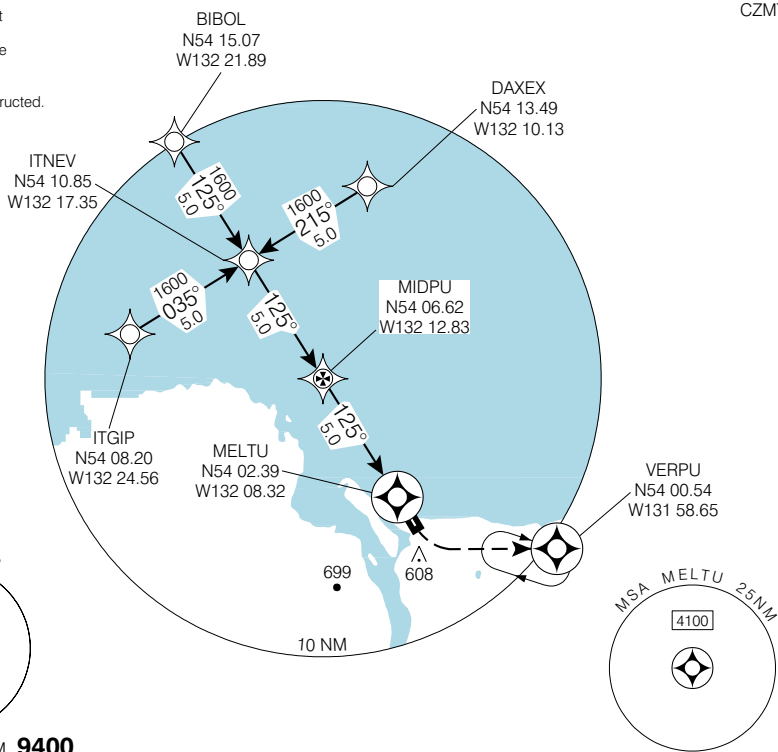
# RNAV (GNSS) RWY 13

MASSET  
MASSET BC

<b>NO CTL-BCST INTENTIONS ON 126.7 WITHIN 15 MIN OF ETA AND PRIOR TO DESCENT, THEN ON ATF 5 MIN PRIOR TO COMMENCING APCH</b>	<b>TFC</b> 122.7 (MF 5 NM)	<b>ELEV 25</b>
		<b>TDZE 13 22</b>

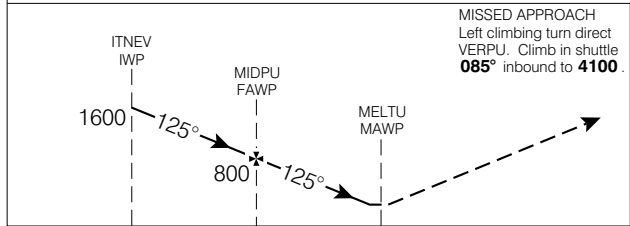
© 2006 Her Majesty The Queen in Right of Canada, Department of Natural Resources. All rights reserved

When using Sandspit altimeter setting add **110'** to all procedure altitudes.  
Verify runway unobstructed.

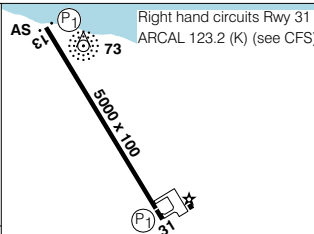


SAFE ALT 100 NM **9400**

Source of Canadian Civil Aeronautical Data: © 2006 NAV CANADA. All rights reserved



**MISSED APPROACH**  
Left climbing turn direct VERPU. Climb in shuttle **085°** inbound to **4100**.



Right hand circuits Rwy 31  
ARCAL 123.2 (K) (see CFS)

CATEGORY	A		B		C		D	
LNAV/VNAV	NOT AUTHORIZED							
LNAV	<b>540</b>		(518)		1 ½			
* CIRCLING	<b>580</b>		(555) 1¼		<b>700</b>		<b>720</b>	
					(675) 2		(695) 2	

(P) Rwy 31 - 3.5° R \*

Knots				
Min:Sec				

# RNAV (GNSS) RWY 13

N54 01 39 W132 07 31

VAR 23° E (2001)

MASSET BC  
MASSET  
NAD83

EFF 13 APR 06

CHANGE: Comm box; GPS to GNSS

# NDB RWY 13

MASSET  
MASSET BC

**NO CTL-BCST INTENTIONS ON 126.7 WITHIN 15 MIN OF ETA AND PRIOR TO DESCENT, THEN ON ATF 5 MIN PRIOR TO COMMENCING APCH**

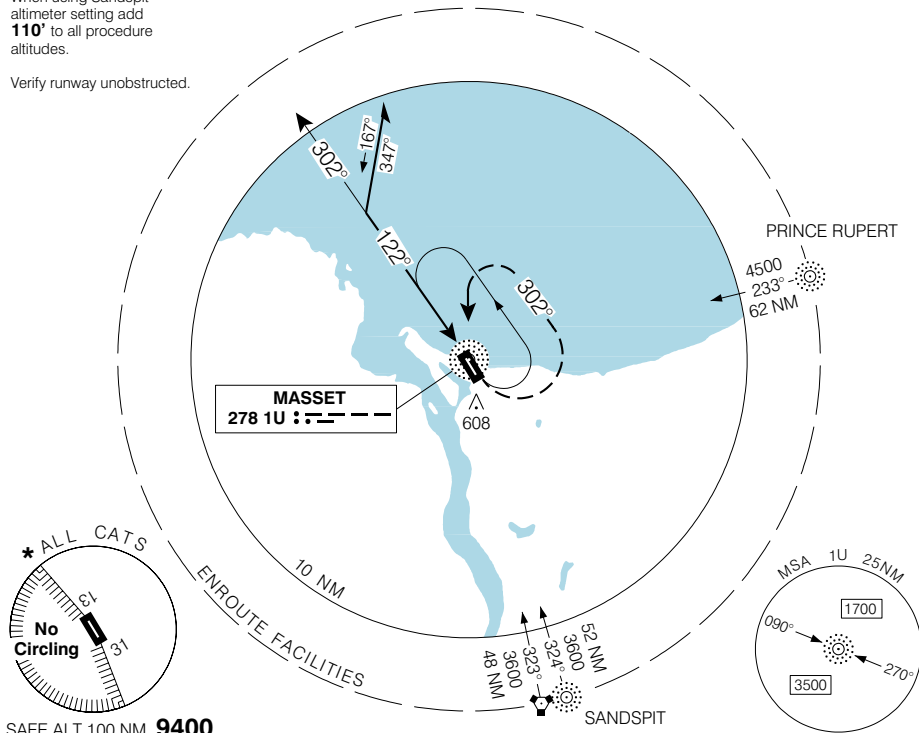
**TFC**  
**122.7 (MF 5 NM)**

**ELEV 25**  
**TDZE 13 22**

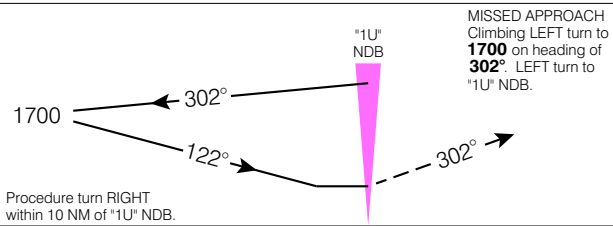
CZMT

When using Sandspit altimeter setting add **110'** to all procedure altitudes.

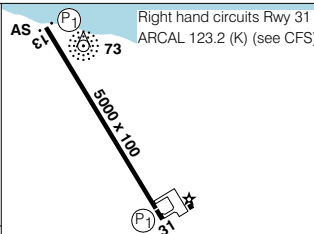
Verify runway unobstructed.



SAFE ALT 100 NM **9400**



Procedure turn **RIGHT** within 10 NM of "1U" NDB.



Right hand circuits Rwy 31  
ARCAL 123.2 (K) (see CFS)

CATEGORY	A	B	C	D
NDB	<b>540</b>	(518)	1¼	<b>720</b> (698) 2 ½
<b>★ CIRCLING</b>	<b>580</b>	(555) 1¼	<b>700</b> (675) 2	<b>720</b> (695) 2 ½

(P1) Rwy 31 - 3.5° **R**  
\*

Knots	70	90	110	130	150
Min:Sec					

# NDB RWY 13

N54 01 39 W132 07 31

VAR 22° E

MASSET BC

EFF 13 APR 06

CHANGE: Comm box

MASSET  
NAD83 ♦

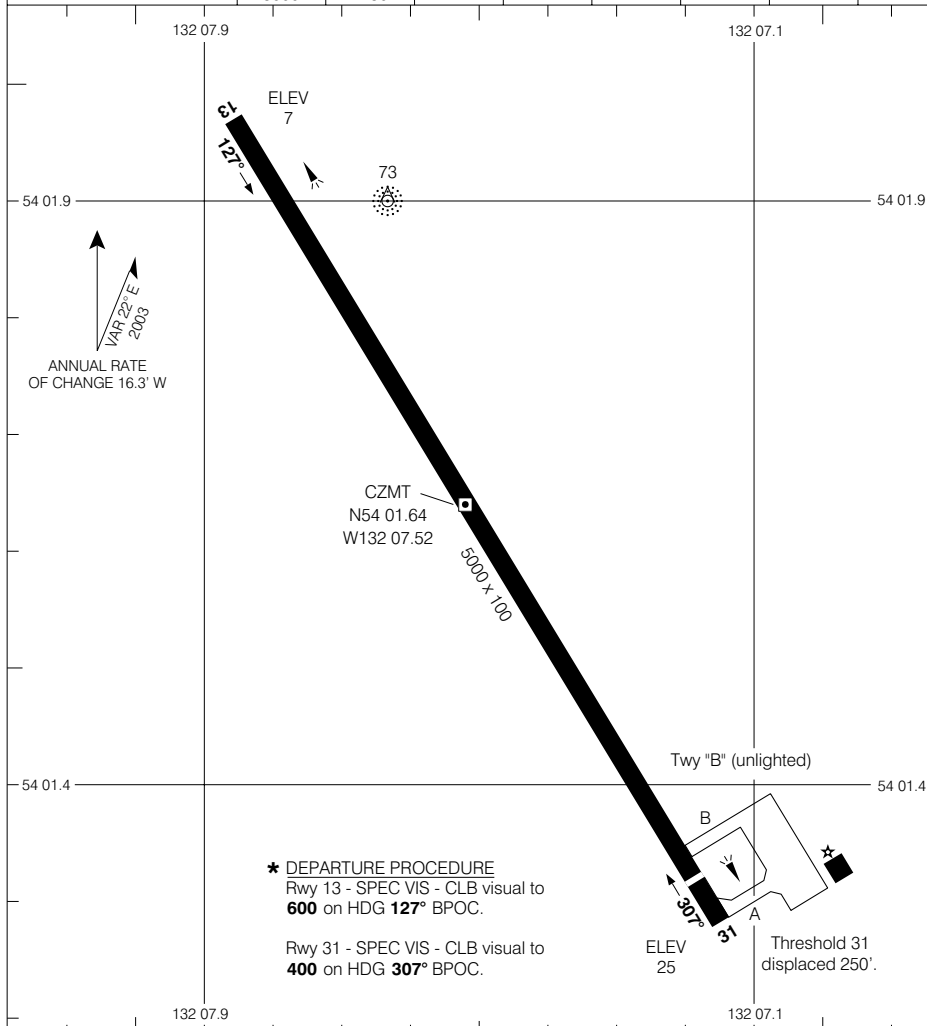
**AERODROME CHART**

MASSET  
MASSET BC

**TFC**  
**122.7 (MF 5 NM)**

**DECLARED DISTANCES**

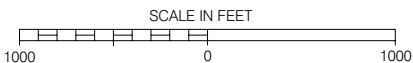
	<b>13</b>	<b>31</b>						
TORA	5000	5000						
TODA	5000	5000						
ASDA	5000	5000						
LDA	5000	4750						



**\* DEPARTURE PROCEDURE**  
 Rwy 13 - SPEC VIS - CLB visual to **600** on HDG **127°** BPOC.  
 Rwy 31 - SPEC VIS - CLB visual to **400** on HDG **307°** BPOC.

**TAKE-OFF MINIMA**

Rwys 13, 31: \*



**AERODROME CHART**

CHANGE: Comm box

MASSET BC  
MASSET  
NAD83

EFF 13 APR 06

© 2006 Her Majesty The Queen in Right of Canada, Department of Natural Resources. All rights reserved. Source of Canadian Civil Aeronautical Data: © 2006 NAV CANADA. All rights reserved.