

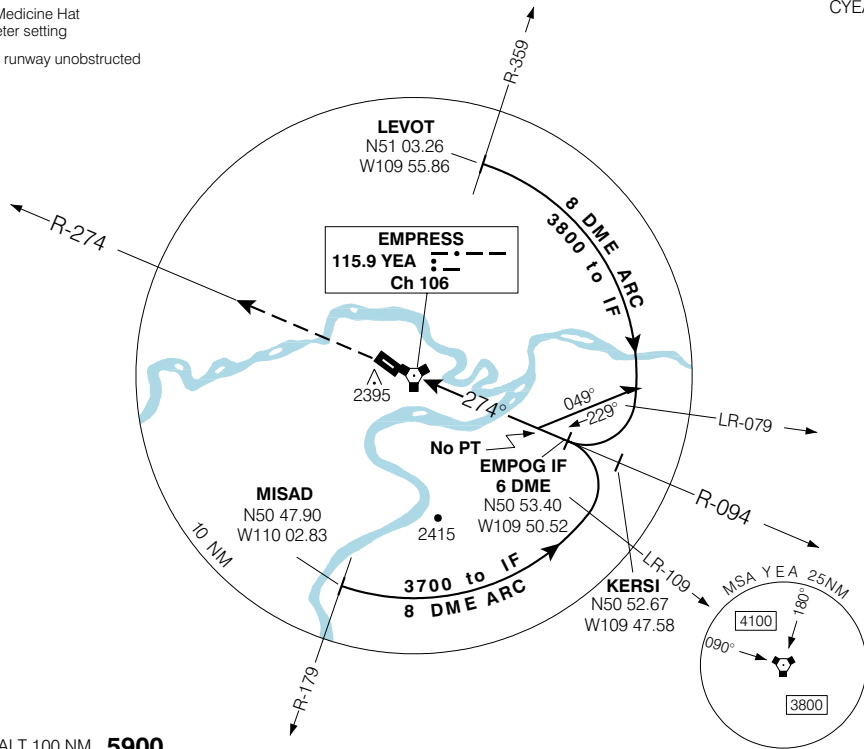
VOR A (GNSS)

EMPRESS
EMPRESS AB

RADIO EDMONTON 126.7	TFC 123.2 (ATF 5 NM)	ELEV 2211
--------------------------------	-----------------------------------	------------------

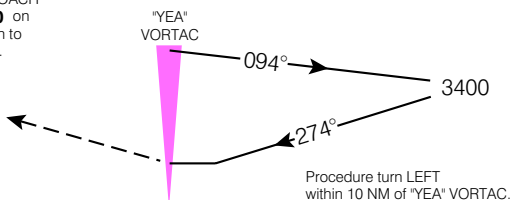
Use Medicine Hat altimeter setting
Verify runway unobstructed

CYEA

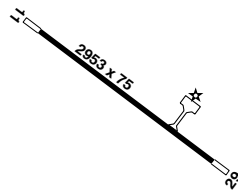


SAFE ALT 100 NM **5900**

MISSED APPROACH
Climb to **4100** on
R-274. Return to
"YEA" VORTAC.



ARCAL 123.2 (K)



CATEGORY	A	B	C	D
CIRCLING	2840	(629)	2	NOT AUTH

Knots	70	90	110	130	150
Min:Sec					

VOR A (GNSS)

N50 56 00 W110 00 47

VAR 15° E

EMPRESS AB

EFF 13 APR 06 CHANGE: GPS to GNSS

EMPRESS
NAD83



Geomatics Canada

EMPRESS
EMPRESS AB

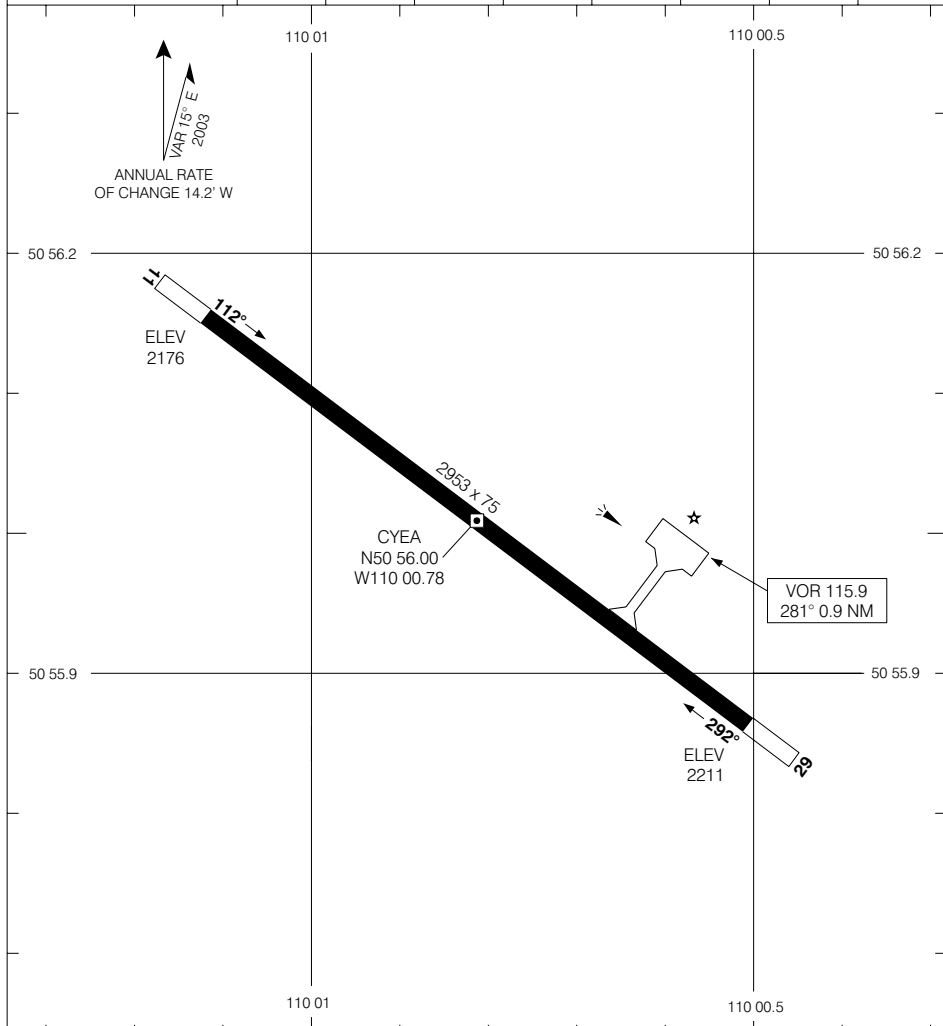
AERODROME CHART

TFC
123.2 (ATF 5 NM)

DECLARED DISTANCES

	11	29						
TORA	_____	_____						
TODA	_____	_____						
ASDA	_____	_____						
LDA	_____	_____						

VAR 15° E
2003
 ANNUAL RATE
 OF CHANGE 14.2' W



TAKE-OFF MINIMA

Rwys 11, 29: ½

SCALE IN FEET



AERODROME CHART

EFF 22 DEC 05

CHANGE: Editorial

EMPRESS AB
EMPRESS

NAD83

© 2005 Her Majesty The Queen in Right of Canada, Department of Natural Resources

Source of Canadian Civil Aeronautical Data: © 2005 NAV CANADA