







Geomatics Canada

FLIN FLON  
FLIN FLON MANITOBA

**NDB RWY 18**

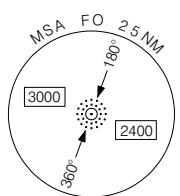
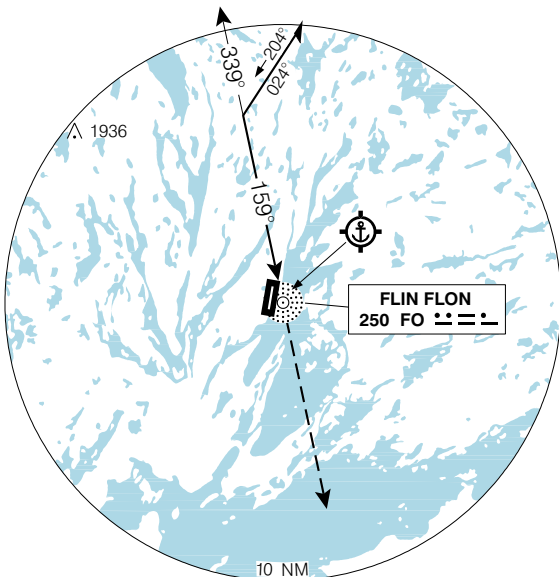
<b>ARR/DEP RADIO (RCO) WINNIPEG 123.275</b>	<b>RADIO (RCO) WINNIPEG 122.0 (MF 5 NM) O/T TFC 122.0</b>	<b>ELEV 997</b>
		<b>TDZE 18 997</b>

Altimeter setting available limited hours.

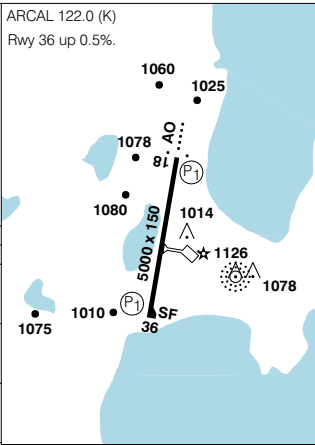
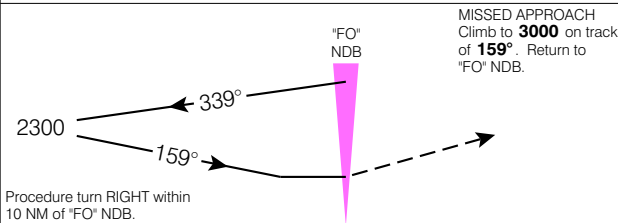
When using The Pas altimeter setting, add **120'** to all procedure altitudes.

Verify runway unobstructed when A/G advisory not available.

CYFO



SAFE ALT 100 NM **3800**



CATEGORY	A	B	C	D
NDB	<b>1680</b>	(683)		2
CIRCLING	<b>1680</b>	(683)		2

Knots	70	90	110	130	150
Min:Sec					

**NDB RWY 18**

N54 40 41 W101 40 54

VAR 9° E

FLIN FLON MANITOBA

EFF 27 OCT 05 CHANGE: Comm boxes; Operational note

FLIN FLON

NAD83



Geomatics Canada

FLIN FLON  
FLIN FLON MANITOBA

**NDB RWY 36**

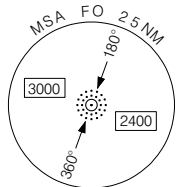
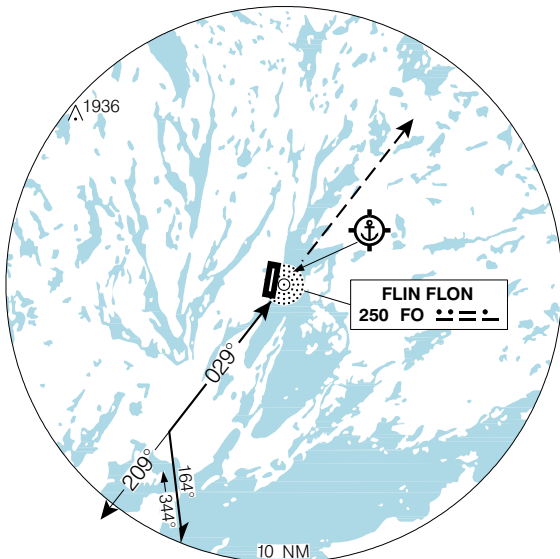
<b>ARR/DEP RADIO (RCO) WINNIPEG 123.275</b>	<b>RADIO (RCO) WINNIPEG 122.0 (MF 5 NM) O/T TFC 122.0</b>	<b>ELEV 997</b>
		<b>TDZE 36 980</b>

Altimeter setting available limited hours.

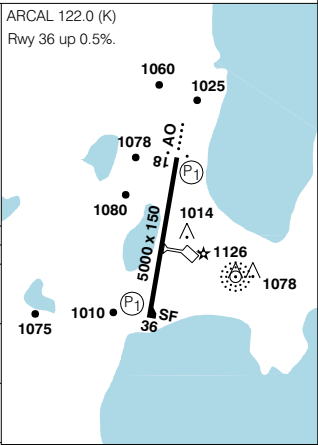
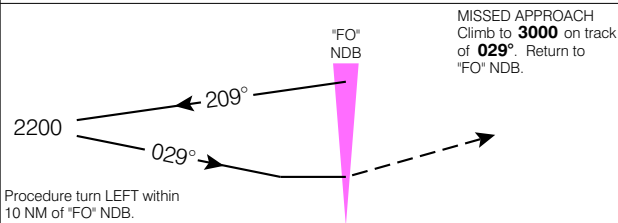
When using The Pas altimeter setting, add **120'** to all procedure altitudes.

Verify runway unobstructed when A/G advisory not available.

CYFO



SAFE ALT 100 NM **3800**



CATEGORY	A	B	C	D
NDB	<b>1500</b>	(520)	1 ½	
CIRCLING	<b>1500</b>	(503) 1 ½	<b>1500</b> (503) 2	<b>1600</b> (603) 2

Knots	70	90	110	130	150
Min:Sec					

**NDB RWY 36**

N54 40 41 W101 40 54

VAR 9° E

FLIN FLON MANITOBA

EFF 27 OCT 05 CHANGE: Comm boxes; Operational note

FLIN FLON

NAD83



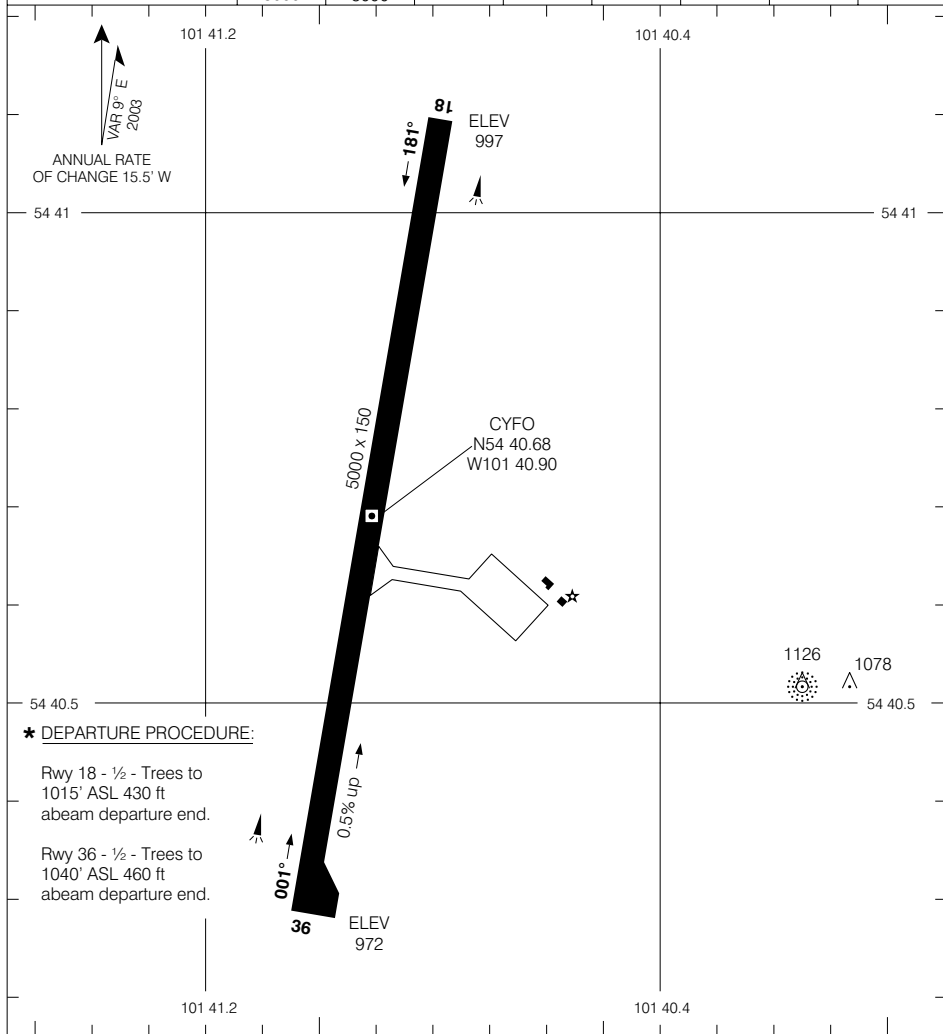
Geomatics Canada

FLIN FLON  
FLIN FLON MB

AERODROME CHART

<b>☉ RADIO (RCO)</b> <b>WINNIPEG</b> <b>122.0 (MF 5 NM) O/T TFC 122.0</b>	<b>DEP</b> <b>RADIO (RCO)</b> <b>WINNIPEG 123.275</b>
---	---

DECLARED DISTANCES	18	36						
	TORA	5000	5000					
TODA	6000	6000						
ASDA	5000	5000						
LDA	5000	5000						



**\* DEPARTURE PROCEDURE:**

Rwy 18 - ½ - Trees to 1015' ASL 430 ft abeam departure end.

Rwy 36 - ½ - Trees to 1040' ASL 460 ft abeam departure end.

Rwys 18, 36: \*

© 2005 Her Majesty The Queen in Right of Canada, Department of Natural Resources

Source of Canadian Civil Aeronautical Data © 2005 NAV CANADA

AERODROME CHART

EFF 22 DEC 05

CHANGE: Editorial

FLIN FLON MB  
FLIN FLON  
NAD83