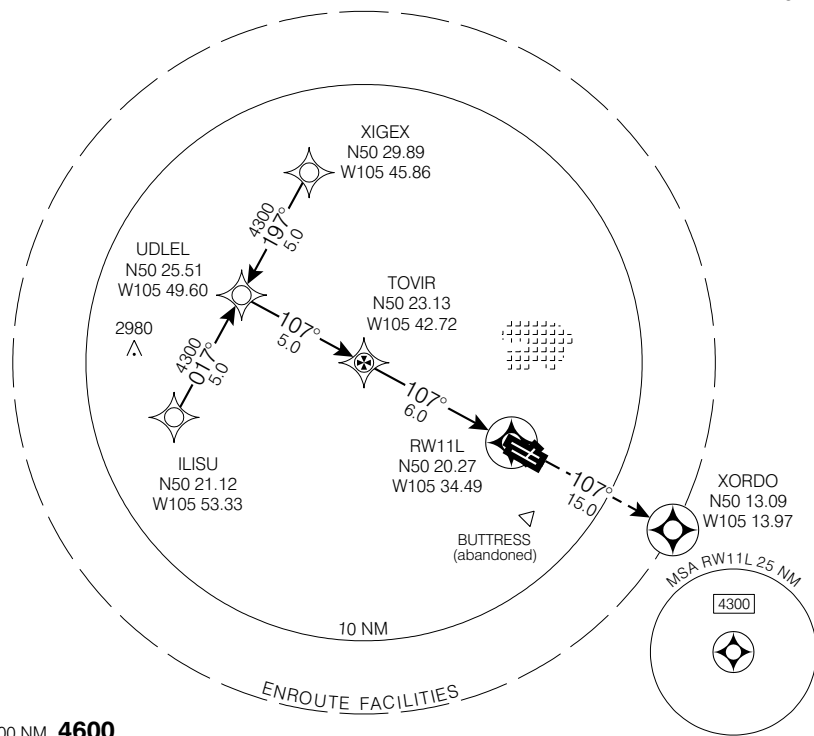


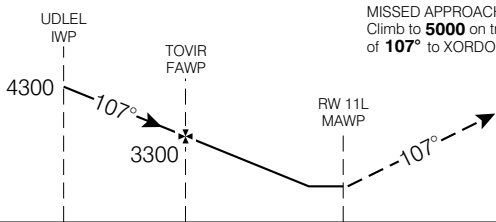
RNAV (GNSS) RWY 11L (DND) MOOSE JAW / AIR VICE MARSHAL C.M. McEWEN APRT
MOOSE JAW SK

● ATIS 257.8	● CLNC DEL 135.3 234.4	● ARR 119.0 227.6	● PAR 129.1 136.5 378.5 381.3	● TWR 126.2 295.6	● GND 121.8 275.8	● DEP 119.0 227.6	ELEV 1892 TDZE 11L 1882
------------------------	-------------------------------------	--------------------------------	--	--------------------------------	--------------------------------	--------------------------------	--

CYJM

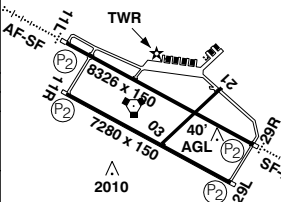


SAFE ALT 100 NM **4600**



MISSED APPROACH
Climb to **5000** on track
of **107°** to XORDO.

Right hand circuits
Rwys 11R & 29R
Rwy 03-21 3400 x 100



CATEGORY	A				B		C		D
LNAV / VNAV	NOT AUTHORIZED								
LNAV	2220		(338)		1				
CIRCLING	2400	(508)	1 ½	2400	(508)	2	2500	(608)	2
PAR 11L	2082		(200)		½ G/S 3.0°				

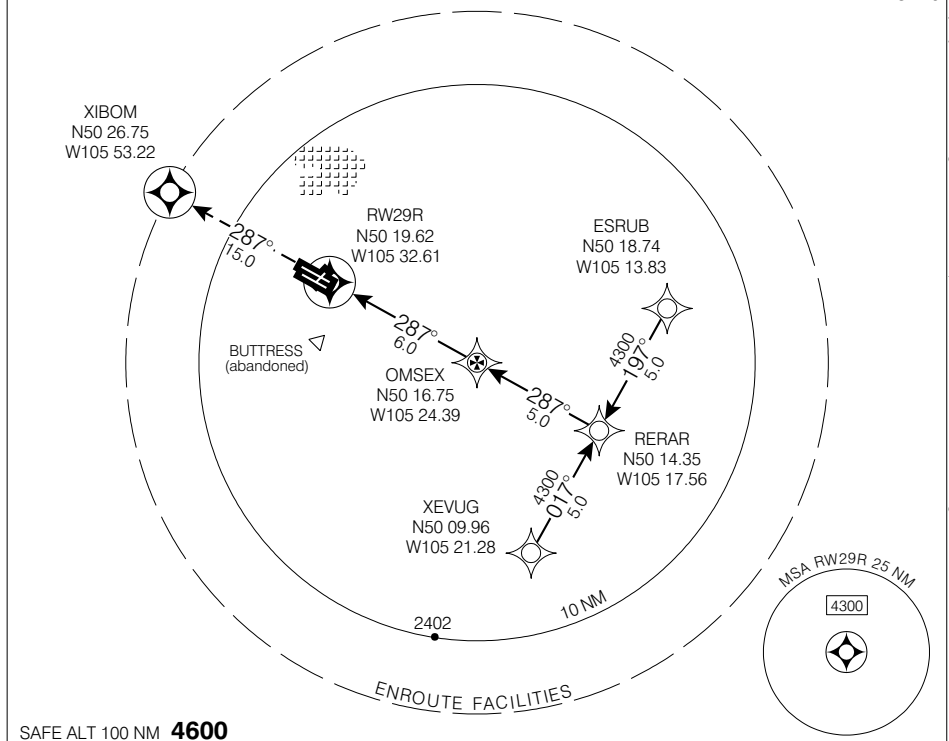
Knots	70	90	110	130	150
Min:Sec					

RNAV (GNSS) RWY 11L (DND) N50 19 49 W105 33 33 VAR 12° E (2004) MOOSE JAW SK
MOOSE JAW / AIR VICE MARSHAL C.M. McEWEN APRT
EFF 13 APR 06 CHANGE: GPS to GNSS NAD83

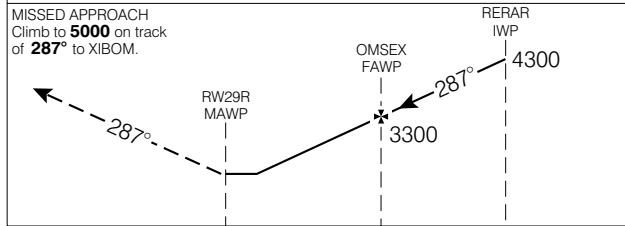
RNAV (GNSS) RWY 29R (DND) MOOSE JAW / AIR VICE MARSHAL C.M. McEWEN APRT
MOOSE JAW SK

● ATIS 257.8	● CLNC DEL 135.3 234.4	● ARR 119.0 227.6	● PAR 129.1 136.5 378.5 381.3	● TWR 126.2 295.6	● GND 121.8 275.8	● DEP 119.0 227.6	ELEV 1892 TDZE 29R 1881
------------------------	-------------------------------------	--------------------------------	--	--------------------------------	--------------------------------	--------------------------------	--

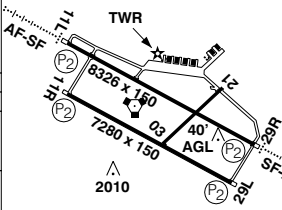
CYMJ



SAFE ALT 100 NM **4600**



Right hand circuits
Rwys 11R & 29R
Rwy 03-21 3400 x 100



CATEGORY	A	B	C	D
LNAV / VNAV	NOT AUTHORIZED			
LNAV	2220	(339)	1 RVR 50	
CIRCLING	2400	(508)	1 ½	2400 (508) 2
PAR 29R	2081	(200)	½ RVR 26	G/S 3.0°

Knots	70	90	110	130	150
Min:Sec					

RNAV (GNSS) RWY 29R (DND) N50 19 49 W105 33 33 VAR 12° E (2004) MOOSE JAW SK
MOOSE JAW / AIR VICE MARSHAL C.M. McEWEN APRT
EFF 13 APR 06 CHANGE: GPS to GNSS NAD83

© 2006 Her Majesty The Queen in Right of Canada, Department of Natural Resources. All rights reserved. Source of Canadian Civil Aeronautical Data: © 2006 NAV CANADA. All rights reserved.

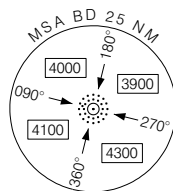
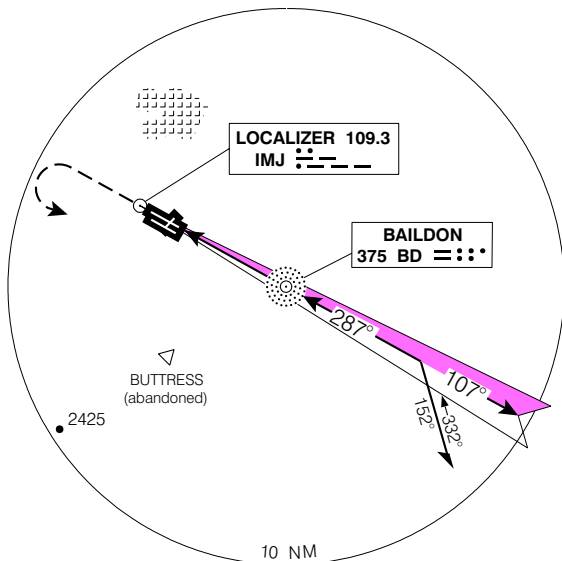
MOOSE JAW / AIR VICE MARSHAL C.M. McEWEN APRT
Geomatics Canada
MOOSE JAW SK

ILS or NDB RWY 29R (DND)

● ATIS 257.8	● CLNC DEL 135.3 234.4	● ARR 119.0 227.6	● PAR 129.1 136.5 378.5 381.3	● TWR 126.2 295.6	● GND 121.8 275.8	● DEP 119.0 227.6	ELEV 1892
							TDZE 29R 1881

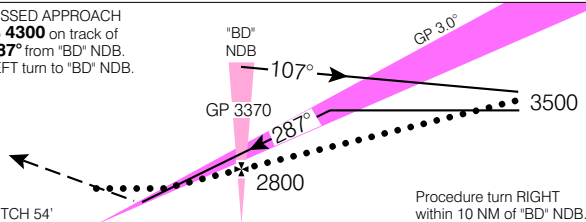
CYMJ

© 2005 Her Majesty The Queen in Right of Canada, Department of Natural Resources



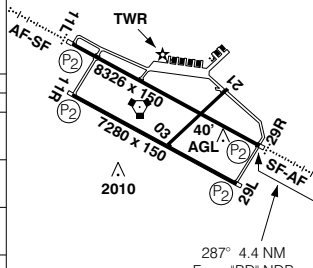
SAFE ALT 100 NM **4600**

MISSED APPROACH
To **4300** on track of
287° from 'BD' NDB.
LEFT turn to 'BD' NDB.



Right hand circuits
Rwys 11R & 29R

Rwy 03-21 3400 x 100



CATEGORY	A	B	C	D
ILS	2081	(200)	½ RVR 26	
LOC	2200	(319)	1 RVR 50	
NDB	2340	(459)	1 RVR 50	
CIRCLING	2400	(508)	1 ½	2400 (508) 2 2500 (608) 2
PAR 29R	2081	(200)	½ RVR 26	G/S 3.0°

"BD" NDB to MAP 4.4 NM				
Knots	70	90	110	130 150
Min:Sec	3:46	2:56	2:24	2:02 1:46

ILS or NDB RWY 29R (DND)

EFF 7 JUL 05

CHANGE: Rwy 11L-29R length

N50 19 49 W105 33 33 VAR 12° E

MOOSE JAW SK
MOOSE JAW / AIR VICE MARSHAL C.M. McEWEN APRT

NAD83

ILS/DME RWY 11L (DND)

MOOSE JAW / AIR VICE MARSHAL C.M. McEWEN APRT
Geomatics Canada MOOSE JAW SK

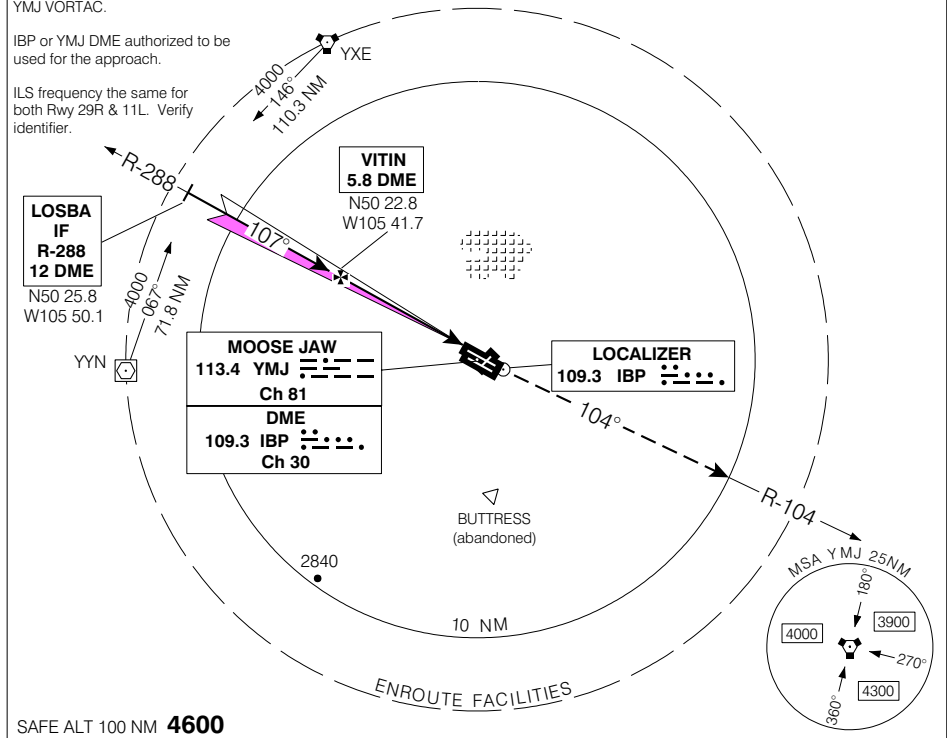
● ATIS 257.8	● CLNC DEL 135.3 234.4	● ARR 119.0 227.6	● PAR 129.1 136.5 378.5 381.3	● TWR 126.2 295.6	● GND 121.8 275.8	● DEP 119.0 227.6	ELEV 1892 TDZE 11L 1882
-----------------	------------------------------	-------------------------	-------------------------------------	-------------------------	-------------------------	-------------------------	--

ILS/DME co-located with YMJ VORTAC.

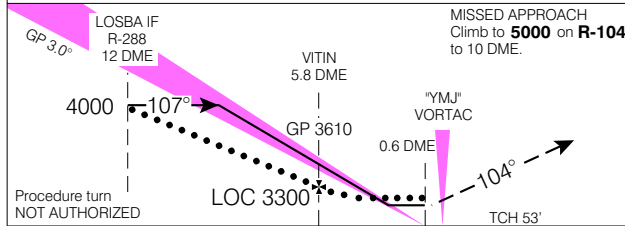
IBP or YMJ DME authorized to be used for the approach.

ILS frequency the same for both Rwy 29R & 11L. Verify identifier.

CYMJ

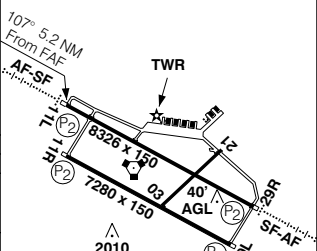


SAFE ALT 100 NM **4600**



MISSED APPROACH
Climb to **5000** on **R-104** to 10 DME.

Right hand circuits
Rwys 11R & 29R
Rwy 03-21 3400 x 100



CATEGORY	A	B	C	D	
ILS/DME	2082	(200)		½	
LOC/DME	2200	(318)		1	
CIRCLING	2400	(508)	1 ½	2400 (508) 2	2500 (608) 2
PAR 11L	2082	(200)	½	G/S 3.0°	

FAF to MAP 5.2 NM					
Knots	70	90	110	130	150
Min:Sec	4:27	3:28	2:50	2:24	2:05

ILS/DME RWY 11L (DND)

EFF 22 DEC 05

CHANGE: Editorial

N50 19 49 W105 33 33

MOOSE JAW SK

MOOSE JAW / AIR VICE MARSHAL C.M. McEWEN APRT

VAR 12° E

NAD83

MOOSE JAW / AIR VICE MARSHAL C.M. McEWEN APRT

Geomatics Canada

MOOSE JAW SK

ILS/DME RWY 29R (DND)

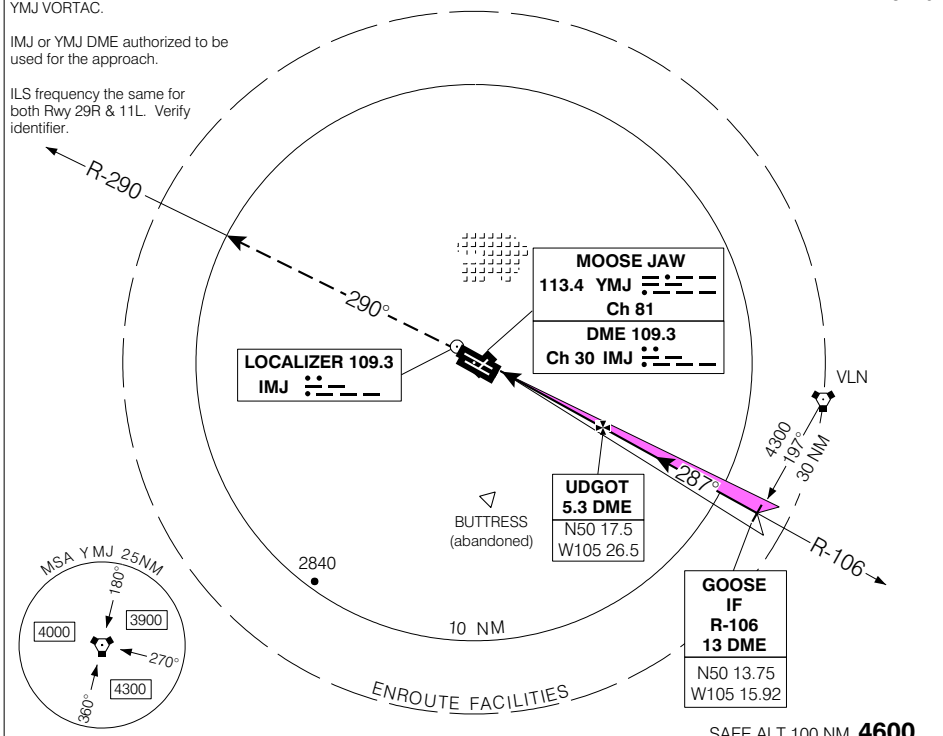
● ATIS 257.8	● CLNC DEL 135.3 234.4	● ARR 119.0 227.6	● PAR 129.1 136.5 378.5 381.3	● TWR 126.2 295.6	● GND 121.8 275.8	● DEP 119.0 227.6	ELEV 1892 TDZE 29R 1881
-----------------	------------------------------	-------------------------	-------------------------------------	-------------------------	-------------------------	-------------------------	--

ILS DME co-located with YMJ VORTAC.

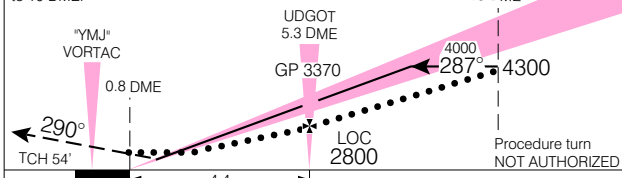
IMJ or YMJ DME authorized to be used for the approach.

ILS frequency the same for both Rwy 29R & 11L. Verify identifier.

CYMJ

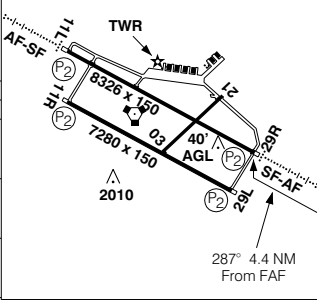


MISSED APPROACH
Climb to **5000** on R-290 to 10 DME.



Right hand circuits
Rwys 11R & 29R
Rwy 03-21 3400 x 100

CATEGORY	A	B	C	D
ILS/DME	2081	(200)	½ RVR 26	
LOC/DME	2200	(319)	1 RVR 50	
CIRCLING	2400	(508) 1 ½	2400	2500
			(508) 2	(608) 2
PAR 29R	2081	(200)	½ RVR 26	G/S 3.0°



ILS/DME RWY 29R (DND)

EFF 7 JUL 05 CHANGE: Rwy 11L-29R length

N50 19 49 W105 33 33 VAR 12° E

MOOSE JAW SK

MOOSE JAW / AIR VICE MARSHAL C.M. McEWEN APRT

NAD83

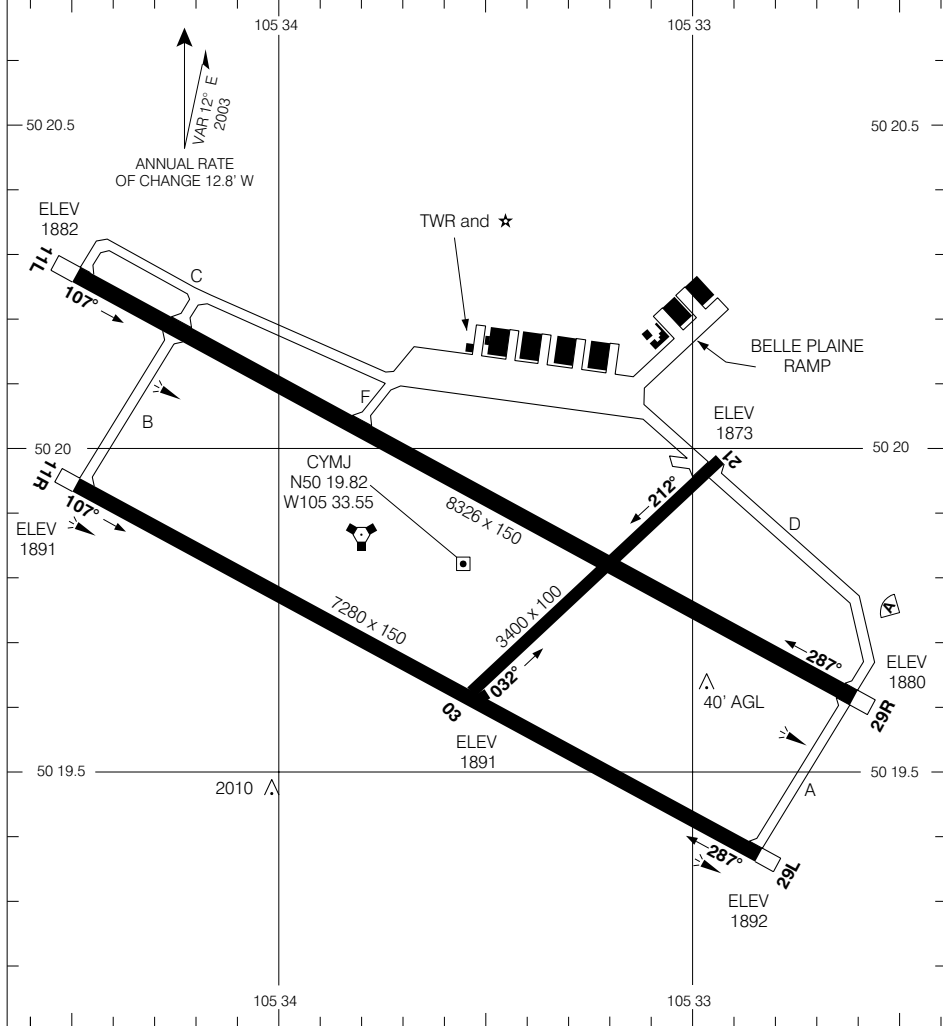
MOOSE JAW / AIR VICE MARSHAL C.M. McEWEN APRT

Geomatics Canada

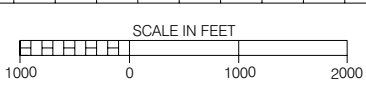
MOOSE JAW SK

VOT 114.8	ATIS 257.8	CLNC DEL 135.3 234.4	GND 121.8 275.8	TWR 126.2 295.6	DEP 119.0 227.6
---------------------	----------------------	-----------------------------------	------------------------------	------------------------------	------------------------------

DECLARED DISTANCES	11L	29R	11R	29L	03	21
	TORA	8326	8326	7280	7280	3400
TODA	9326	9326	8280	8280	4400	4400
ASDA	8326	8326	7280	7280	3400	3400
LDA	8326	8326	7280	7280	3400	3400



TAKE-OFF MINIMA
Rwys 11L, 11R, 29L, 29R: ½



© 2005 Her Majesty The Queen in Right of Canada, Department of Natural Resources

AERODROME CHART (DND)

EFF 22 DEC 05 CHANGE: Editorial

MOOSE JAW / AIR VICE MARSHAL C.M. McEWEN APRT

MOOSE JAW SK

NAD83