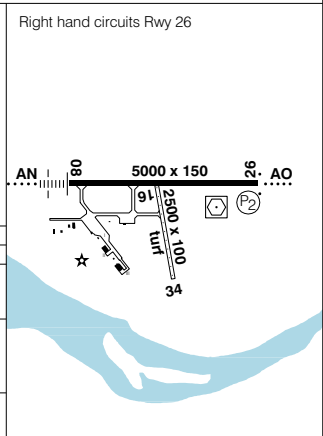
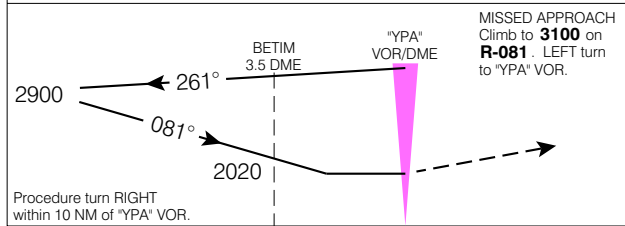
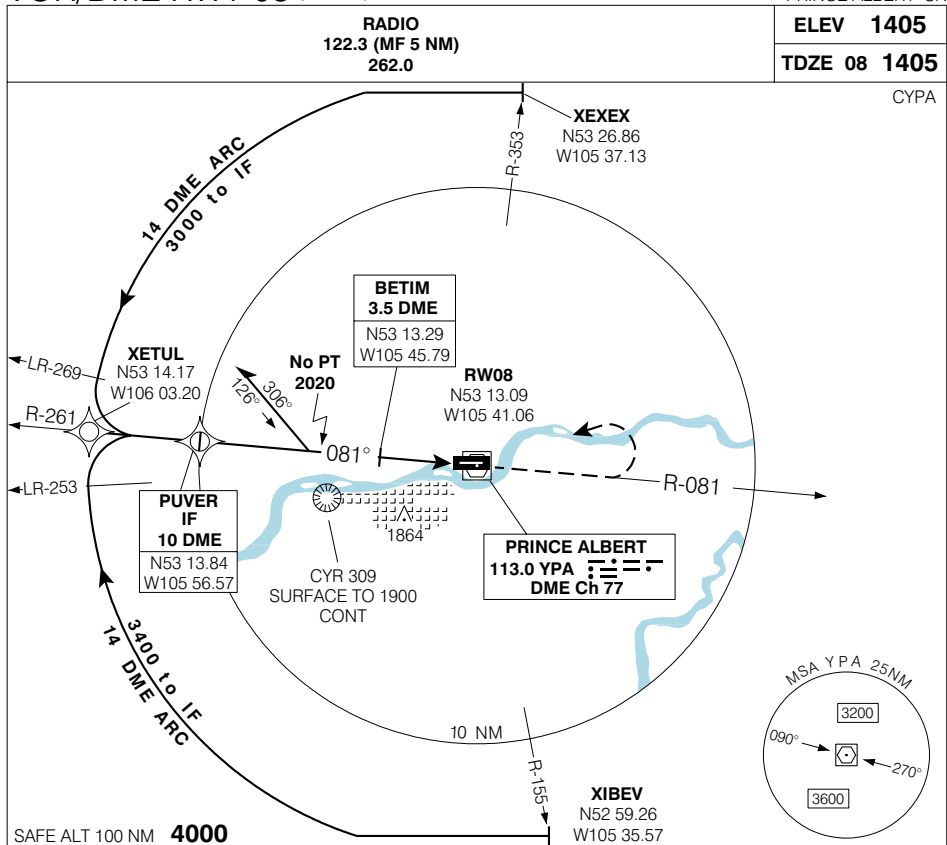


VOR/DME RWY 08 (GNSS)

PRINCE ALBERT (GLASS FIELD)

PRINCE ALBERT SK



CATEGORY	A	B	C	D
VOR/DME	<b>1860</b>	(455)	1	
CIRCLING	<b>1920</b>	(515) 1 1/2	<b>1920</b>	<b>2020</b>
			(515) 2	(615) 2

Knots	70	90	110	130	150
Min:Sec					

VOR/DME RWY 08 (GNSS)

EFF 13 APR 06

CHANGE: GPS to GNSS

N53 12 51 W105 40 22  
VAR 12° E

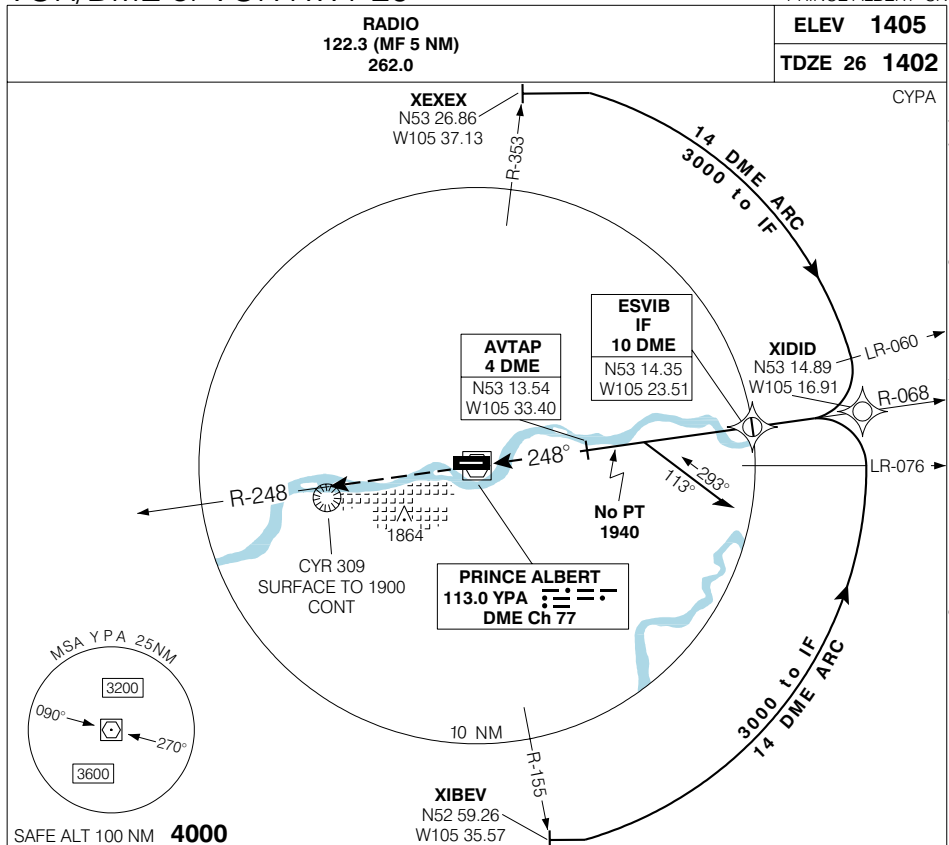
PRINCE ALBERT SK  
PRINCE ALBERT (GLASS FIELD)

NAD83

VOR/DME or VOR RWY 26 (GNSS)

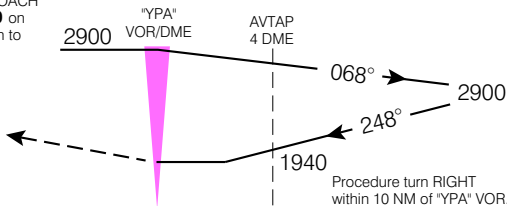
PRINCE ALBERT (GLASS FIELD)

PRINCE ALBERT SK

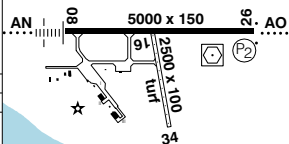


SAFE ALT 100 NM **4000**

MISSED APPROACH  
Climb to **3400** on  
**R-248** Return to  
"YPA" VOR.



Right hand circuits Rwy 26



CATEGORY	A	B	C	D
VOR/DME	<b>1880</b>	(478)		1 ½
VOR	<b>1940</b>	(538)		1¾
CIRCLING	<b>1940</b>	(535) 1¾	<b>1940</b>	<b>2020</b>
			(535) 2	(615) 2

Knots	70	90	110	130	150
Min:Sec					

VOR/DME or VOR RWY 26 (GNSS)

N53 12 51 W105 40 22  
VAR 12° E

PRINCE ALBERT SK

PRINCE ALBERT (GLASS FIELD)

EFF 13 APR 06

CHANGE: GPS to GNSS

NAD83

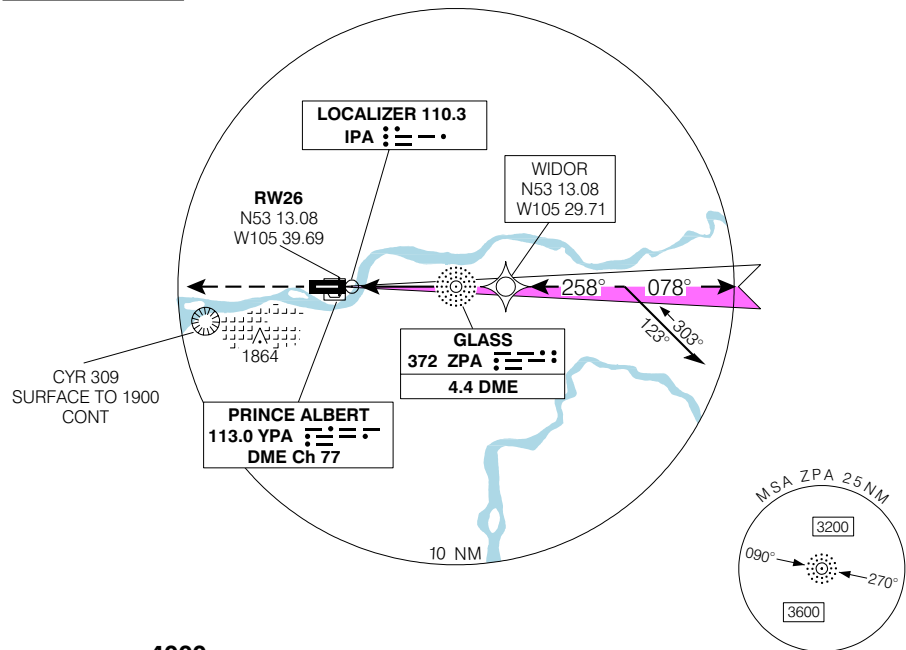
**LOC(BC) or NDB RWY 26 (GNSS)**

PRINCE ALBERT(GLASS FIELD)  
PRINCE ALBERT SK

<b>RADIO</b> 122.3 (MF 5 NM) 262.0	<b>ELEV 1405</b>
	<b>TDZE 26 1402</b>

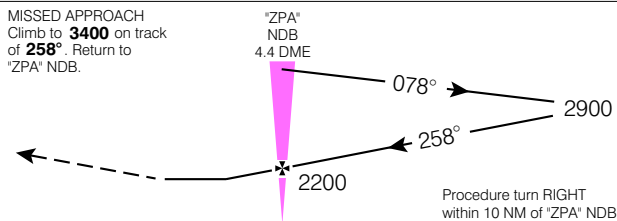
CYPA

**BACK COURSE  
NO GLIDE PATH  
IGNORE GLIDE  
PATH INDICATIONS**

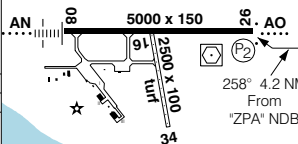


SAFE ALT 100 NM **4000**

MISSED APPROACH  
Climb to **3400** on track of **258°**. Return to "ZPA" NDB.



Right hand circuits rwy 26



CATEGORY	A	B	C	D
LOC(BC) LOC(BC)/DME	<b>1800</b>	(398)		1 ¼
NDB	<b>1940</b>	(538)		1%
CIRCLING	<b>1940</b>	(535)	2	<b>2020</b> (615) 2

*ZPA* NDB to MAP 4.2 NM				
Knots	70	90	110	130 150
Min:Sec	<b>3:36</b>	<b>2:48</b>	<b>2:17</b>	<b>1:56 1:41</b>

**LOC(BC) or NDB RWY 26 (GNSS)**

N53 12 51 W105 40 22  
VAR 12° E

PRINCE ALBERT SK  
PRINCE ALBERT(GLASS FIELD)

EFF 13 APR 06 CHANGE: GPS to GNSS

NAD83

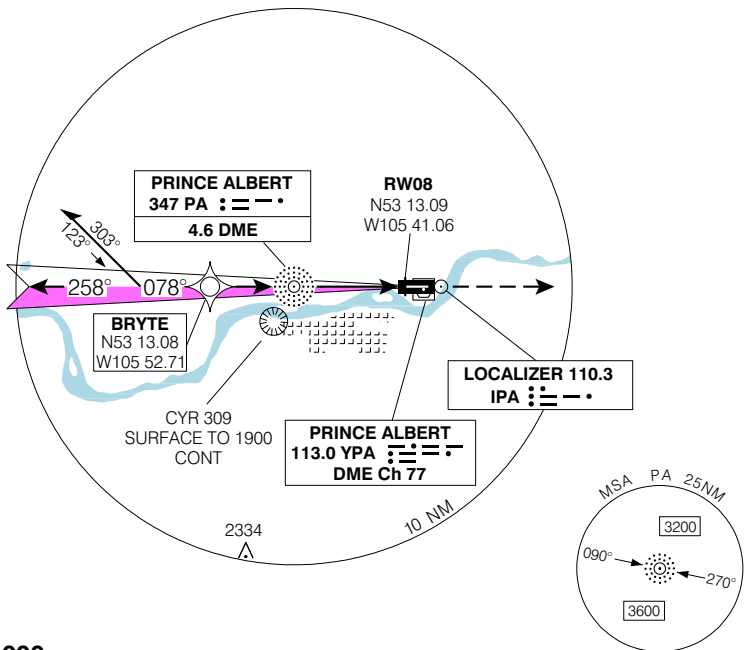
**ILS or NDB RWY 08 (GNSS)**

PRINCE ALBERT (GLASS FIELD)

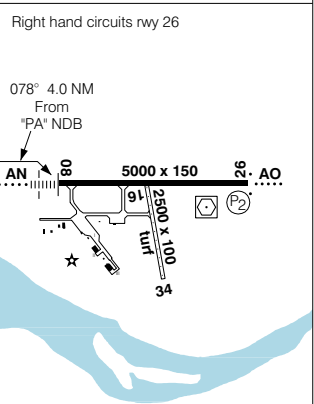
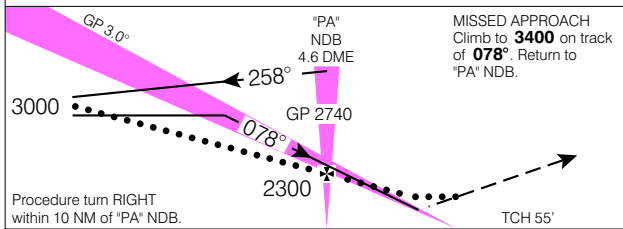
PRINCE ALBERT SK

<b>RADIO</b> <b>122.3 (MF 5 NM)</b> <b>262.0</b>	<b>ELEV 1405</b>
	<b>TDZE 08 1405</b>

CYPA



SAFE ALT 100 NM **4000**



CATEGORY	A	B	C	D
ILS ILS/DME	<b>1605</b>	(200)	½ RVR 26	
LOC LOC/DME	<b>1800</b>	(395)	1 RVR 50	
NDB	<b>1860</b>	(455)	1 RVR 50	
CIRCLING	<b>1920</b>	(515)	1 ½	<b>1920</b>
				(515) 2
			(615) 2	

*PA* NDB to MAP 4.0 NM					
Knots	70	90	110	130	150
Min:Sec	<b>3:26</b>	<b>2:40</b>	<b>2:11</b>	<b>1:51</b>	<b>1:36</b>

**ILS or NDB RWY 08 (GNSS)**

N53 12 51 W105 40 22 VAR 12° E

PRINCE ALBERT SK

EFF 13 APR 06

CHANGE: GPS to GNSS

PRINCE ALBERT (GLASS FIELD)

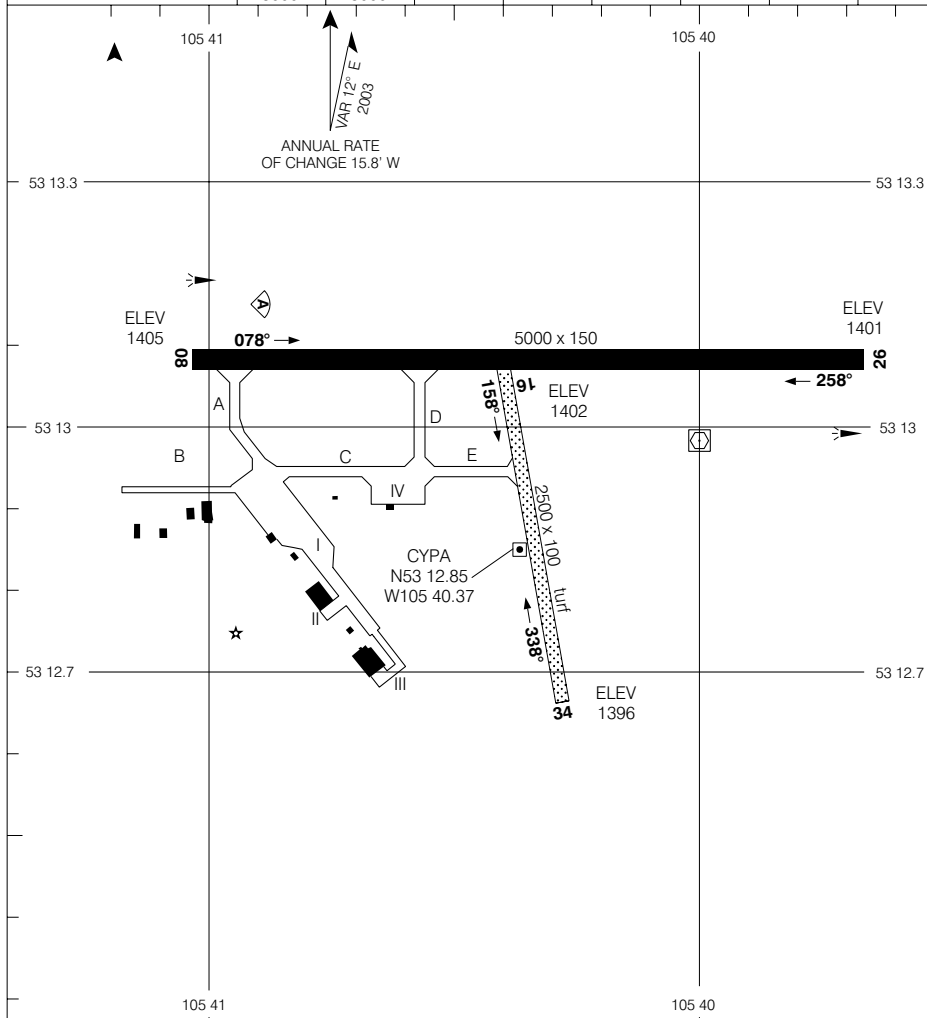
NAD83

AERODROME CHART

**RADIO**  
**122.3 (MF 5 NM)**  
**262.0**

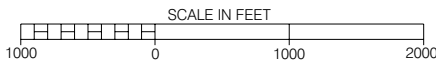
**DECLARED DISTANCES**

	08	26	16	34				
TORA	5000	5000	2500	2500				
TODA	6000	6000	2500	2500				
ASDA	5000	5000	2500	2500				
LDA	5000	5000	2500	2500				



TAKE-OFF MINIMA

Rwys 16, 34: NOT ASSESSED  
 Rwys 08, 26: ½



AERODROME CHART

EFF 13 APR 06

CHANGE: Declared distances

PRINCE ALBERT SK  
 PRINCE ALBERT(GLASS FIELD)

NAD83

© 2006 Her Majesty The Queen in Right of Canada, Department of Natural Resources. All rights reserved

Source of Canadian Civil Aeronautical Data: © 2006 NAV CANADA. All rights reserved