

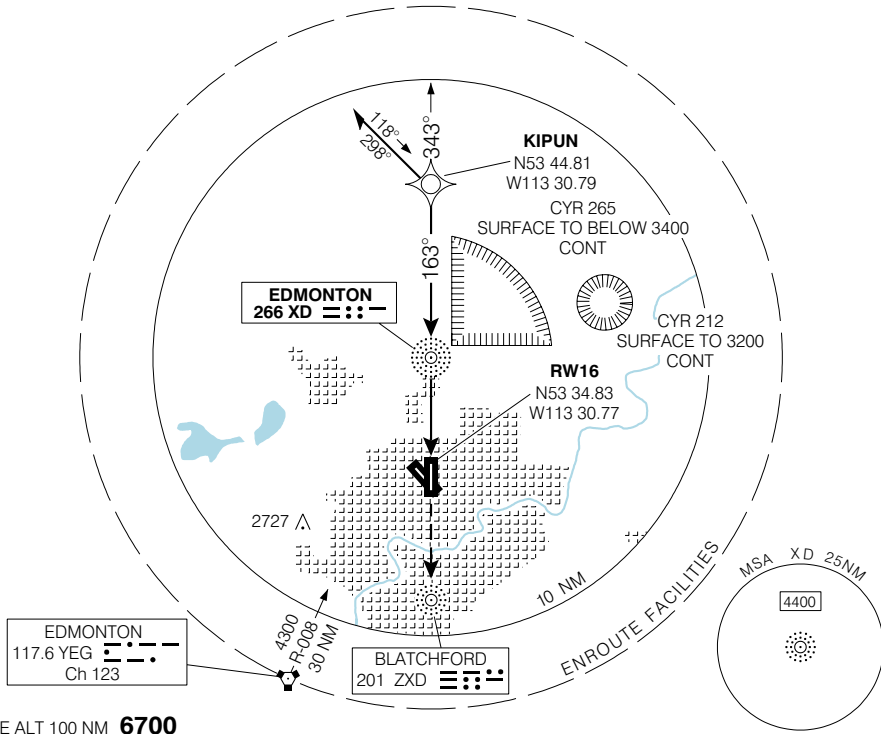
**NDB RWY 16 (GNSS)**

EDMONTON CITY CENTRE (BLATCHFORD FIELD)

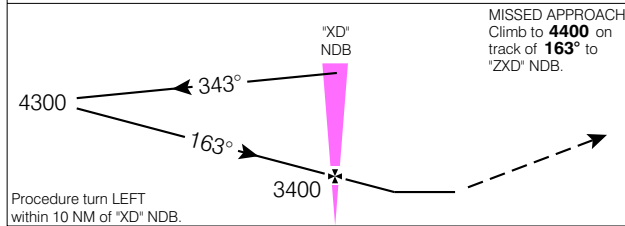
EDMONTON AB

<p>● <b>ATIS</b> 114.9 125.4</p>	<p>● <b>ARR</b> 119.5 226.3</p>	<p>● <b>TWR</b> 119.1 283.7 O/T RED DEER RDO 119.1 (MF 5 NM)</p>	<p>● <b>GND</b> 121.9</p>	<p><b>DEP</b> 119.5 226.3</p>	<p><b>ELEV 2200</b> <b>TDZE 16 2191</b></p>
--	---	--	-------------------------------	---------------------------------------	---

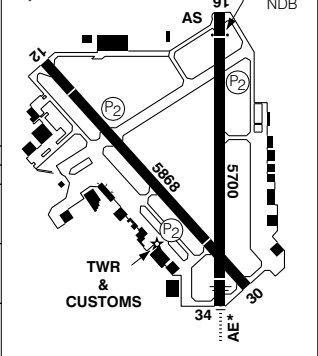
CYXD



SAFE ALT 100 NM **6700**



ALL THRESHOLDS DISPLACED  
SEE AERODROME CHART  
Right hand circuits  
Rwys 30 and 34



CATEGORY	A	B	C	D
NDB	<b>2740</b>	(549)	1 ¼	
CIRCLING	<b>3000</b>	(800)	2 ½	

*XD* NDB to MAP 3.8 NM					
Knots	70	90	110	130	150
Min:Sec	<b>3:15</b>	<b>2:32</b>	<b>2:04</b>	<b>1:45</b>	<b>1:31</b>

**NDB RWY 16 (GNSS)**

N53 34 21 W113 31 14 VAR 17° E

EDMONTON AB

EFF 13 APR 06

CHANGE: GPS to GNSS; COMM

EDMONTON CITY CENTRE (BLATCHFORD FIELD)

NAD83

**LOC(BC)/DME RWY 16**

EDMONTON CITY CENTRE (BLATCHFORD FIELD)  
EDMONTON AB

<b>ATIS</b> 114.9 125.4	<b>ARR</b> 119.5 226.3	<b>TWR</b> 119.1 283.7 O/T RED DEER RDO 119.1 (MF 5 NM)	<b>GND</b> 121.9	<b>DEP</b> 119.5 226.3	<b>ELEV 2200</b> <b>TDZE 16 2191</b>
-------------------------------	------------------------------	---	---------------------	------------------------------	---

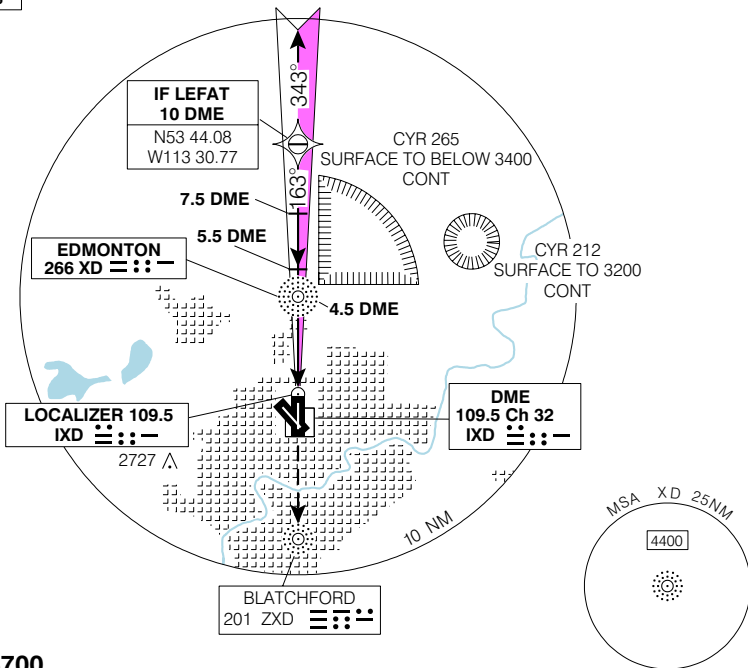
© 2006 Her Majesty The Queen in Right of Canada, Department of Natural Resources. All rights reserved

Source of Canadian Civil Aeronautical Data: © 2006 NAV CANADA. All rights reserved

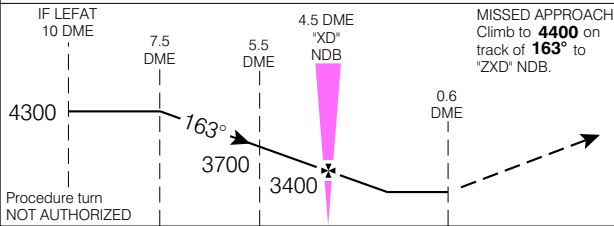
**BACK COURSE  
NO GLIDE PATH  
IGNORE GLIDE  
PATH INDICATIONS**

**RADAR or RNAV REQUIRED**

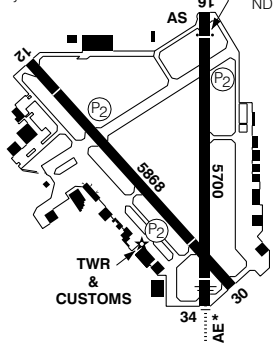
Localizer reliable only within 10° either side of rwy centreline to 15 DME of 'IXD'. LOC fluctuations may be experienced.



SAFE ALT 100 NM **6700**



ALL THRESHOLDS DISPLACED  
SEE AERODROME CHART  
Right hand circuits  
Rwys 30 and 34  
162° 3.8 NM From "XD" NDB



CATEGORY	A	B	C	D
LOC(BC)/DME	<b>2600</b>	(409)	1 ¼	
CIRCLING	<b>3000</b>	(800)	2 ½	

Knots	70	90	110	130	150
Min:Sec					

**LOC(BC)/DME RWY 16**

EFF 13 APR 06 CHANGE: COMM

N53 34 21 W113 31 14 VAR 17° E EDMONTON AB  
EDMONTON CITY CENTRE (BLATCHFORD FIELD)

NAD83

# LOC/DME RWY 34

EDMONTON CITY CENTRE (BLATCHFORD FIELD)

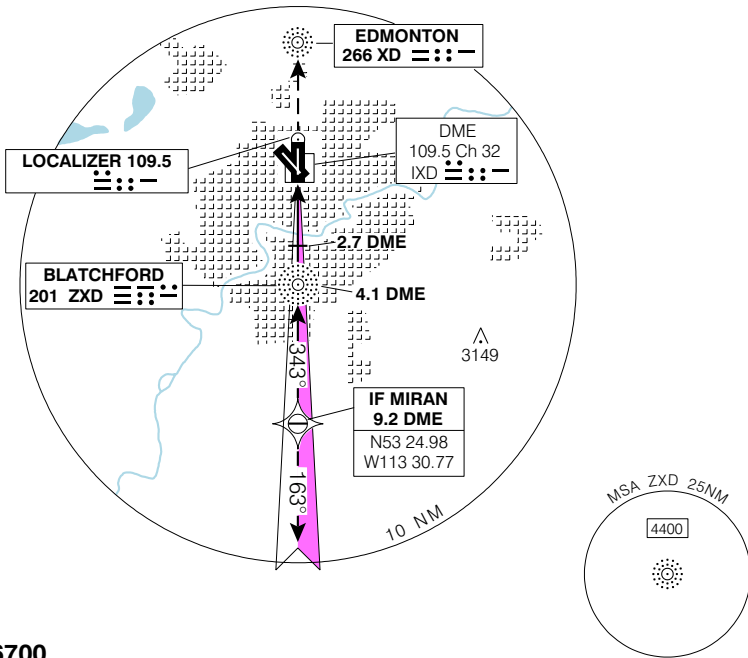
EDMONTON AB

<b>ATIS</b> 114.9 125.4	<b>ARR</b> 119.5 226.3	<b>TWR</b> 119.1 283.7 O/T RED DEER RDO 119.1 (MF 5 NM)	<b>GND</b> 121.9	<b>DEP</b> 119.5 226.3	<b>ELEV 2200</b> <b>TDZE 34 2187</b>
-------------------------------	------------------------------	---	---------------------	------------------------------	---

© 2006 Her Majesty The Queen in Right of Canada, Department of Natural Resources. All rights reserved

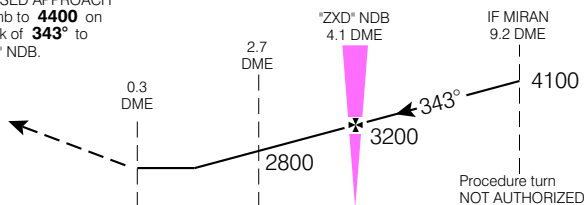
Localizer reliable only within 25° either side of rwy centreline.

**RADAR or RNAV REQUIRED**

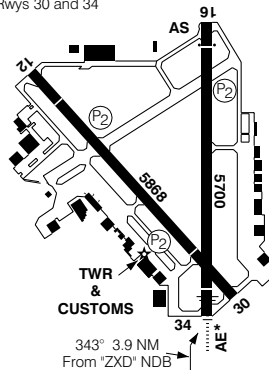


SAFE ALT 100 NM **6700**

**MISSED APPROACH**  
 Climb to **4400** on track of **343°** to "XD" NDB.



ALL THRESHOLDS DISPLACED  
 SEE AERODROME CHART  
 Right hand circuits  
 Rwy's 30 and 34



CATEGORY	A	B	C	D
LOC/DME	<b>2660</b>	(473)		1
CIRCLING	<b>3000</b>	(800)		2 ½

Knots	70	90	110	130	150
Min:Sec					

# LOC/DME RWY 34

EFF 13 APR 06 CHANGE: COMM

N53 34 21 W113 31 14 VAR 17° E EDMONTON AB

EDMONTON CITY CENTRE (BLATCHFORD FIELD)

NAD83

Source of Canadian Civil Aeronautical Data: © 2006 NAV CANADA. All rights reserved

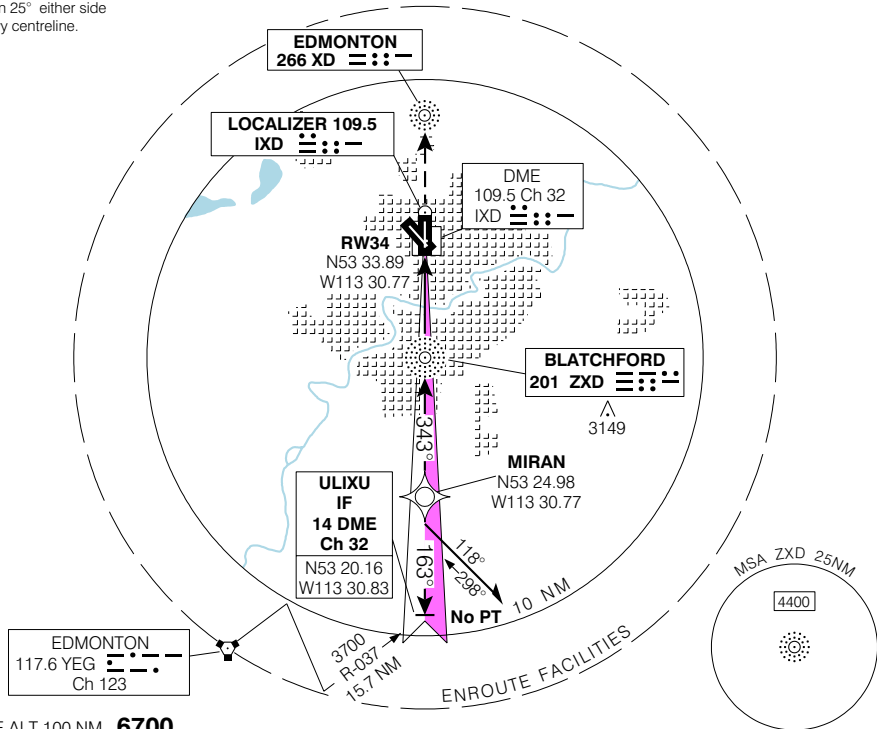
ILS or NDB RWY 34 (GNSS) EDMONTON CITY CENTRE (BLATCHFORD FIELD) EDMONTON AB

<p>● <b>ATIS</b> 114.9 125.4</p>	<p>● <b>ARR</b> 119.5 226.3</p>	<p>● <b>TWR</b> 119.1 283.7 O/T RED DEER RDO 119.1 (MF 5 NM)</p>	<p>● <b>GND</b> 121.9</p>	<p><b>DEP</b> 119.5 226.3</p>	<p><b>ELEV 2200</b> <b>TDZE 34 2187</b></p>
--	---	--	-------------------------------	---------------------------------------	---

© 2006 Her Majesty The Queen in Right of Canada, Department of Natural Resources. All rights reserved

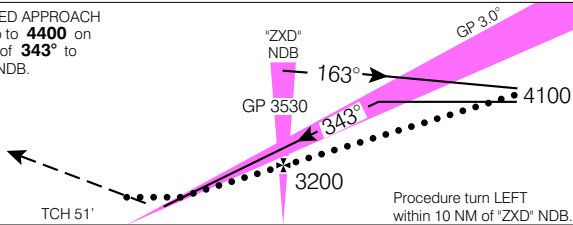
Localizer reliable only within 25° either side of rwy centreline.

CYXD

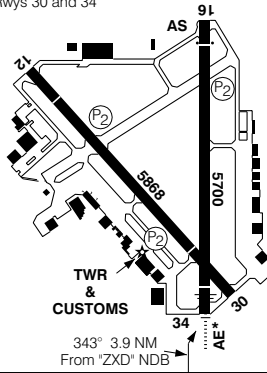


SAFE ALT 100 NM **6700**

MISSED APPROACH  
Climb to **4400** on track of **343°** to "XD" NDB.



ALL THRESHOLDS DISPLACED  
SEE AERODROME CHART  
Right hand circuits  
Rwys 30 and 34



CATEGORY	A	B	C	D
ILS	<b>2387</b>	(200)	½ RVR 26	
LOC	<b>2780</b>	(593)	1 ¼	
NDB	<b>3000</b>	(813)	2	
CIRCLING	<b>3000</b>	(800)	2 ½	

"ZXD" NDB to MAP 3.9 NM					
Knots	70	90	110	130	150
Min:Sec	<b>3:20</b>	<b>2:36</b>	<b>2:08</b>	<b>1:48</b>	<b>1:34</b>

ILS or NDB RWY 34 (GNSS) EDMONTON CITY CENTRE (BLATCHFORD FIELD) EDMONTON AB

EFF 13 APR 06 CHANGE: GPS to GNSS; COMM

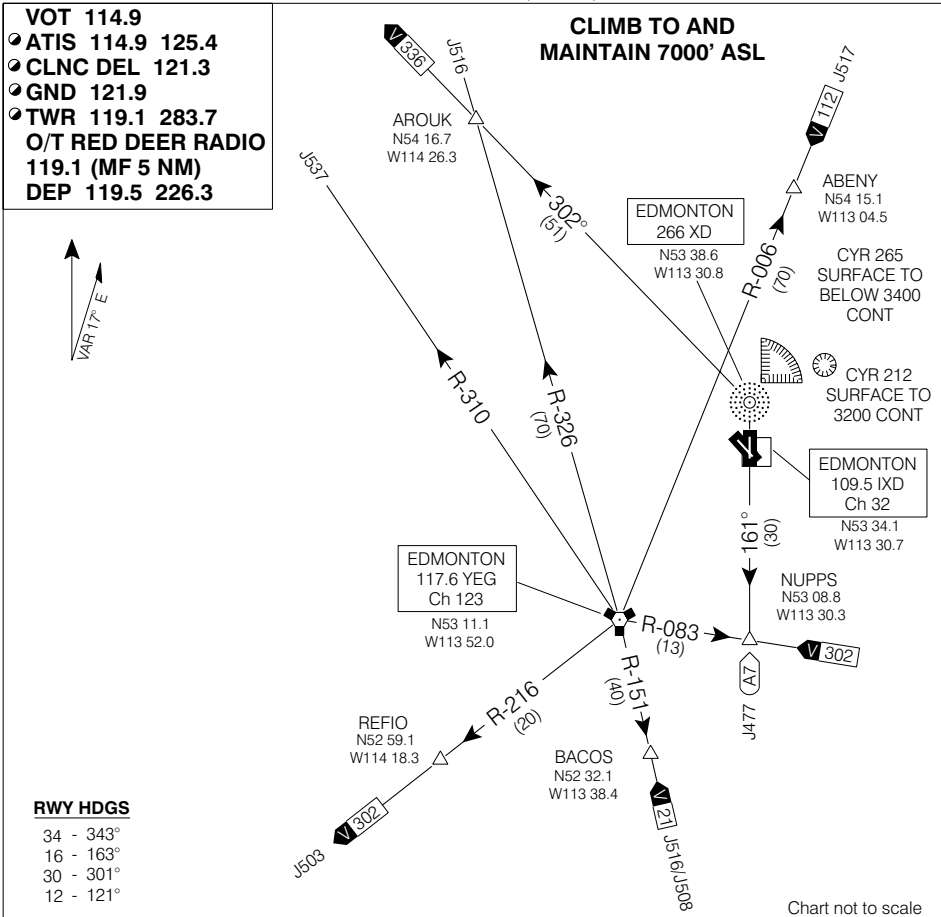
Source of Canadian Civil Aeronautical Data: © 2006 NAV CANADA. All rights reserved

SID (VECTOR)

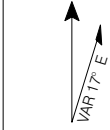
EDMONTON CITY CENTRE  
(BLATCHFORD FIELD)

**EDMONTON CITY THREE DEP** (CYXD 3.)

EDMONTON AB



VOT 114.9  
 ATIS 114.9 125.4  
 CLNC DEL 121.3  
 GND 121.9  
 TWR 119.1 283.7  
 O/T RED DEER RADIO  
 119.1 (MF 5 NM)  
 DEP 119.5 226.3



**RWY HDGS**  
 34 - 343°  
 16 - 163°  
 30 - 301°  
 12 - 121°

**DEPARTURE ROUTE DESCRIPTION**

- \* **ALL RUNWAYS:** 1. Climb **rwyt hdg** for vectors to assigned route or depicted fix.  
 2. Maintain **7000'** ASL or flight planned altitude, whichever is lower.
- \* **Rwy 12:** Requires a minimum CLB gradient of **370 ft/NM** to **2800'** ASL.
- \* **Rwy 16:** Requires a minimum CLB gradient of **220 ft/NM** to **2800'** ASL.
- \* **Rwy 30:** Requires a minimum CLB gradient of **310 ft/NM** to **2500'** ASL.

NOTE: Refer to Noise Abatement Procedures for additional requirements.

**COMMUNICATION FAILURE**

On recognition of failure 10 minutes or less after take-off and in IFR weather conditions, proceed as follows:

1. Transponder 7600;
2. Upon reaching last assigned altitude proceed directly on course;
3. Maintain last assigned altitude for 10 minutes after take-off; then,
4. Climb to flight planned altitude.

NOTE: If communication failure occurs more than 10 minutes after take-off, comply with the appropriate procedure for communication failure enroute.

**EDMONTON CITY THREE DEP** (CYXD 3.)

EDMONTON AB  
 EDMONTON CITY CENTRE  
 (BLATCHFORD FIELD)

EFF 13 APR 06 CHANGE: COMM

NAD83

© 2006 Her Majesty The Queen in Right of Canada, Department of Natural Resources All rights reserved. Source of Canadian Civil Aeronautical Data: © 2006 NAV CANADA All rights reserved.

**NOISE ABATEMENT PROCEDURES****RESTRICTIONS**

Some aircraft operations are restricted between the hours of 2200-0700 local time. Permission to operate, during restricted hours is given to those aircraft which meet Airport noise limits. Telephone (780) 477-2442. Aircraft engine run-ups (except those done as part of pre-take-off procedures) shall not be done between 2200 - 0700 local time.

**PREFERENTIAL RUNWAY DETERMINATION**

1. Consistent with safe operating procedures, ATC will assign runways to ensure that as many departures and arrivals as possible avoid flight over noise sensitive areas adjacent to the airport.
2. The order of preference is:

## DEPARTURES

- a) 30
- b) 34
- c) 16
- d) 12

## ARRIVALS

- a) 12
- b) 16
- c) 30
- d) 34

3. All aircraft operators shall use runways 12 and 30 as the preferential runways for take-off and landings between 0000 - 0600 local time except when air traffic, wind, weather or runway conditions require use of a less-preferred runway in the interest of safety.

**DEPARTURE PROCEDURES**

IFR aircraft shall climb on runway heading to 3200' ASL before proceeding on course (4500' ASL for turbo jet aircraft except 4000' ASL for Rwy 30).

RWY	VNAP
ALL RWYS	A or B

**ARRIVAL PROCEDURES**

IFR aircraft shall not descend below 3200' ASL until established on glide path or VASIS (4500' for turbo jet aircraft), circling procedures excepted. ATC may on occasion clear aircraft for unrestricted descent providing the above stated altitudes are maintained.

Note: When executing an IFR or visual approach to Runway 16, do not descend below 3400' ASL until by the "XD" NDB inbound to the airport.

**NOISE ABATEMENT PROCEDURES**

EDMONTON ALBERTA

EFF 30 NOV 00 CHANGE: Restrictions &amp; Preferential rwy info

EDMONTON CITY CENTRE (BLATCHFORD FIELD)

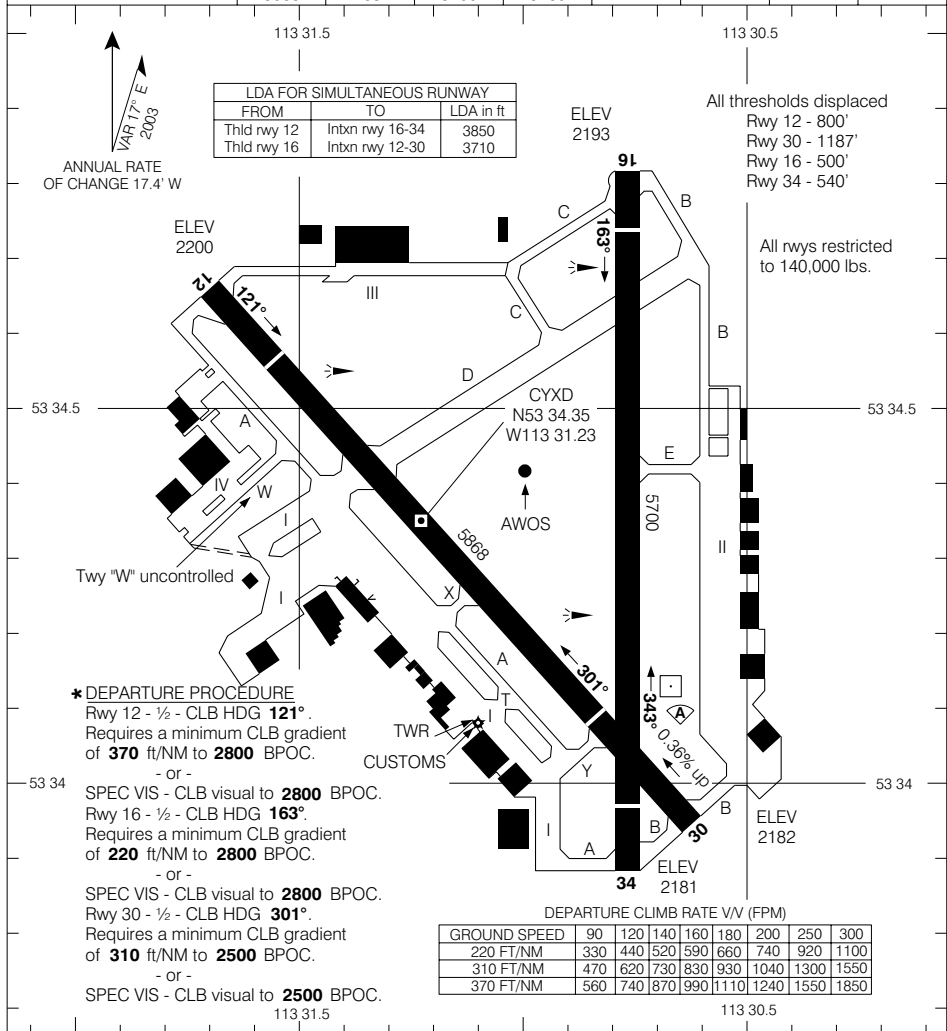
EDMONTON CITY CENTRE (BLATCHFORD FIELD)

EDMONTON AB

AERODROME CHART

<b>AWOS</b> 128.625	<b>VOT</b> 114.9	<b>ATIS</b> 114.9 125.4	<b>CLNC DEL</b> 121.3	<b>GND</b> 121.9	<b>TWR</b> 119.1 283.7 O/T RED DEER RDO 119.1 (MF 5 NM)	<b>DEP</b> 119.5 226.3
------------------------	---------------------	-------------------------------	--------------------------	---------------------	---	------------------------------

DECLARED DISTANCES		12	30	16	34				
TORA		5868	5868	5700	5700				
TODA		5868	6068	6160	6200				
ASDA		5868	5868	5700	5700				
LDA		5068	4681	5200	5160				



<b>TAKE-OFF MINIMA</b> Rwy 34: 1/2 Rwys 12, 16, 30: *	<b>SCALE IN FEET</b> 1000 0 1000
---	-------------------------------------

© 2006 Her Majesty The Queen in Right of Canada, Department of Natural Resources. All rights reserved. Source of Canadian Civil Aeronautical Data: © 2006 NAV CANADA. All rights reserved.