

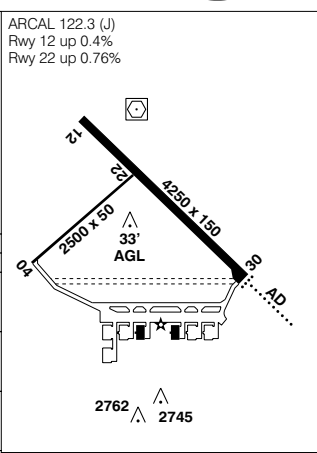
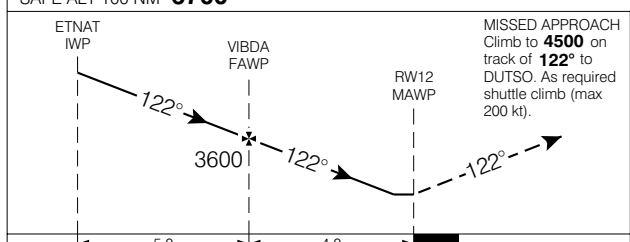
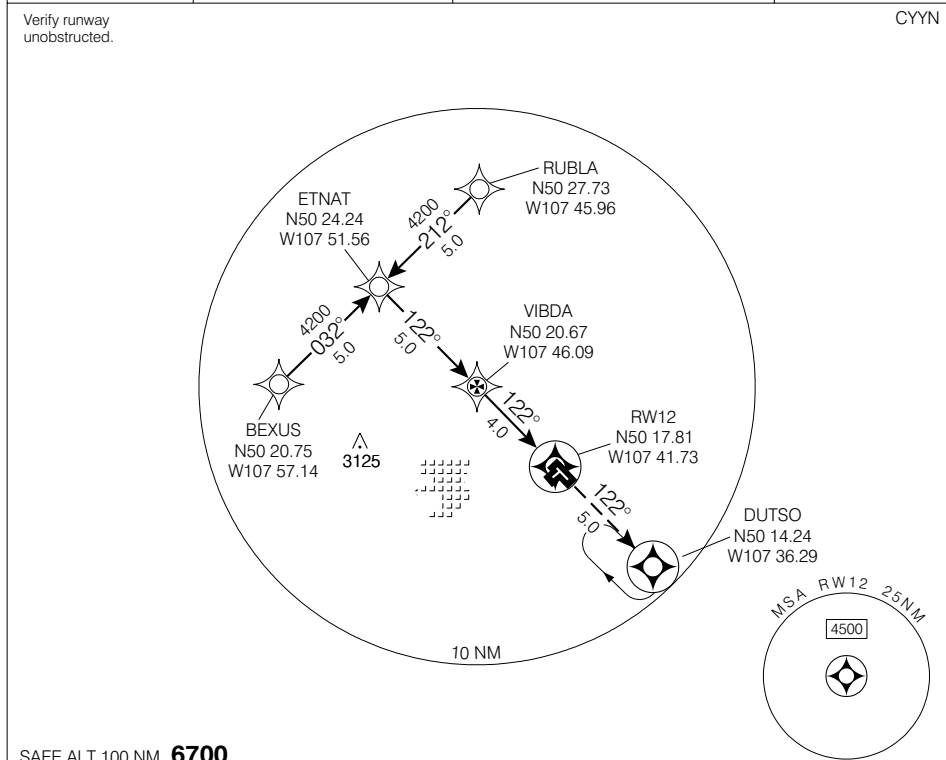
RNAV (GNSS) RWY 12

SWIFT CURRENT
SWIFT CURRENT SK

AWOS 124.7	ARR / DEP WINNIPEG CENTRE 132.8 232.3	TFC 122.3 (MF 5 NM)	ELEV 2680
			TDZE 12 2661

© 2006 Her Majesty The Queen in Right of Canada, Department of Natural Resources. All rights reserved

Source of Canadian Civil Aeronautical Data: © 2006 NAV CANADA. All rights reserved



CATEGORY	A B C D			
LNAV / VNAV	NOT AUTHORIZED			
LNAV	3020	(359)	1 ¼	
CIRCLING	3180	(500) 1 ½	3180	3280
			(500) 2	(600) 2

Knots	70	90	110	130	150
Min:Sec					

RNAV (GNSS) RWY 12

N50 17.31 W107 41.26 VAR 14° E (2001)

SWIFT CURRENT SK
SWIFT CURRENT

EFF 13 APR 06

CHANGE: GPS to GNSS

NAD83

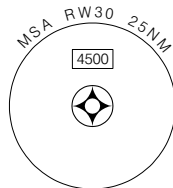
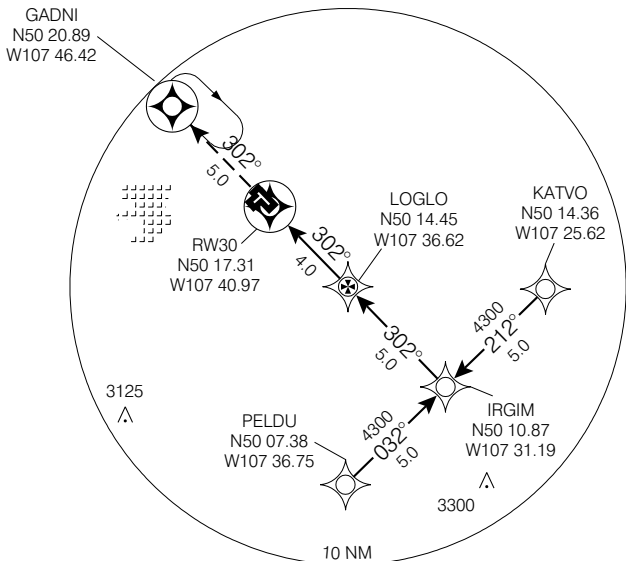
RNAV (GNSS) RWY 30

SWIFT CURRENT
SWIFT CURRENT SK

AWOS 124.7	ARR / DEP WINNIPEG CENTRE 132.8 232.3	TFC 122.3 (MF 5 NM)	ELEV 2680
			TDZE 30 2667

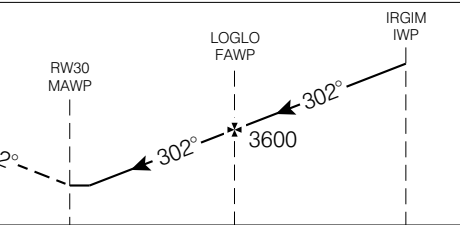
Verify runway unobstructed.

CYYN

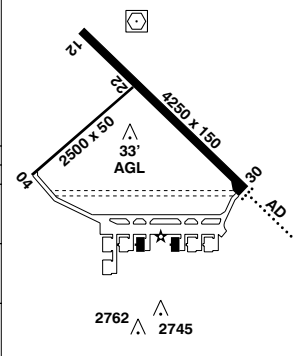


SAFE ALT 100 NM **6700**

MISSED APPROACH
Climb to **4500** on track of **302°** to GADNI. As required shuttle climb (max 200 kt).



ARCAL 122.3 (J)
Rwy 30 down 0.4%
Rwy 22 up 0.76%



CATEGORY	A	B	C	D
LNAV / VNAV	NOT AUTHORIZED			
LNAV	3040	(373)	1 ¼	
CIRCLING	3180	(500) 1 ½	3180	3280
			(500) 2	(600) 2

Knots	70	90	110	130	150
Min:Sec					

RNAV (GNSS) RWY 30

N50 17 31 W107 41 26

VAR 14° E
(2001)

SWIFT CURRENT SK
SWIFT CURRENT

EFF 13 APR 06

CHANGE: GPS to GNSS

NAD83



Geomatics Canada

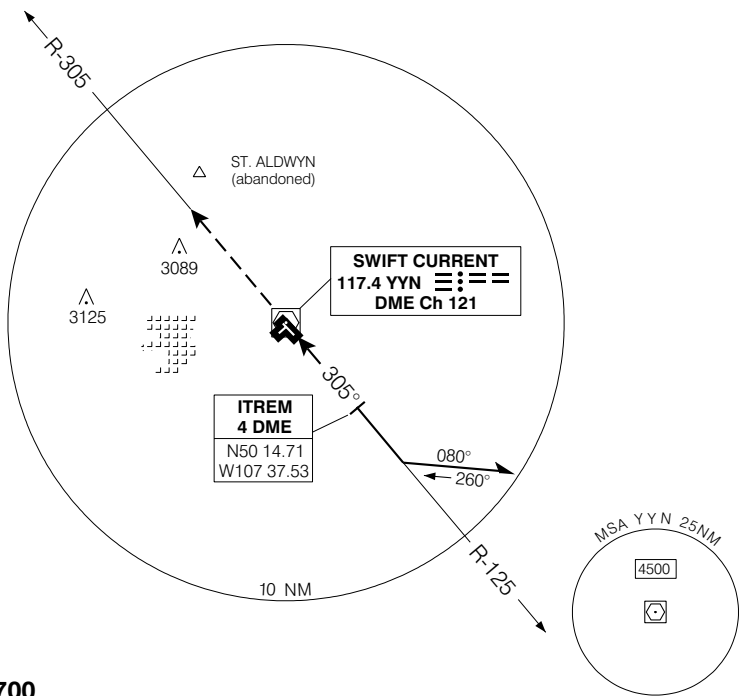
SWIFT CURRENT
SWIFT CURRENT SK

VOR RWY 30

AWOS 124.7	ARR / DEP WINNIPEG CENTRE 132.8 232.3	TFC 122.3 (MF 5 NM)	ELEV 2680
			TDZE 30 2667

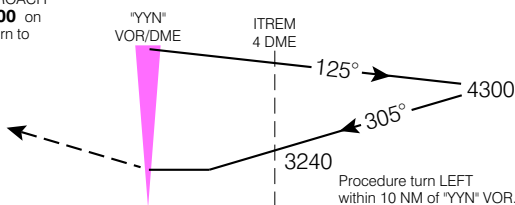
Verify runway unobstructed.

CYYN

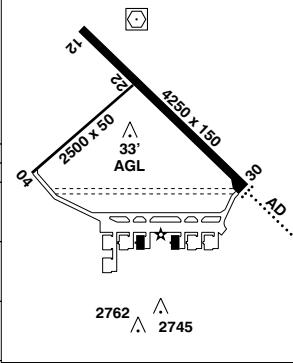


SAFE ALT 100 NM **6700**

MISSED APPROACH
Climb to **4300** on
R-305. Return to
"YYN" VOR.



ARCAL 122.3 (J)
Rwy 30 down 0.4%
Rwy 22 up 0.76%



CATEGORY	A	B	C	D
VOR/DME	3040	(373)	1 ¼	
VOR	3240	(573)	1¼	
CIRCLING	3240	(560) 1¼	3240	3300
			(560) 2	(620) 2

Knots	70	90	110	130	150
Min:Sec					

VOR RWY 30

N50 17.31 W107 41.26

VAR 13° E

SWIFT CURRENT SK
SWIFT CURRENT

EFF 1 SEP 05

CHANGE: Profile view;
Landing chart

NAD83



VOR/DME RWY 12

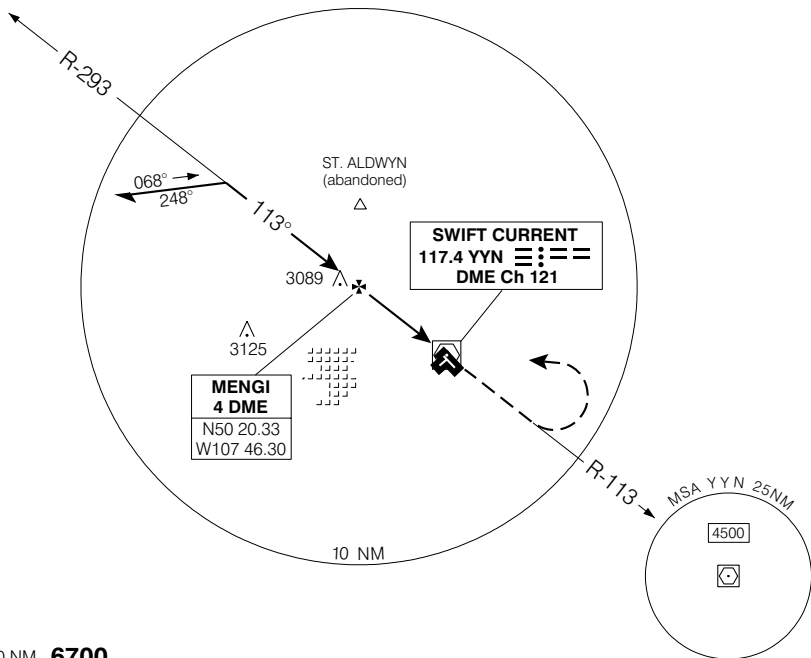
Geomatics Canada

SWIFT CURRENT
SWIFT CURRENT SK

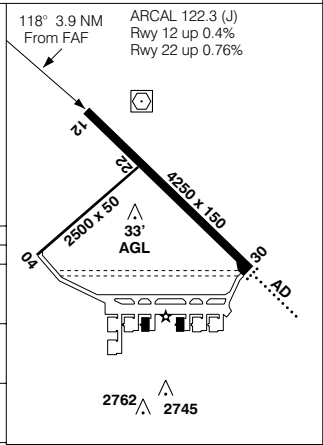
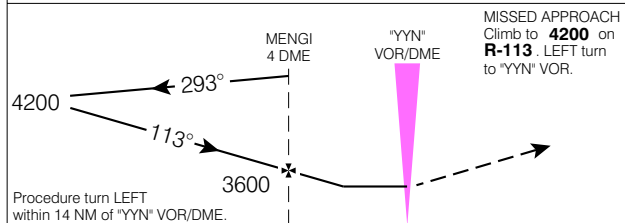
AWOS 124.7	ARR / DEP WINNIPEG CENTRE 132.8 232.3	TFC 122.3 (MF 5 NM)	ELEV 2680
			TDZE 12 2661

Verify runway unobstructed.

CYYN



SAFE ALT 100 NM **6700**



CATEGORY	A	B	C	D
VOR/DME	3020	(359)	1 ¼	
CIRCLING	3180	(500) 1 ½	3180	3280
			(500) 2	(600) 2

Knots	70	90	110	130	150
Min:Sec					

VOR/DME RWY 12

N50 17 31 W107 41 26 VAR 13° E

SWIFT CURRENT SK

EFF 1 SEP 05 CHANGE: Landing chart

SWIFT CURRENT

NAD83



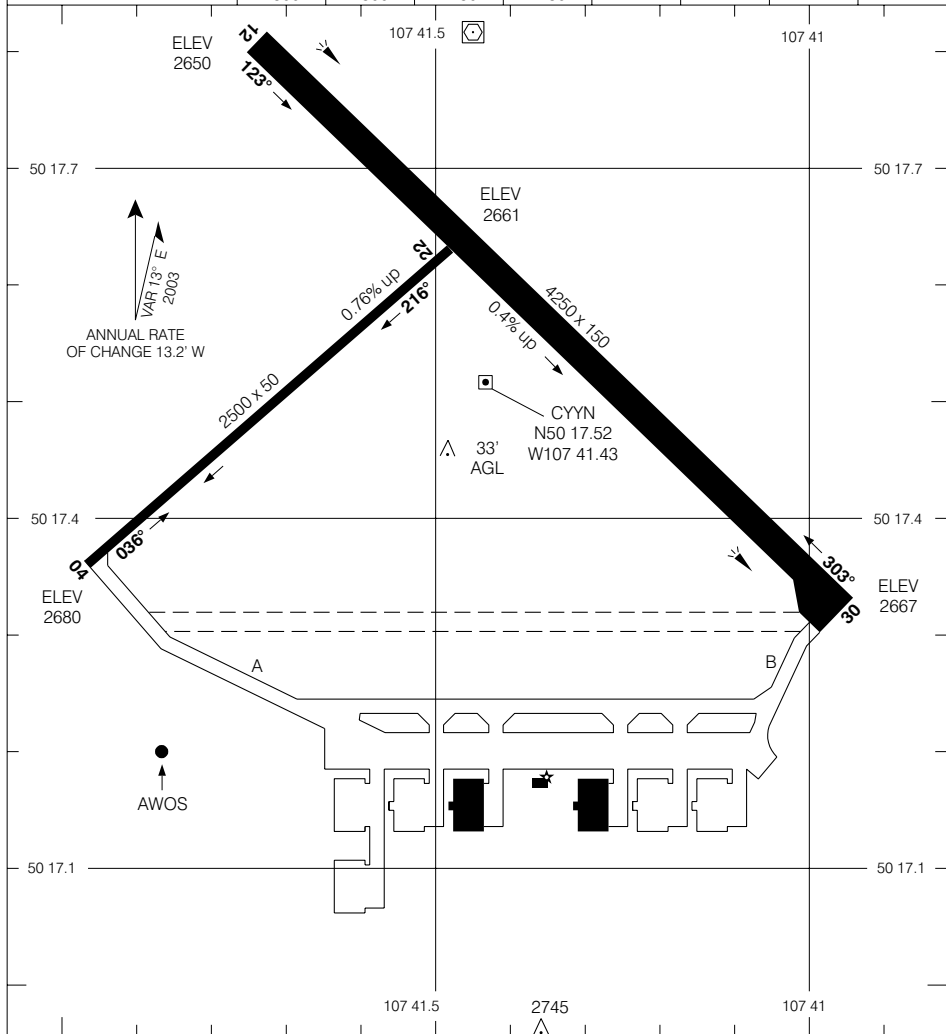
Geomatics Canada

SWIFT CURRENT
SWIFT CURRENT SK

AERODROME CHART

AWOS 124.7	TFC 122.3 (MF 5 NM)		DEP WINNIPEG CENTRE 132.8 232.3	
----------------------	----------------------------------	--	---	--

DECLARED DISTANCES	04	22	12	30				
	TORA	2500	2500	4250	4250			
TODA	2500	2500	4250	4250				
ASDA	2500	2500	4250	4250				
LDA	2500	2500	4250	4250				



TAKE-OFF MINIMA	SCALE IN FEET
Rwys 12, 30: 1/2 Rwys 04, 22: NOT ASSESSED	1000 0 1000

AERODROME CHART CHANGE: Editorial SWIFT CURRENT SK SWIFT CURRENT NAD83

© 2005 Her Majesty The Queen in Right of Canada, Department of Natural Resources

Source of Canadian Civil Aeronautical Data © 2005 NAV CANADA