

RNAV (GNSS) RWY 15

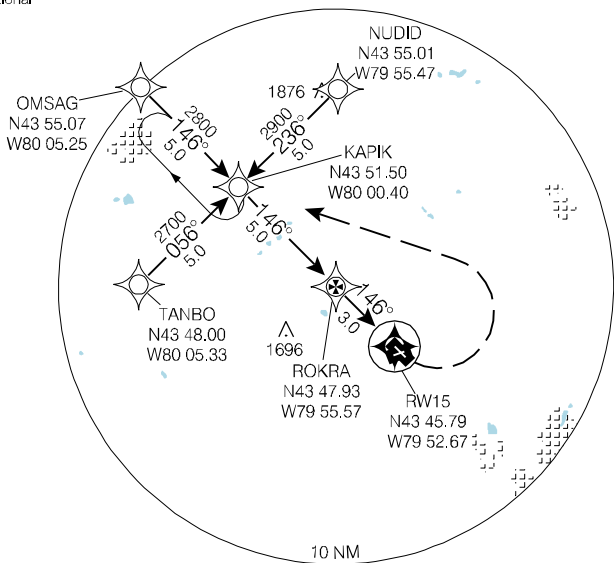
ARR TORONTO TML 119.3 253.1	UNICOM 123.3 (ATF 5 NM) O/T TFC 123.3	DEP TORONTO TML 119.3 253.1	ELEV 935
			TDZE 15 935

Use Toronto/Lester B. Pearson
altimeter setting.

Verify runway unobstructed.

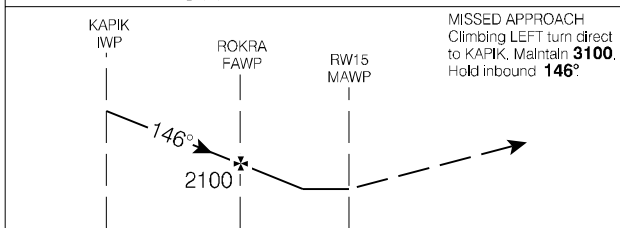
See CFS for operational
restrictions.

CNC3



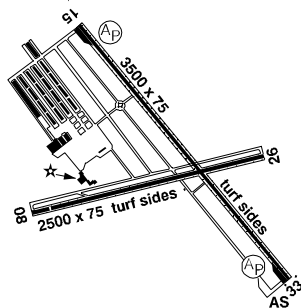
ARCAL 123.3 (K)

SAFE ALT 100 NM **4900**



MISSED APPROACH
 Climbing LEFT turn direct
 to KAPIK. Maintain **3100**.
 Hold inbound **146°**

ARCAL 123.3 (K).
 Rwy 15/33 40' asphalt centre.
 Rwy 08/26 40' asphalt centre.
 Thld 08 displaced 191'.



CATEGORY	A	B	C	D
LNAV / VNAV	NOT AUTHORIZED			
LNAV	1540	(605)	1 3/4	NOT AUTH
CIRCLING	1540	(605)	1 3/4	1540
			(605)	2

Knots	70	90	110	130	150
Min:Sec					

RNAV (GNSS) RWY 15

434537N 795230W

VAR 10° W (2001)

BRAMPTON ON
BRAMPTON

VOR/DME A (GNSS)

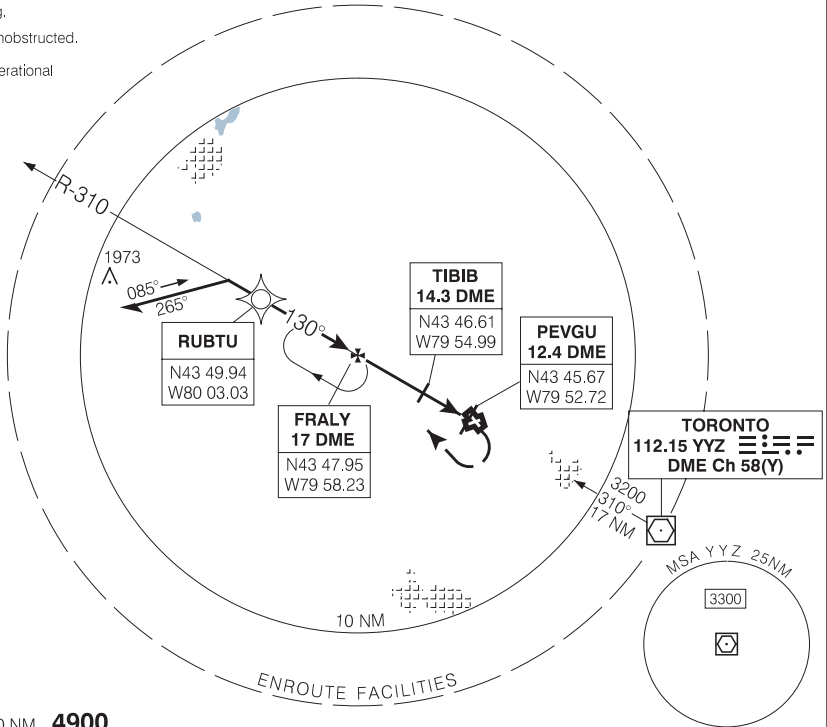
ARR TORONTO TML 119.3 253.1	UNICOM 123.3 (ATF 5 NM) O/T TFC 123.3	DEP TORONTO TML 119.3 253.1	ELEV 935
-----------------------------------	---	-----------------------------------	----------

Use Toronto/Lester B. Pearson altimeter setting.

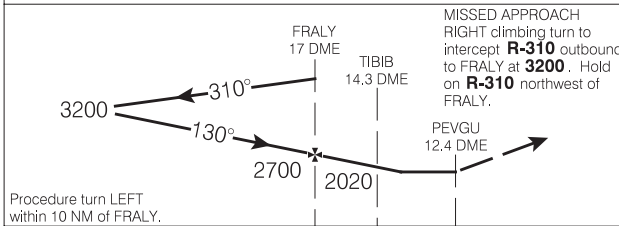
Verify runway unobstructed.

See CFS for operational restrictions.

CNC3

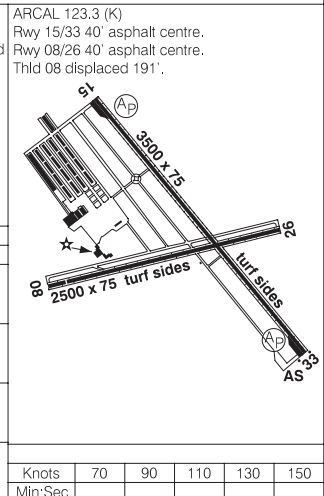


SAFE ALT 100 NM **4900**



Procedure turn LEFT within 10 NM of FRALY.

CATEGORY	A	B	C	D
CIRCLING	1440	(505) 1 1/2	NOT AUTHORIZED	
Knots: 70, 90, 110, 130, 150				
Min:Sec				



Source of Canadian Civil Aeronautical Data : © 2009 NAV CANADA All rights reserved

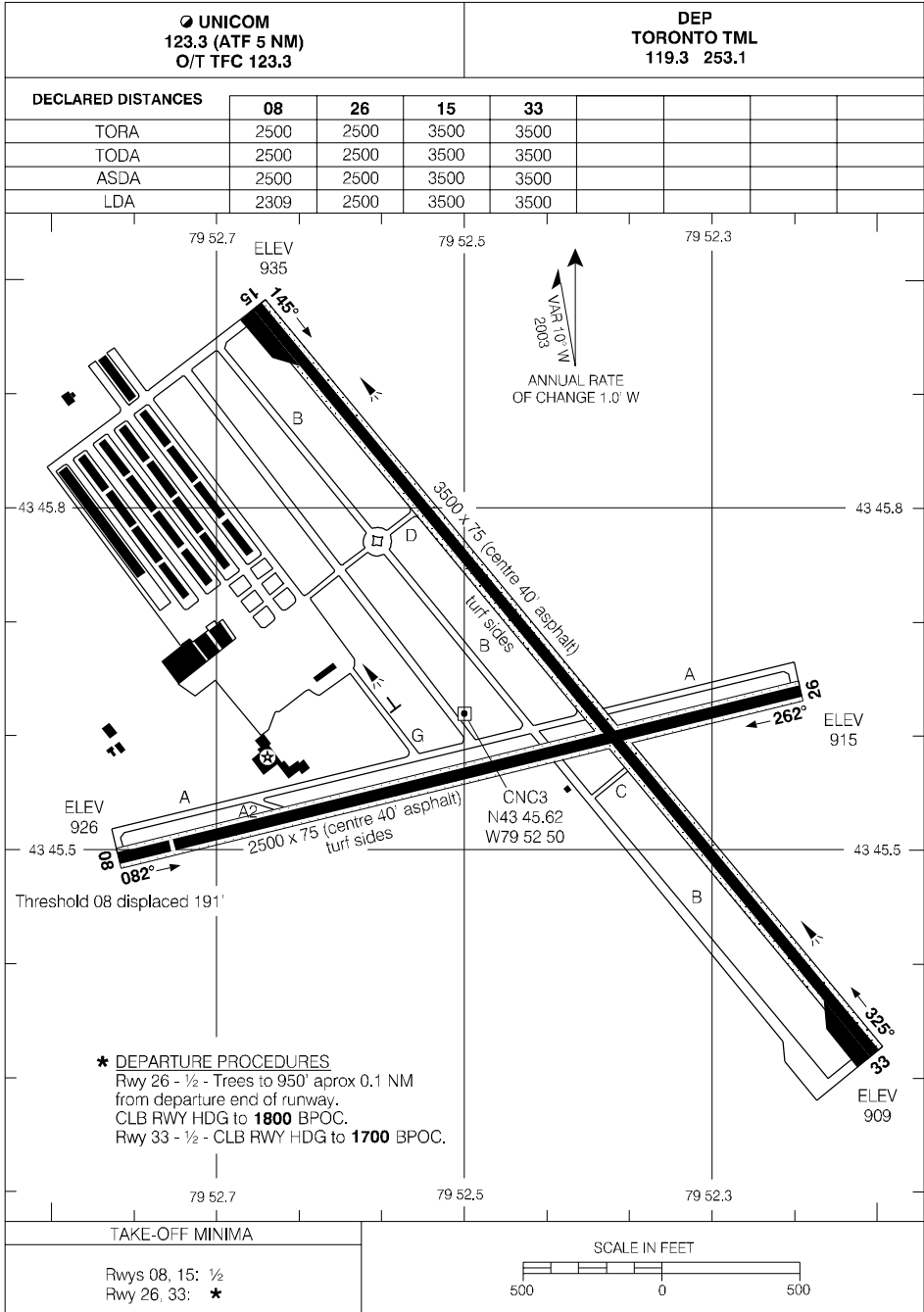
VOR/DME A (GNSS)

434537N 795230W

VAR 10°W

BRAMPTON ON
BRAMPTON

AERODROME CHART



Source of Canadian Civil Aeronautical Data : © 2009 NAV CANADA All rights reserved

AERODROME CHART