

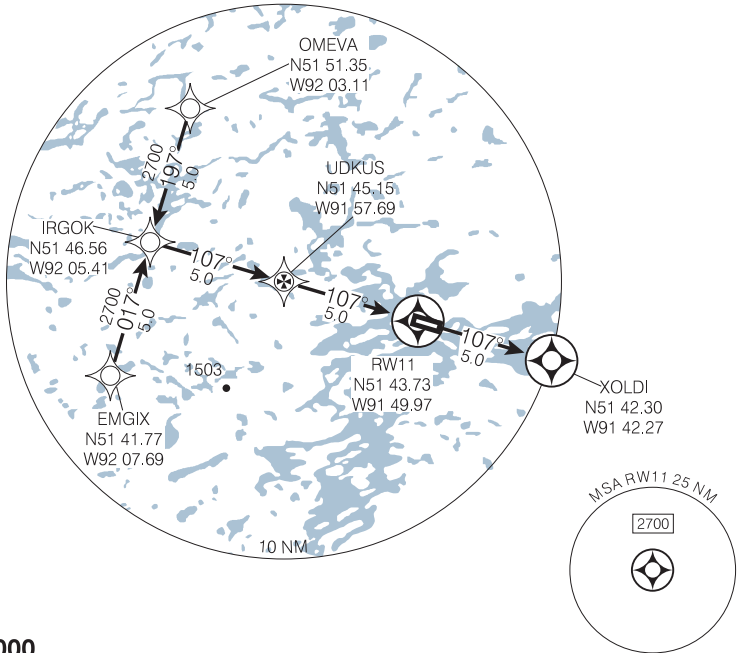
RNAV (GNSS) RWY 11

<p>NO CTL-BCST INTENTIONS ON 126.7 WITHIN 15 MIN OF ETA AND PRIOR TO DESCENT, THEN ON ATF 5 MIN PRIOR TO COMMENCING APCH.</p>	<p>TFC 123.2 (ATF 5 NM)</p>	<p>ELEV 1344</p>
		<p>TDZE 11 1343</p>

Use Pickle Lake altimeter setting.

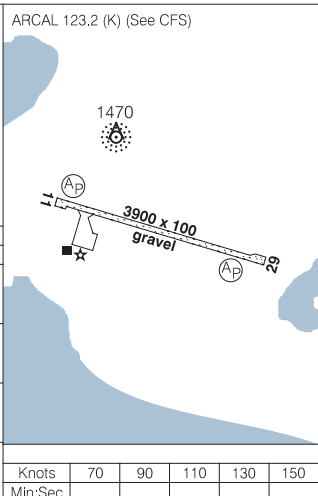
Verify runway unobstructed.

CYAC



SAFE ALT 100 NM **3000**

	IRGOK IWP	UDKUS FAWP	RW11 MAWP	MISSED APPROACH Climb to 2600 on track of 107° to XOLDI.	
	107°		107°		
	5.0		5.0		
CATEGORY	A	B	C	D	
LNAV / VNAV	NOT AUTHORIZED				
LNAV	1880		(537)	1 3/4	
CIRCLING	1920	(576)	1 3/4	1920	(576) 2
				1960	(616) 2



Knots	70	90	110	130	150
Min:Sec					

RNAV (GNSS) RWY 11

514338N 914928W

VAR 1° W (1999)

CAT LAKE ON
CAT LAKE

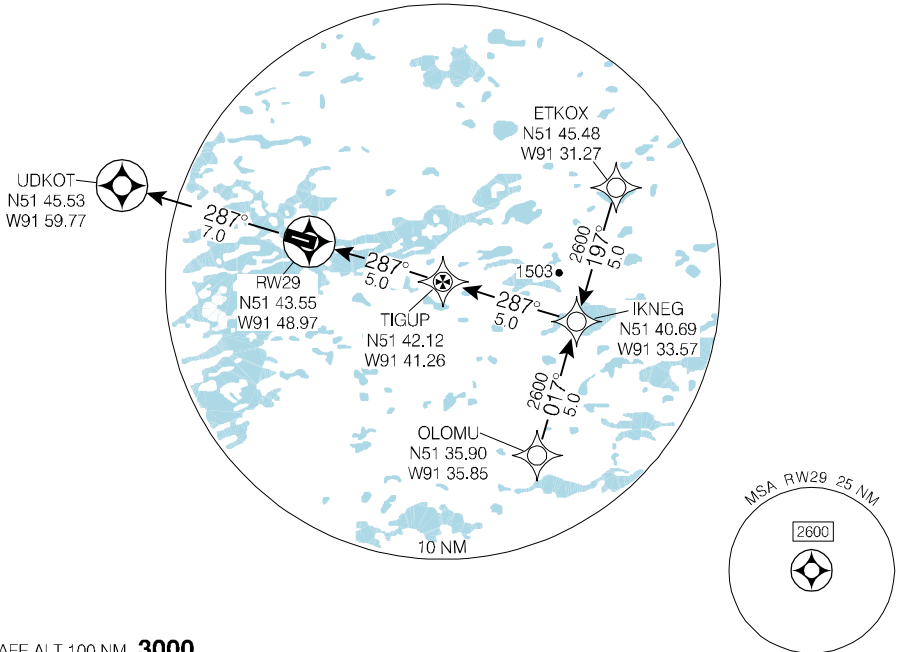
RNAV (GNSS) RWY 29

<p>NO CTL-BCST INTENTIONS ON 126.7 WITHIN 15 MIN OF ETA AND PRIOR TO DESCENT, THEN ON ATF 5 MIN PRIOR TO COMMENCING APCH.</p>	<p>TFC 123.2 (ATF 5 NM)</p>	<p>ELEV 1344</p>
		<p>TDZE 29 1343</p>

Use Picicle Lake altimeter setting.

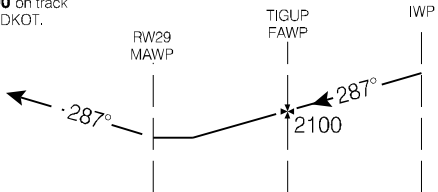
Verify runway unobstructed.

CYAC

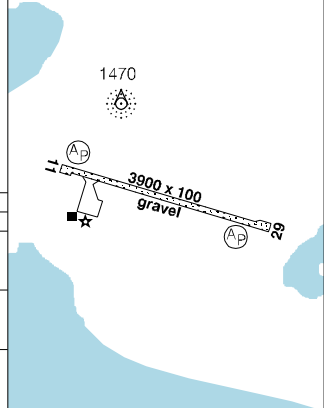


SAFE ALT 100 NM **3000**

MISSED APPROACH
Climb to **2600** on track of **287°** to UDKOT.



ARCAL 123.2 (K) (See CFS)



CATEGORY	A	B	C	D
LNAV / VNAV	NOT AUTHORIZED			
LNAV	1880	(537)	1 3/4	
CIRCLING	1920 (576) 1 3/4	1920 (576) 2	1960 (616) 2	

Knots	70	90	110	130	150
Min:Sec					

RNAV (GNSS) RWY 29

514338N 914928W

VAR 1° W (1999)

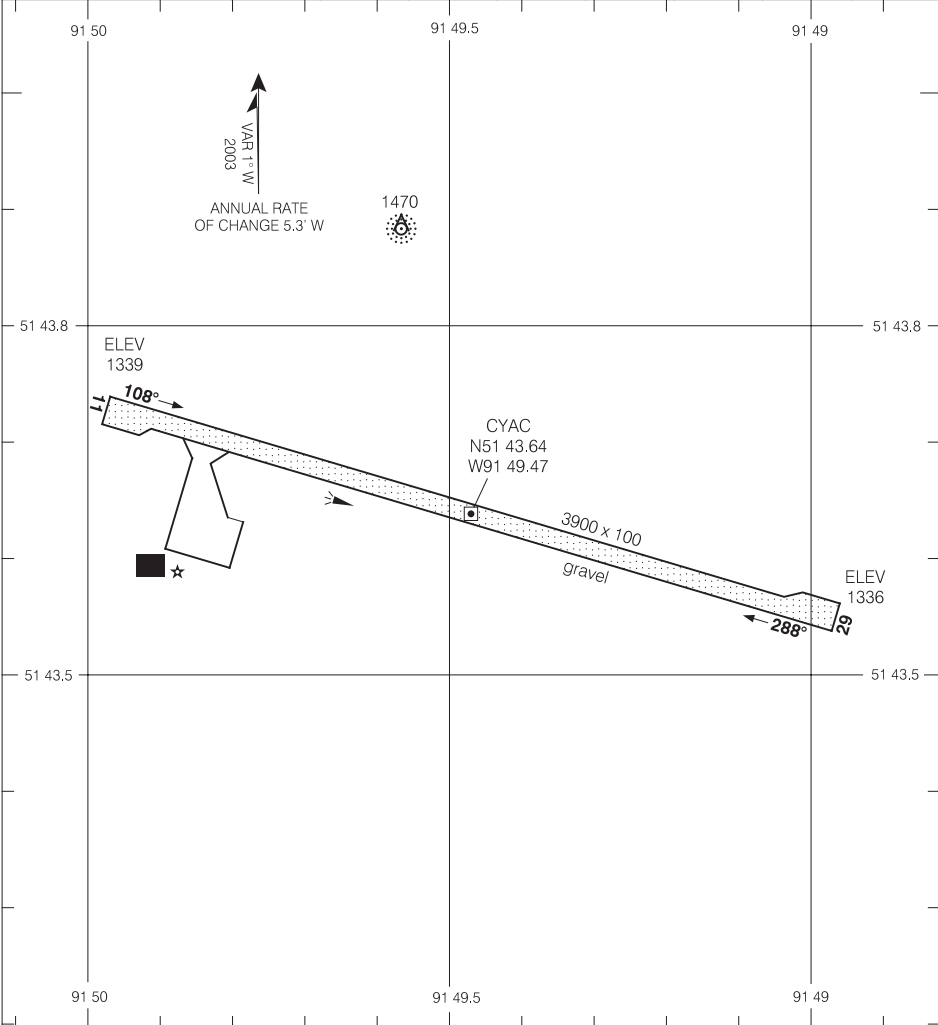
CAT LAKE ON
CAT LAKE

AERODROME CHART

TFC
123.2 (ATF 5 NM)

DECLARED DISTANCES

	11	29					
TORA	3900	3900					
TODA	3900	3900					
ASDA	3900	3900					
LDA	3900	3900					



Source of Canadian Civil Aeronautical Data : © 2009 NAV CANADA All rights reserved

TAKE-OFF MINIMA

NOT ASSESSED



AERODROME CHART