

NDB RWY 04 (GNSS)

UNICOM (AU)
122.8 (ATF 5 NM)
O/T TFC 122.8

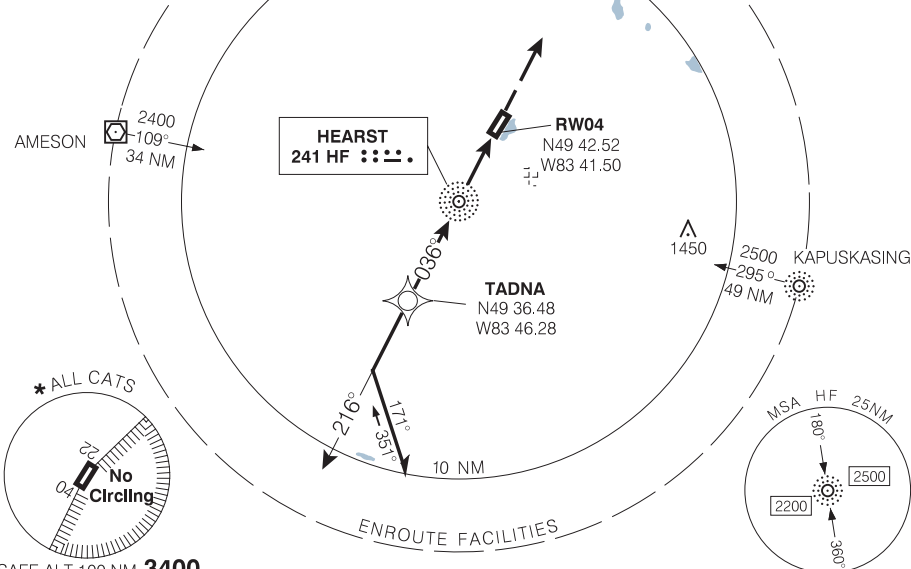
ELEV 827
TDZE 04 826

When using Kapuskasing altimeter setting add **240'** to all procedure altitudes.

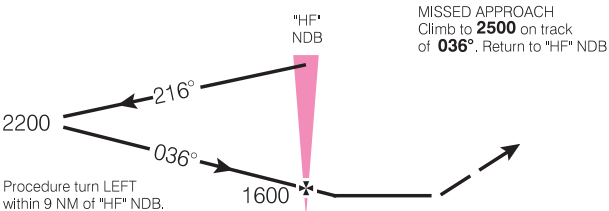
CYHF

Verify runway unobstructed when A/G advisory not available.

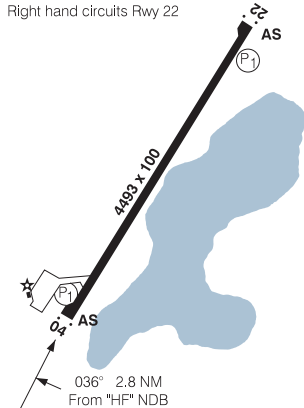
Aerodrome assessed for aircraft wingspans less than 118'.



SAFE ALT 100 NM 3400



ARCAL 122.8(K)
Right hand circuits Rwy 22



CATEGORY	A	B	C	D
NDB	1360	(534)	1 3/4	
* CIRCLING	1360 (533) 1 3/4	1400 (573) 1 3/4	1400 (573) 2	NOT AUTH

"HF" NDB to MAP 2.8 NM					
Knots	70	90	110	130	150
Min:Sec	2:24	1:52	1:32	1:18	1:07

NDB RWY 04 (GNSS)

494250N 834113W VAR 9°W

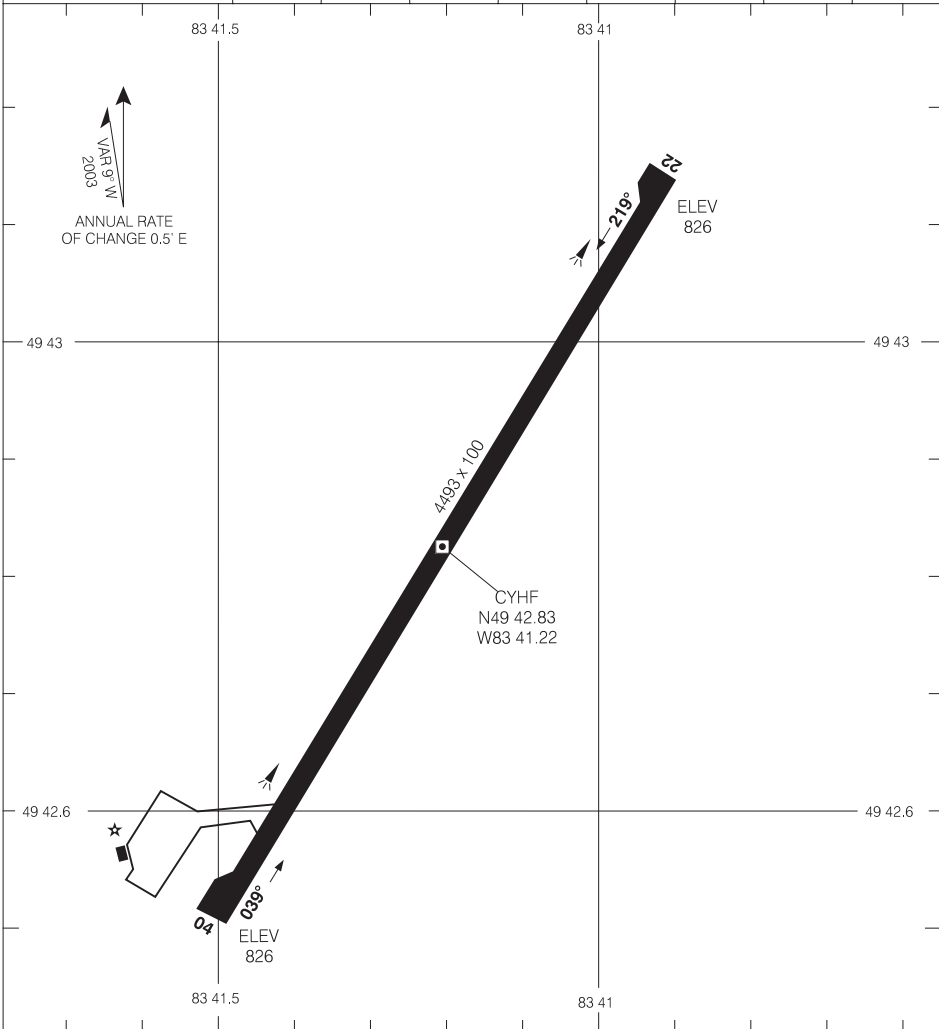
HEARST (RENE FONTAINE) MUNI
NAD83

AERODROME CHART

● UNICOM (AU)
122.8 (ATF 5 NM)
O/T TFC 122.8

DECLARED DISTANCES

	04	22					
TORA	4493	4493					
TODA	4493	4493					
ASDA	4493	4493					
LDA	4493	4493					



Source of Canadian Civil Aeronautical Data : © 2009 NAV CANADA All rights reserved

TAKE-OFF MINIMA

Rwys 04, 22: ½



AERODROME CHART