

NDB A

NO CTL-BCST INTENTIONS ON 126.7 WITHIN 15 MIN OF ETA AND PRIOR TO DESCENT, THEN ON ATF 5 MIN PRIOR TO COMMENCING APCH

**UNICOM (AU)
122.8 (ATF 5 NM)
O/T TFC 122.8**

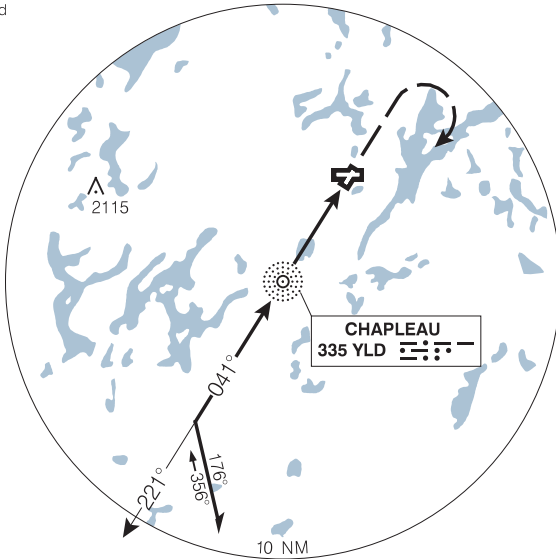
ELEV 1470

CYLD

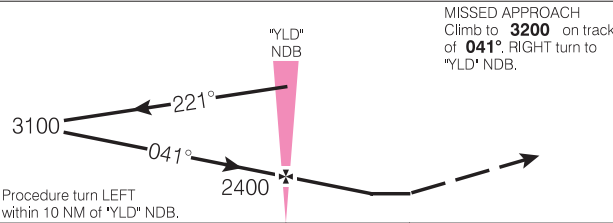
Altimeter setting available limited hours.

When using Wawa altimeter, add **210'** to all procedure altitudes.

Verify runway unobstructed when A/G advisory not available.



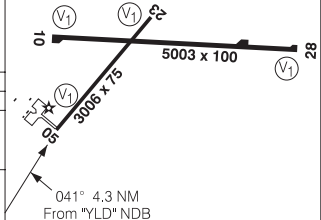
SAFE ALT 100 NM **3400**



Procedure turn LEFT within 10 NM of "YLD" NDB.

MISSED APPROACH
Climb to **3200** on track of **041°**. RIGHT turn to "YLD" NDB.

ARCAL 122.8 (see CFS)
Rwy 23 up 0.43%
Rwy 28 first 3350' up 1.47%



CATEGORY	A		B		C		D	
CIRCLING	2000	(530)	1	3/4	2000	(530)	2	2140

"YLD" NDB to MAP 4.3 NM					
Knots	70	90	110	130	150
Min:Sec	3:41	2:52	2:21	1:59	1:43

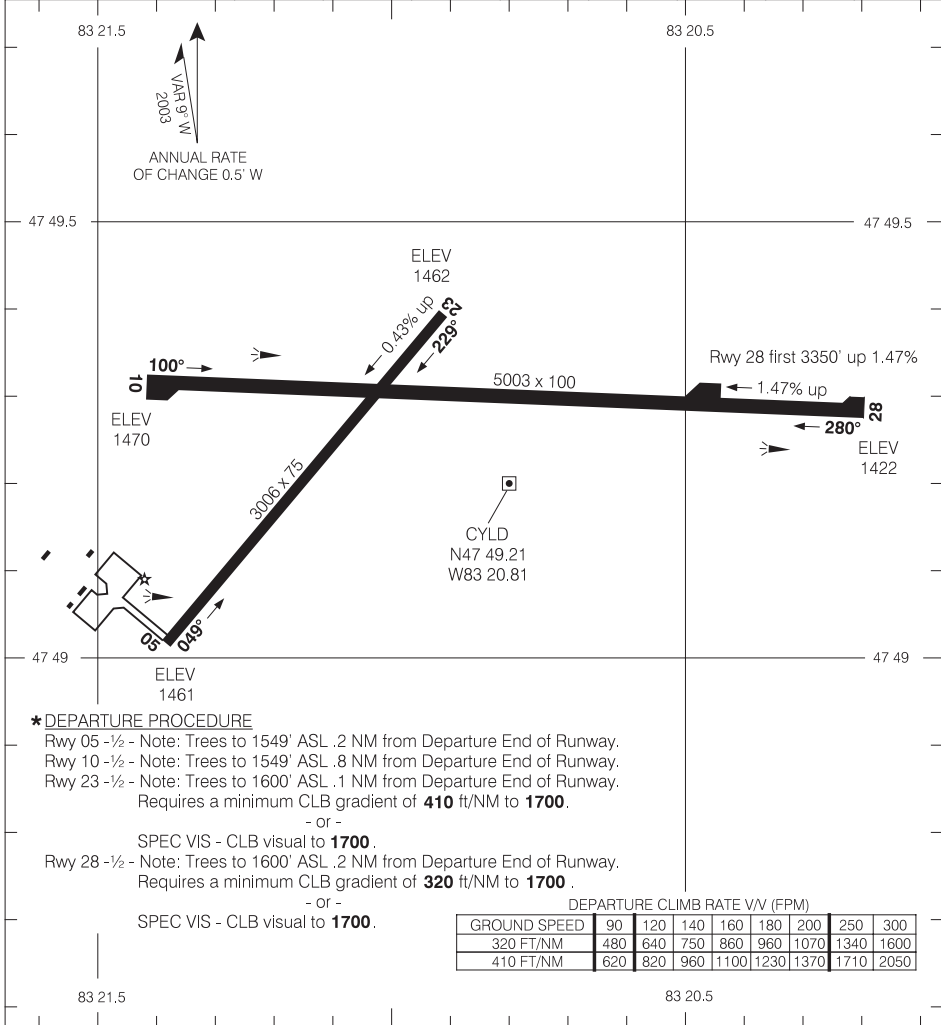
NDB A

AERODROME CHART

UNICOM (AU)
122.8 (ATF 5 NM)
O/T TFC 122.8

DECLARED DISTANCES

	05	23	10	28				
TORA	3006	3006	5003	5003				
TODA	4006	4006	5003	5003				
ASDA	3006	3006	5003	5003				
LDA	3006	3006	5003	5003				



*** DEPARTURE PROCEDURE**

Rwy 05 -½ - Note: Trees to 1549' ASL .2 NM from Departure End of Runway.
 Rwy 10 -½ - Note: Trees to 1549' ASL .8 NM from Departure End of Runway.
 Rwy 23 -½ - Note: Trees to 1600' ASL .1 NM from Departure End of Runway.
 Requires a minimum CLB gradient of **410 ft/NM to 1700**.

- or -
 SPEC VIS - CLB visual to **1700**.

Rwy 28 -½ - Note: Trees to 1600' ASL .2 NM from Departure End of Runway.
 Requires a minimum CLB gradient of **320 ft/NM to 1700**.

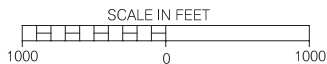
- or -
 SPEC VIS - CLB visual to **1700**.

DEPARTURE CLIMB RATE V/V (FPM)

GROUND SPEED	90	120	140	160	180	200	250	300
320 FT/NM	480	640	750	860	960	1070	1340	1600
410 FT/NM	620	820	960	1100	1230	1370	1710	2050

TAKE-OFF MINIMA

All Rwys: *



AERODROME CHART