

VOR A (GNSS)

<b>RADIO (DRCO)</b> <b>WINNIPEG</b> <b>123.55</b>	<b>UNICOM (AU)</b> <b>122.8 (ATF 5 NM)</b> <b>O/T TFC 122.8</b>	<b>ELEV 1035</b>
---	---	------------------

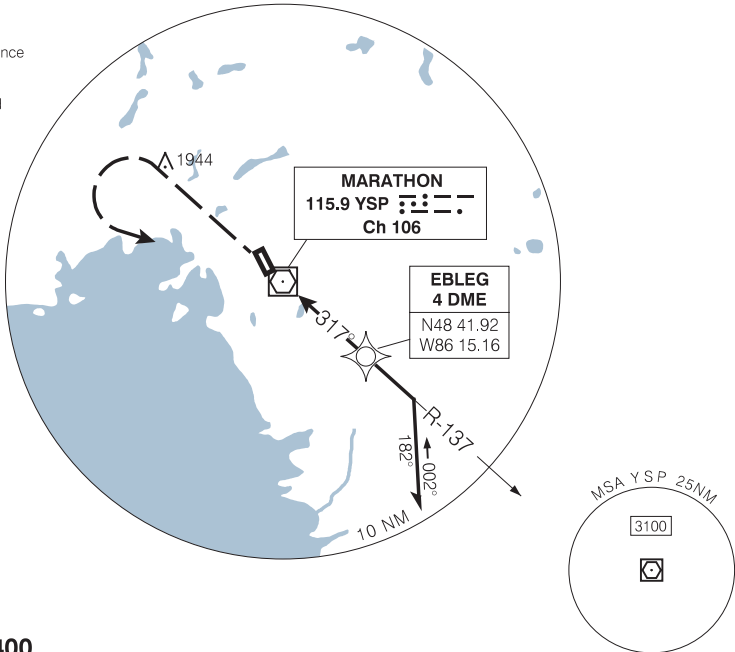
When using Geraldton (Greenstone Regional) altimeter setting add **170'** to all procedure altitudes.

CYSP

Rough terrain around airport.

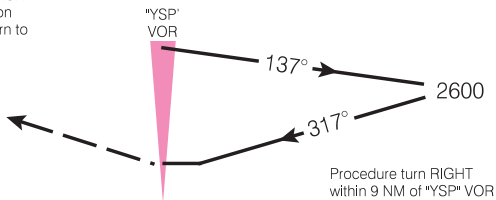
Moderate to severe turbulence may be anticipated.

Verify runway unobstructed when A/G advisory not available.

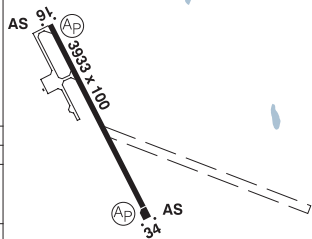


SAFE ALT 100 NM **3400**

MISSED APPROACH  
Climb to **3100** on **R-317**. LEFT turn to \*YSP\* VOR.



ARCAL 122.8 (see CFS)



CATEGORY	A	B	C	D
CIRCLING	<b>1700</b>	(665)	2	NOT AUTH

Knots	70	90	110	130	150
Min:Sec					

VOR A (GNSS)

484519N 862040W

VAR 6°W

MARATHON ON  
MARATHON

VOR/DME B (GNSS)

<b>RADIO (DRCO)</b> <b>WINNIPEG</b> <b>123.55</b>	<b>UNICOM (AU)</b> <b>122.8 (ATF 5 NM)</b> <b>O/T TFC 122.8</b>	<b>ELEV 1035</b>
---	---	------------------

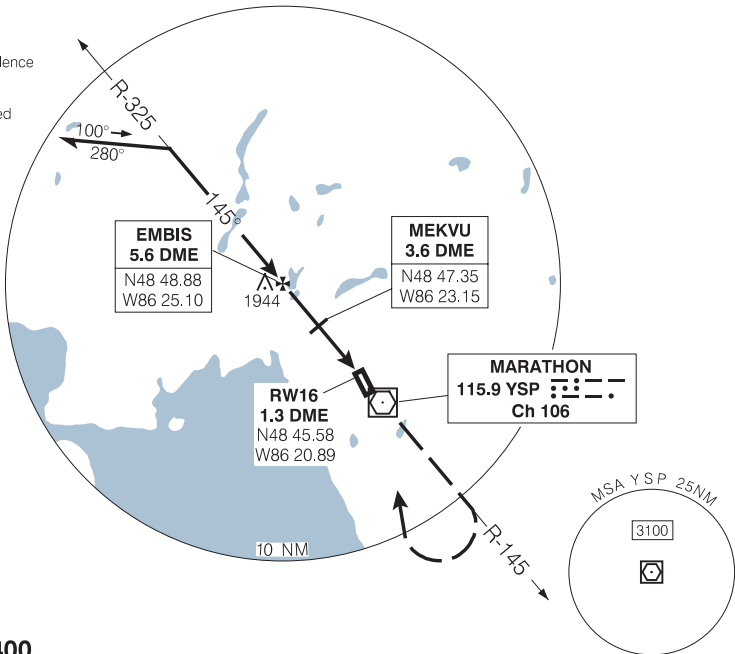
CYSP

When using Geraldton (Greenstone Regional) altimeter setting add **170'** to all procedure altitudes.

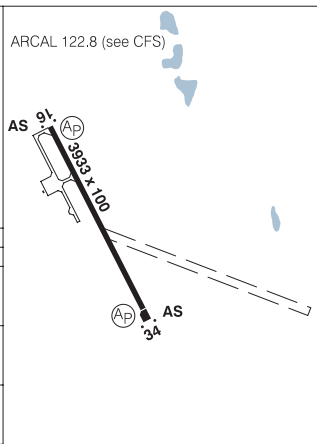
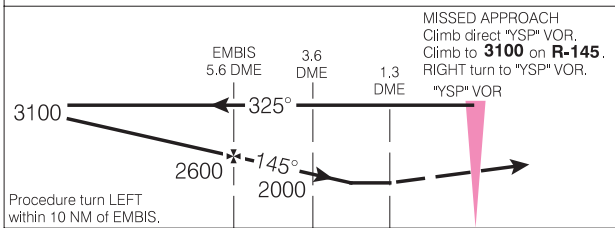
Rough terrain around airport.

Moderate to severe turbulence may be anticipated.

Verify runway unobstructed when A/G advisory not available.



SAFE ALT 100 NM **3400**



CATEGORY	A	B	C	D
CIRCLING	<b>1700</b>	(665)	2	NOT AUTH

Knots	70	90	110	130	150
Min:Sec					

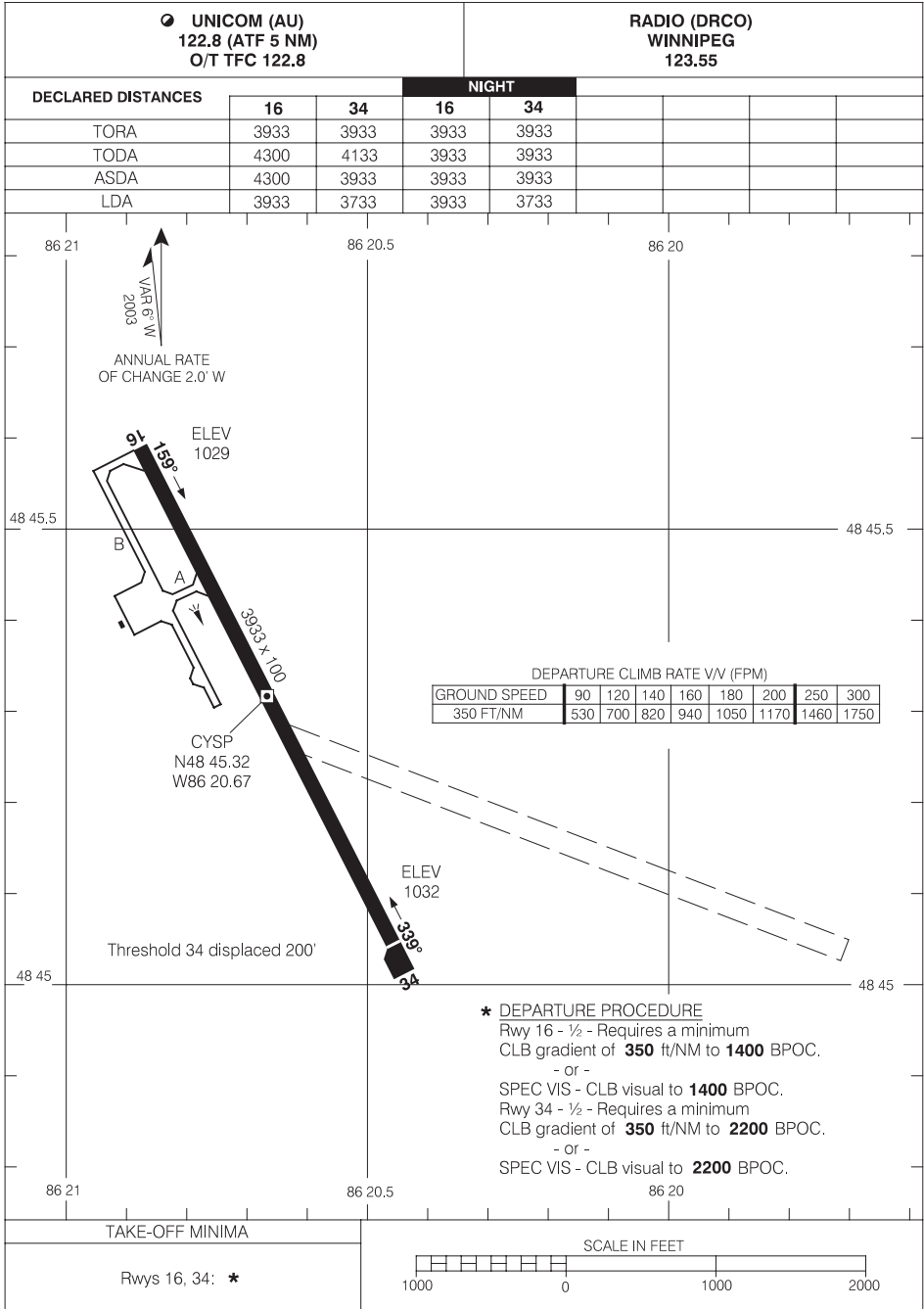
VOR/DME B (GNSS)

484519N 862040W

VAR 6°W

MARATHON ON  
MARATHON

AERODROME CHART



AERODROME CHART