

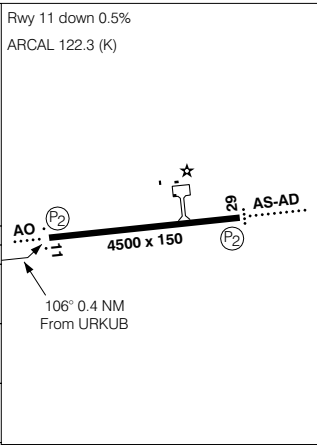
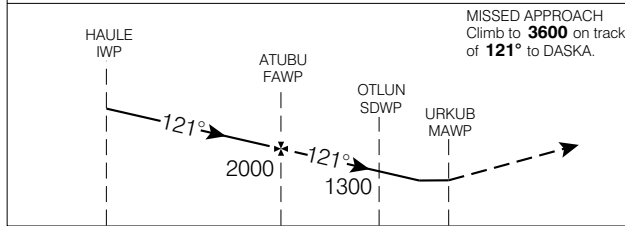
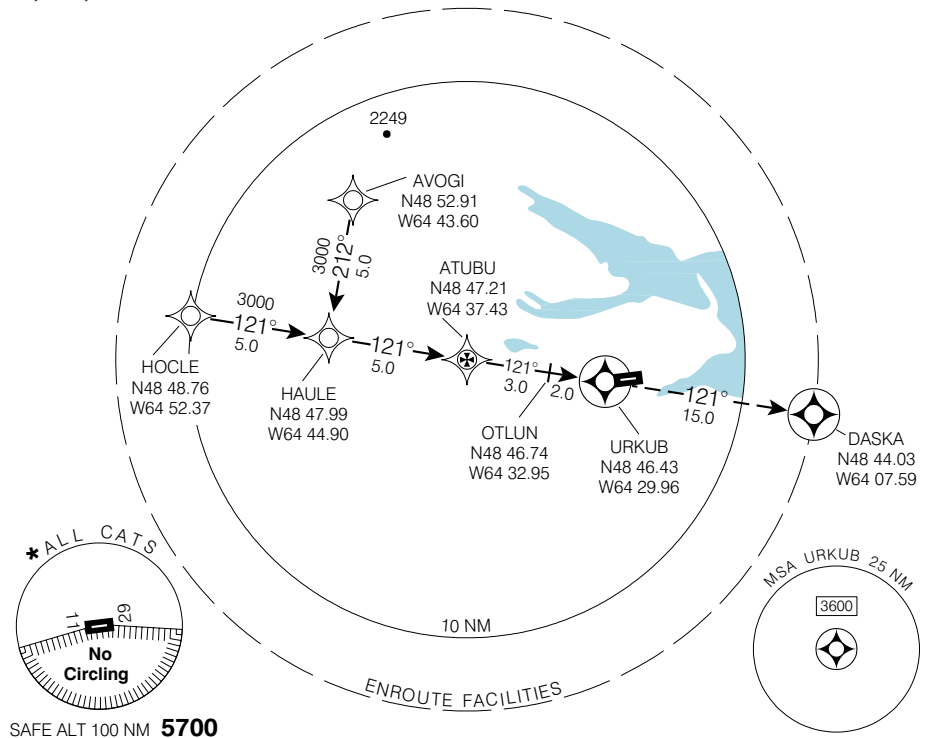
RNAV (GNSS) A

GASPÉ
GASPÉ QC

ARR/DEP QUEBEC RADIO (RCO) 126.7	RADIO QUEBEC (RCO) 122.3 (MF 5 NM)	ELEV 108
---	---	-----------------

Verify runway unobstructed.

CYGP



CATEGORY	A B C D			
LNAV / VNAV	NOT AUTHORIZED			
LNAV	CIRCLING ONLY			
* CIRCLING	760 (652) 2	800 (692) 2	900 (792) 2 ½	1060 (952) 2 ¾

Knots	70	90	110	130	150
Min:Sec					

RNAV (GNSS) A

N48 46 31 W64 28 43

VAR 22°W (1998)

GASPÉ QC
GASPÉ
NAD83

EFF 13 APR 06

CHANGE: GPS to GNSS

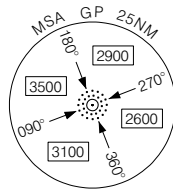
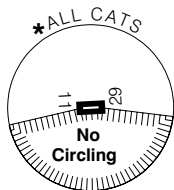
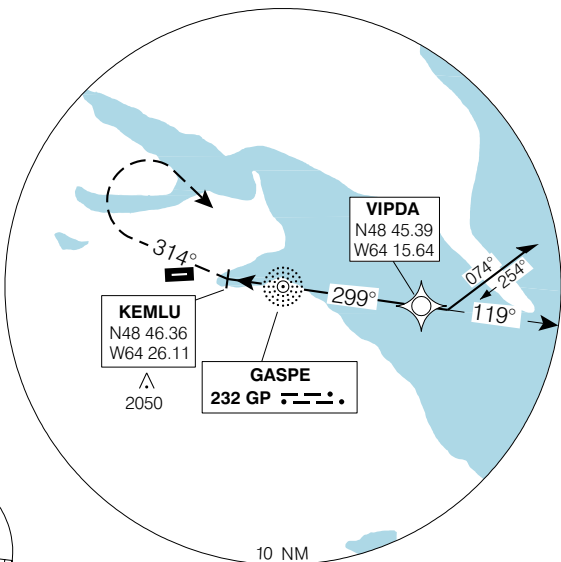
NDB RWY 29 (GNSS)

GASPÉ
GASPÉ QC

ARR/DEP QUEBEC RADIO (RCO) 126.7	RADIO QUEBEC (RCO) 122.3 (MF 5 NM)	ELEV 108
		TDZE 29 98

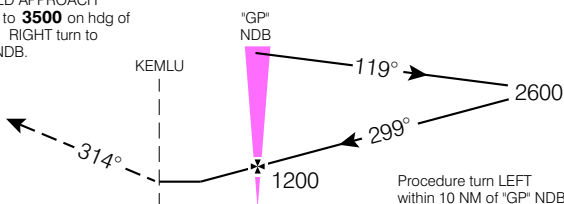
Verify runway unobstructed.

CYGP



SAFE ALT 100 NM **5700**

MISSED APPROACH
Climb to **3500** on hdg of **314°**. RIGHT turn to "GP" NDB.



Rwy 29 up 0.5%
ARCAL 122.3 (K)



CATEGORY	A	B	C	D
NDB	800	(702)	2 ¼	
* CIRCLING	800	(692) 2 ¼	900	1060
			(792) 2 ½	(952) 2 ¾

"GP" NDB to MAP 2.0 NM					
Knots	70	90	110	130	150
Min:Sec	1:43	1:20	1:05	0:55	0:48

NDB RWY 29 (GNSS)

N48 46 31 W64 28 43

VAR 21° W

GASPÉ QC

EFF 13 APR 06 CHANGE: GPS to GNSS

GASPÉ
NAD83

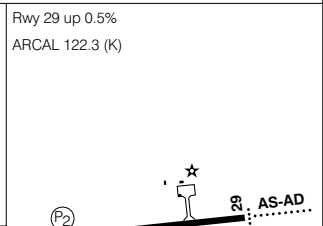
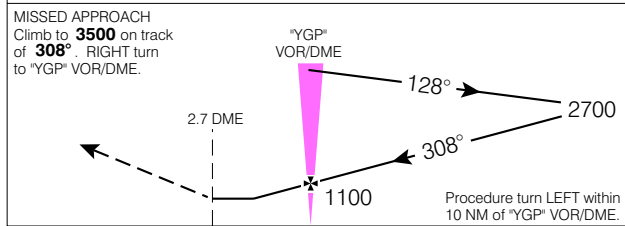
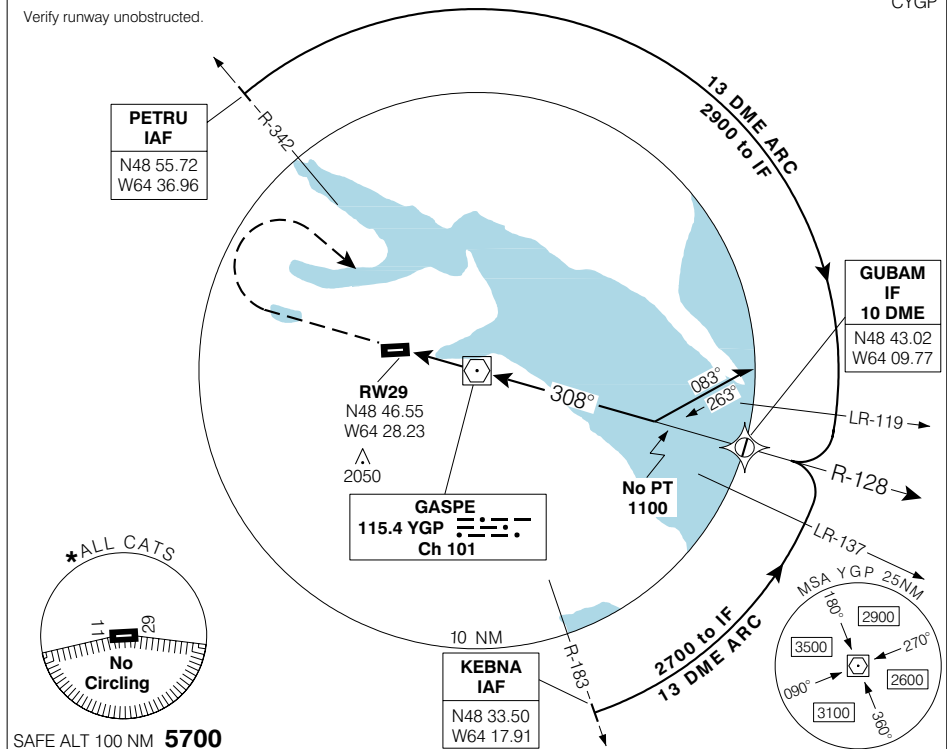
VOR RWY 29 (GNSS)

GASPÉ
GASPÉ QC

ARR/DEP QUEBEC RADIO (RCO) 126.7	RADIO QUEBEC (RCO) 122.3 (MF 5 NM)	ELEV 108
		TDZE 29 98

© 2006 Her Majesty The Queen in Right of Canada, Department of Natural Resources. All rights reserved

Source of Canadian Civil Aeronautical Data: © 2006 NAV CANADA. All rights reserved



CATEGORY	A	B	C	D
VOR	640	(542)	1 ¾	
* CIRCLING	760 (652) 2	800 (692) 2	900 (792) 2 ½	1060 (952) 2 ¾

"YGP" VOR to MAP 2.7 NM					
Min:Sec	70	90	110	130	150
	2:19	1:48	1:28	1:15	1:05

VOR RWY 29 (GNSS)

N48 46 31 W64 28 43

VAR 21° W

GASPÉ QC

EFF 13 APR 06 CHANGE: GPS to GNSS

GASPÉ
GASPÉ

NAD83

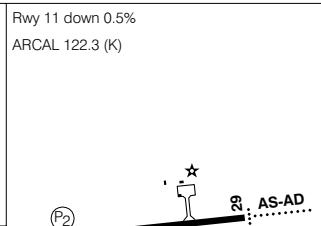
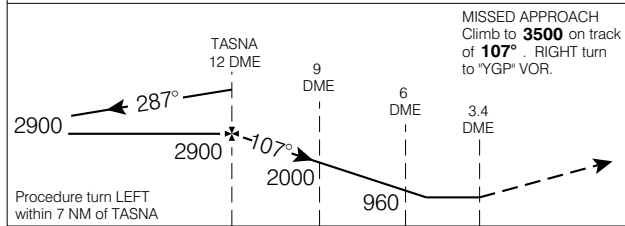
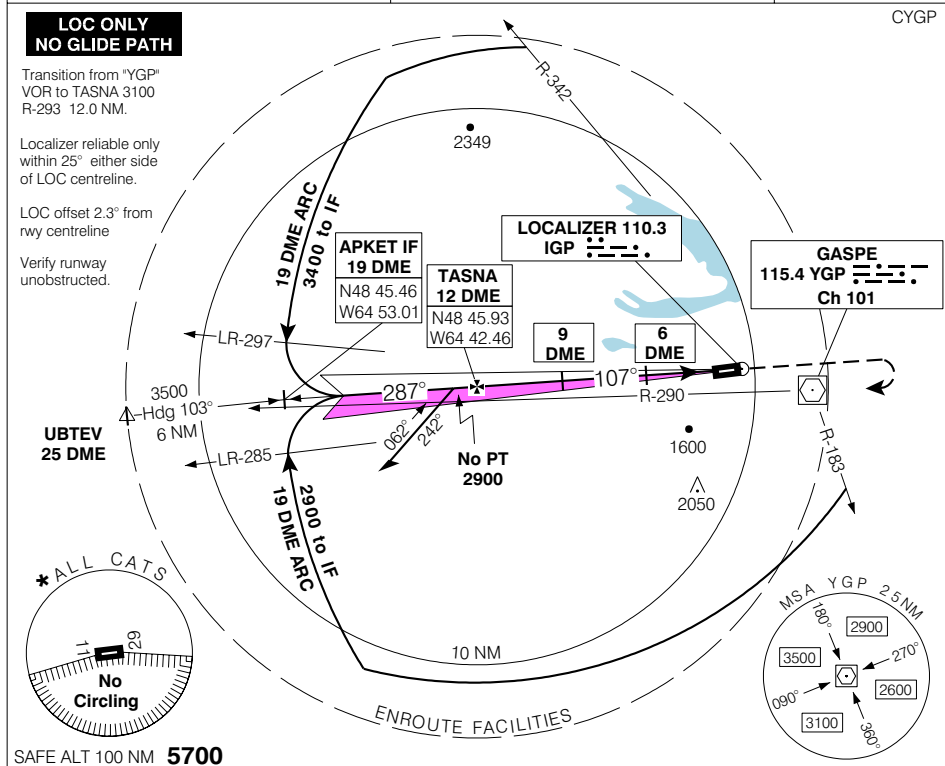
LOC/DME RWY 11

GASPÉ
GASPÉ QC

ARR/DEP QUEBEC RADIO (RCO) 126.7	RADIO QUEBEC (RCO) 122.3 (MF 5 NM)	ELEV 108
		TDZE 11 108

© 2006 Her Majesty The Queen in Right of Canada, Department of Natural Resources. All rights reserved

Source of Canadian Civil Aeronautical Data: © 2006 NAV CANADA. All rights reserved



CATEGORY	A	B	C	D												
LOC/DME	600 (492)		1 ½													
* CIRCLING	760 (652) 2	800 (692) 2	900 (792) 2 ½	1060 (952) 2 ¾												
<table border="1" style="width: 100%;"> <tr> <td>Knots</td> <td>70</td> <td>90</td> <td>110</td> <td>130</td> <td>150</td> </tr> <tr> <td>Min:Sec</td> <td></td> <td></td> <td></td> <td></td> <td></td> </tr> </table>					Knots	70	90	110	130	150	Min:Sec					
Knots	70	90	110	130	150											
Min:Sec																

LOC/DME RWY 11

EFF 13 APR 06 CHANGE: Editorial

N48 46 31 W64 28 43 VAR 21° W

GASPÉ QC
GASPÉ
NAD83

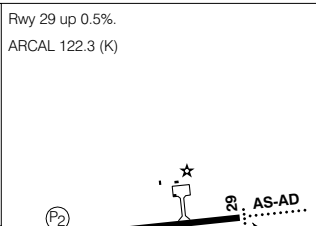
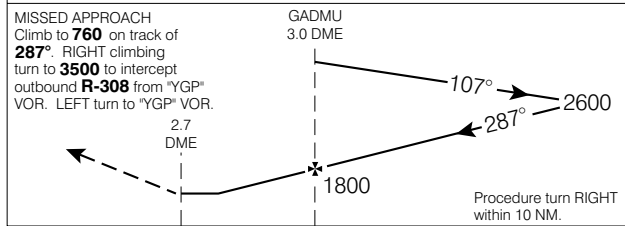
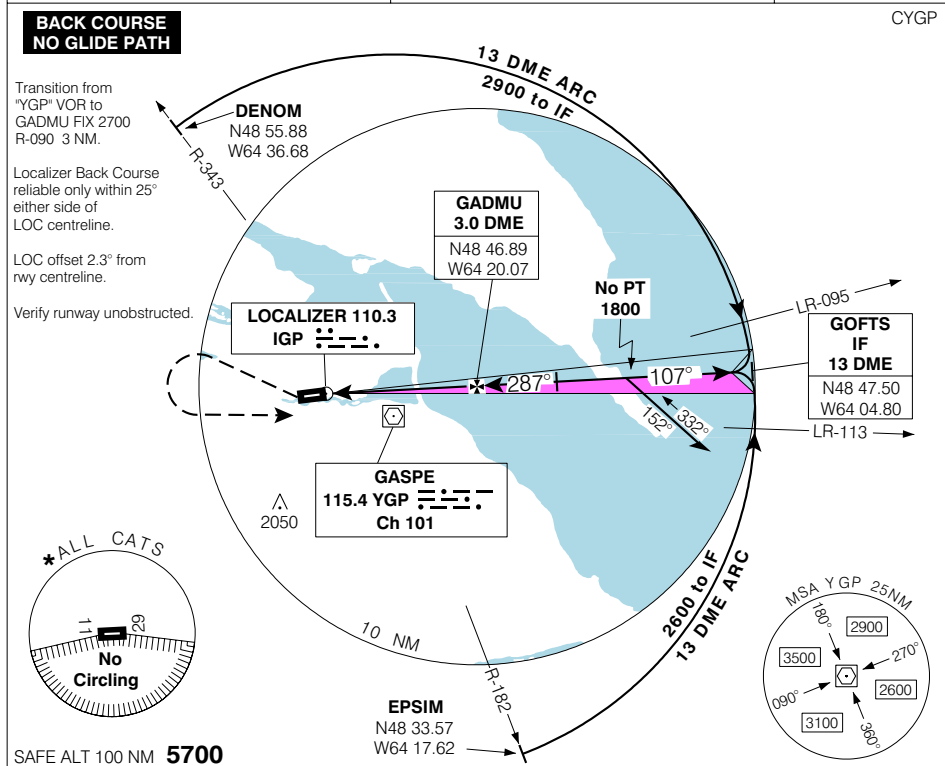
LOC(BC)/DME RWY 29

GASPÉ
GASPÉ QC

ARR/DEP QUEBEC RADIO (RCO) 126.7	RADIO QUEBEC (RCO) 122.3 (MF 5 NM)	ELEV 108
		TDZE 29 98

© 2006 Her Majesty The Queen in Right of Canada, Department of Natural Resources. All rights reserved.

Source of Canadian Civil Aeronautical Data: © 2006 NAV CANADA. All rights reserved.



CATEGORY	A	B	C	D
LOC(BC)/DME	460	(362)	1 ¼	
* CIRCLING	760 (652) 2	800 (692) 2	900 (792) 2 ½	1060 (952) 2 ¾

Knots	70	90	110	130	150
Min:Sec					

LOC(BC)/DME RWY 29

N48 46 31 W64 28 43

VAR 21° W

GASPÉ QC
GASPÉ
NAD83

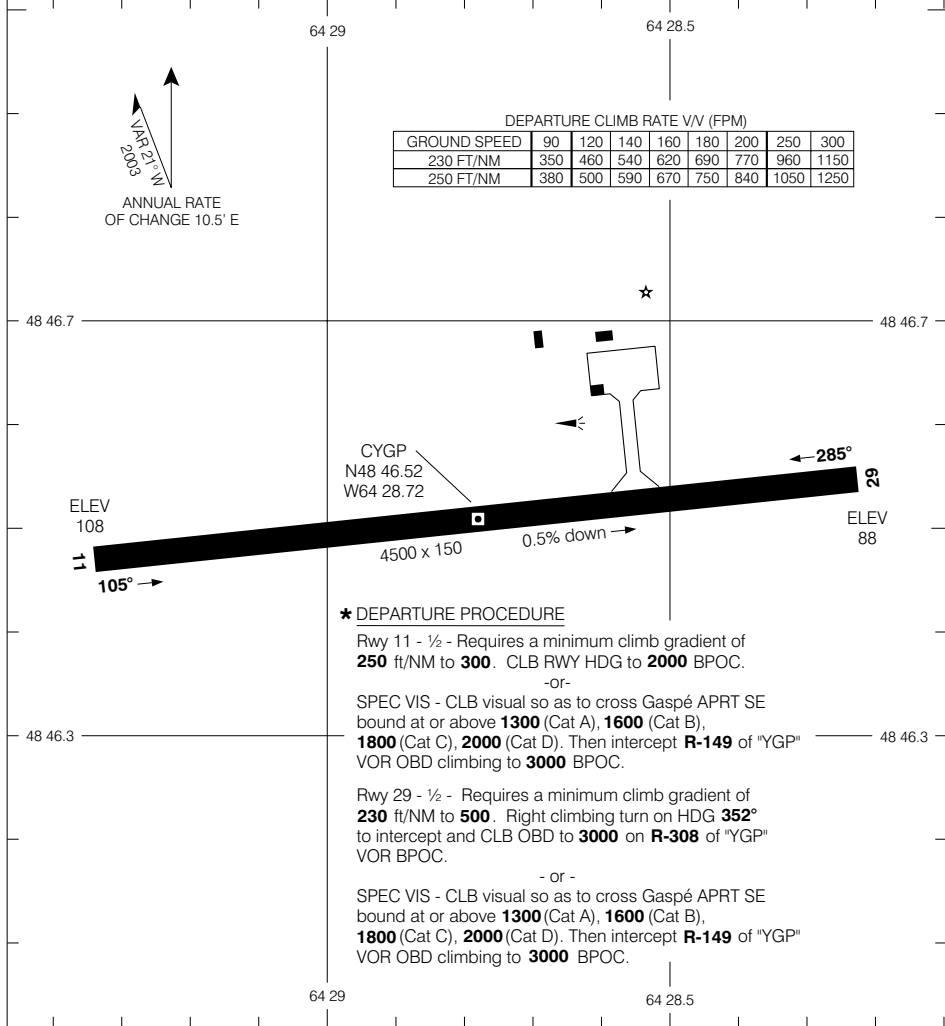
EFF 13 APR 06 CHANGE: Editorial

AERODROME CHART

GASPÉ
GASPÉ QC

RADIO QUEBEC (RCO) 122.3 (MF 5 NM)	DEP QUEBEC RADIO (RCO) 126.7
---	---

DECLARED DISTANCES		11	29						
TORA		4500	4500						
TODA		5500	5000						
ASDA		4500	4500						
LDA		4500	4500						



*** DEPARTURE PROCEDURE**

Rwy 11 - 1/2 - Requires a minimum climb gradient of **250** ft/NM to **300**. CLB RWY HDG to **2000** BPOC.
-or-
SPEC VIS - CLB visual so as to cross Gaspé APRT SE bound at or above **1300** (Cat A), **1600** (Cat B), **1800** (Cat C), **2000** (Cat D). Then intercept **R-149** of "YGP" VOR OBD climbing to **3000** BPOC.

Rwy 29 - 1/2 - Requires a minimum climb gradient of **230** ft/NM to **500**. Right climbing turn on HDG **352°** to intercept and CLB OBD to **3000** on **R-308** of "YGP" VOR BPOC.
- or -
SPEC VIS - CLB visual so as to cross Gaspé APRT SE bound at or above **1300** (Cat A), **1600** (Cat B), **1800** (Cat C), **2000** (Cat D). Then intercept **R-149** of "YGP" VOR OBD climbing to **3000** BPOC.

TAKE-OFF MINIMA	SCALE IN FEET
Rwys 11, 29: *	

AERODROME CHART
EFF 13 APR 06

CHANGE: Editorial

GASPÉ QC
GASPÉ
NAD83

© 2006 Her Majesty The Queen in Right of Canada, Department of Natural Resources All rights reserved. Source of Canadian Civil Aeronautical Data: © 2006 NAV CANADA All rights reserved.