

AUPALUK
AUPALUK QC

RNAV (GNSS) RWY 04

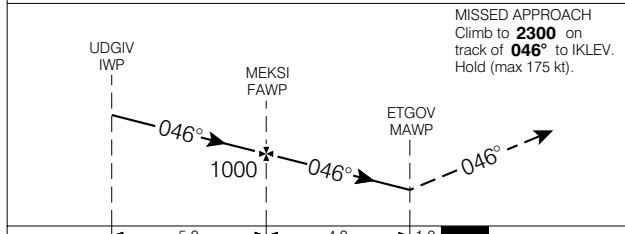
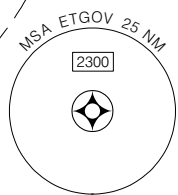
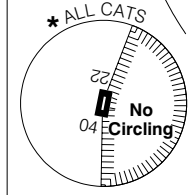
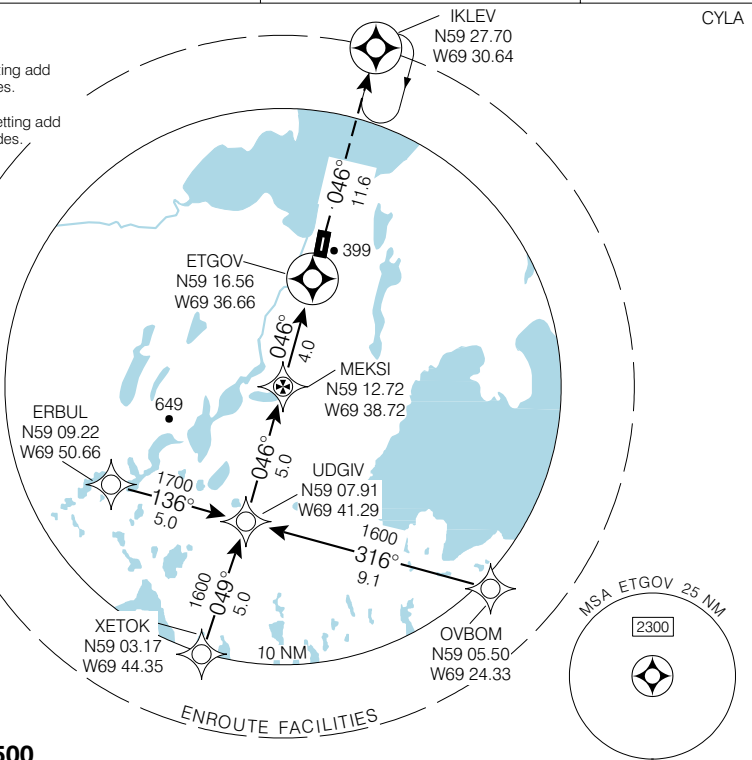
| | | |
|--|--|--------------------------|
| <p>NO CTL - BCST INTENTIONS ON 126.7 WITHIN 15 MIN OF ETA AND PRIOR TO DESCENT, THEN ON MF 5 MIN PRIOR TO COMMENCING APCH</p> | <p>APRT RADIO 122.1 (MF 5 NM) O/T TFC 122.1</p> | <p>ELEV 119</p> |
| | | <p>TDZE 04 89</p> |

Altimeter setting available limited hours.

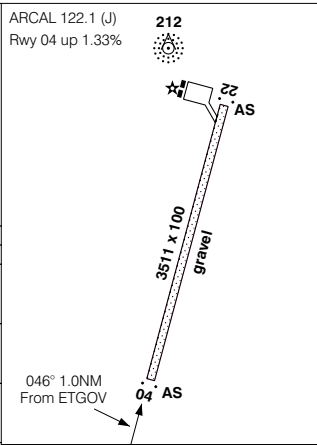
When using Tasiujaq alt setting add **90'** to all procedure altitudes.

When using Kangirsuk alt setting add **140'** to all procedure altitudes.

Verify runway unobstructed when A/G advisory not available.



MISSED APPROACH
Climb to **2300** on track of **046°** to IKLEV. Hold (max 175 kt).



| | | | | |
|-------------|----------------|-----------|------------|------------|
| CATEGORY | A B C D | | | |
| LNAV / VNAV | NOT AUTHORIZED | | | |
| LNAV | 500 | (411) | 1 ¼ | |
| * CIRCLING | 620 | (501) 1 ½ | 620 | 720 |
| | | | (501) 2 | (601) 2 |

| | | | | | |
|---------|----|----|-----|-----|-----|
| Knots | 70 | 90 | 110 | 130 | 150 |
| Min:Sec | | | | | |

RNAV (GNSS) RWY 04

EFF 13 APR 06

CHANGE: GPS to GNSS

N59 17.48 W69 35.59

VAR 31° W (1999)

AUPALUK QC
AUPALUK
NAD83

RNAV (GNSS) RWY 22

AUPALUK
AUPALUK QC

| | | |
|---|---|--------------------|
| NO CTL - BCST INTENTIONS ON 126.7 WITHIN 15 MIN OF ETA AND PRIOR TO DESCENT, THEN ON MF 5 MIN PRIOR TO COMMENCING APCH | APRT RADIO 122.1 (MF 5 NM) O/T TFC 122.1 | ELEV 119 |
| | | TDZE 22 119 |

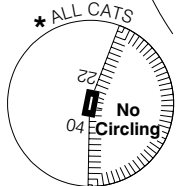
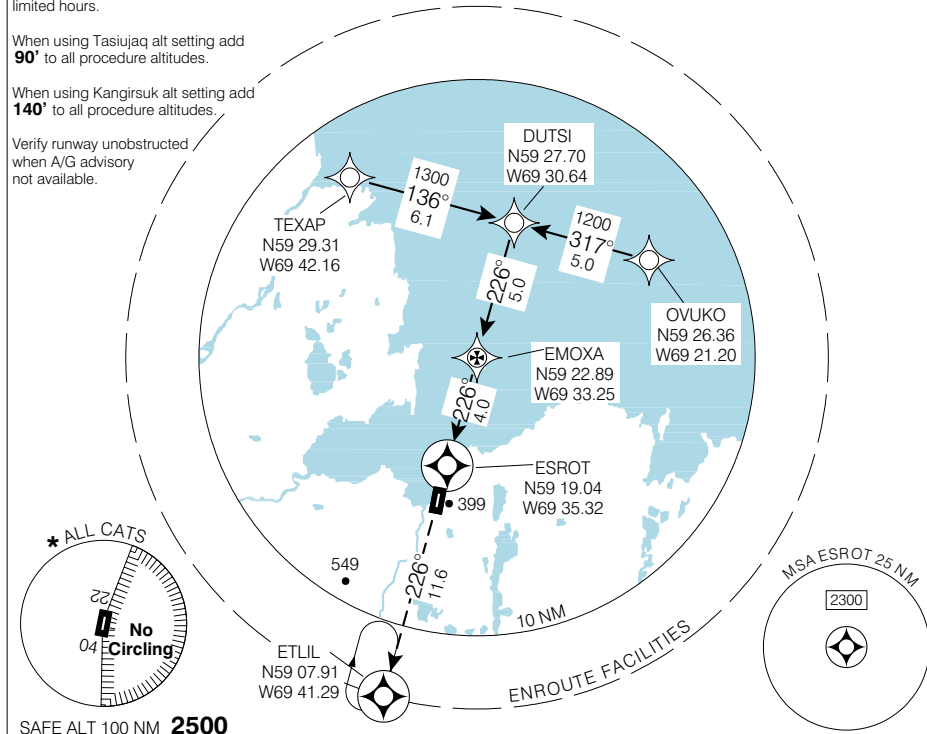
Altimeter setting available limited hours.

When using Tasiujaq alt setting add **90'** to all procedure altitudes.

When using Kangirsuk alt setting add **140'** to all procedure altitudes.

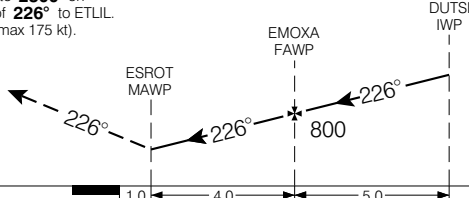
Verify runway unobstructed when A/G advisory not available.

CYLA

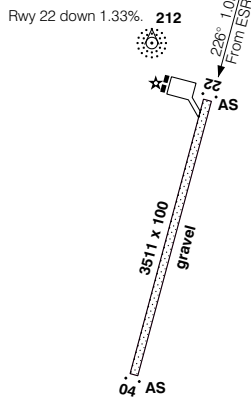


SAFE ALT 100 NM **2500**

MISSED APPROACH
 Climb to **2300** on track of **226°** to ETLIL.
 Hold (max 175 kt).



ARCAL 122.1 (J)



| | | | | |
|-------------|----------------|-----------|------------|------------|
| CATEGORY | A | B | C | D |
| LNAV / VNAV | NOT AUTHORIZED | | | |
| LNAV | 560 | (441) | 1 ½ | |
| * CIRCLING | 620 | (501) 1 ½ | 620 | 720 |
| | | | (501) 2 | (601) 2 |

| | | | | | |
|---------|----|----|-----|-----|-----|
| Knots | 70 | 90 | 110 | 130 | 150 |
| Min:Sec | | | | | |

RNAV (GNSS) RWY 22

N59 17 48 W69 35 59

VAR 31° W (1999)

AUPALUK QC
AUPALUK

EFF 13 APR 06

CHANGE: GPS to GNSS

NAD83

AUPALUK
AUPALUK QC

NDB RWY 04

| | | |
|---|---|-------------------|
| NO CTL - BCST INTENTIONS ON 126.7 WITHIN 15 MIN OF ETA AND PRIOR TO DESCENT, THEN ON MF 5 MIN PRIOR TO COMMENCING APCH | APRT RADIO 122.1 (MF 5 NM) O/T TFC 122.1 | ELEV 119 |
| | | TDZE 04 89 |

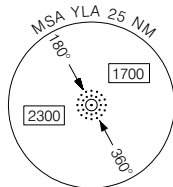
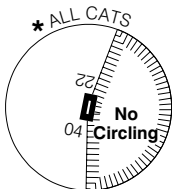
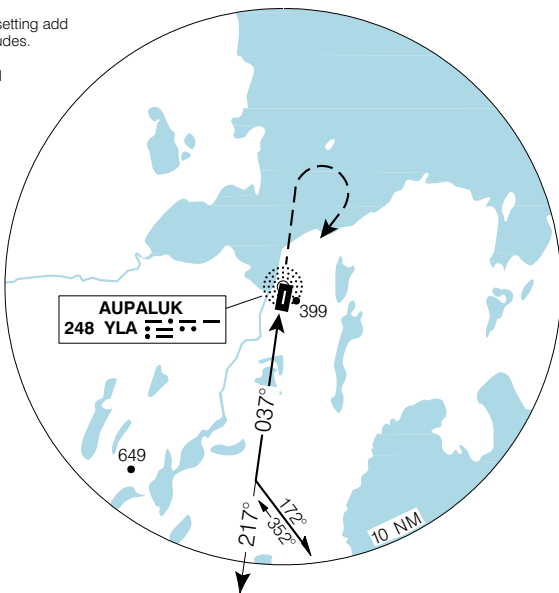
Altimeter setting available limited hours.

When using Tasiujaq alt setting add **90'** to all procedure altitudes.

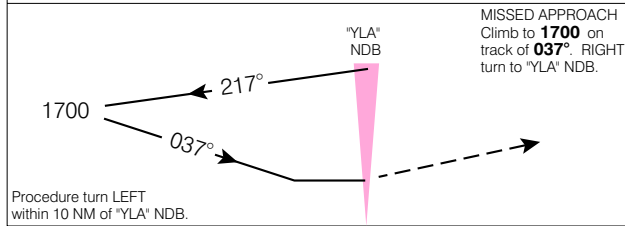
When using Kangirsuk alt setting add **140'** to all procedure altitudes.

Verify runway unobstructed when A/G advisory not available.

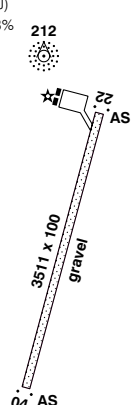
CYLA



SAFE ALT 100 NM **2500**



ARCAL 122.1 (J)
Rwy 04 up 1.33%



| CATEGORY | A | B | C | D |
|------------|------------|-------|---|---|
| NDB | 760 | (671) | | 2 |
| * CIRCLING | 760 | (641) | | 2 |

| | | | | | |
|---------|----|----|-----|-----|-----|
| Knots | 70 | 90 | 110 | 130 | 150 |
| Min:Sec | | | | | |

NDB RWY 04

N59 17 48 W69 35 59

VAR 28° W

AUPALUK QC
AUPALUK
NAD83

EFF 13 APR 06

CHANGE: Editorial

NDB RWY 22

AUPALUK
AUPALUK QC

| | | |
|---|---|--------------------|
| NO CTL - BCST INTENTIONS ON 126.7 WITHIN 15 MIN OF ETA AND PRIOR TO DESCENT, THEN ON MF 5 MIN PRIOR TO COMMENCING APCH | APRT RADIO 122.1 (MF 5 NM) O/T TFC 122.1 | ELEV 119 |
| | | TDZE 22 119 |

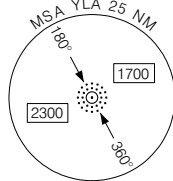
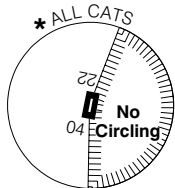
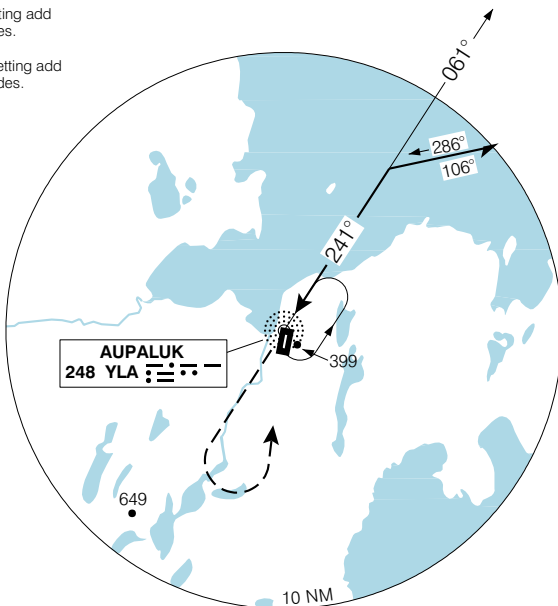
Altimeter setting available limited hours.

When using Tasiujaq alt setting add **90'** to all procedure altitudes.

When using Kangirsuk alt setting add **140'** to all procedure altitudes.

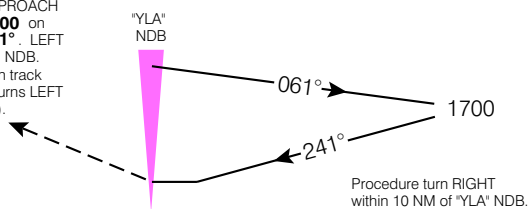
Verify runway unobstructed when A/G advisory not available.

CYLA

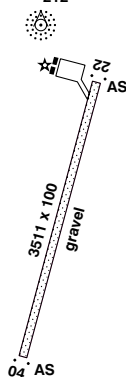


SAFE ALT 100 NM **2500**

MISSED APPROACH
Climb to **1700** on track of **241°**. LEFT turn to "YLA" NDB. Hold inbound on track **241°**. All turns LEFT (max 175 kt).



ARCAL 122.1 (J)
Rwy 22 down 1.33% **212**



| CATEGORY | A | B | C | D |
|------------|------------|-------|---|---|
| NDB | 740 | (621) | | 2 |
| * CIRCLING | 740 | (621) | | 2 |
| | | | | |
| | | | | |

| | | | | | |
|---------|----|----|-----|-----|-----|
| Knots | 70 | 90 | 110 | 130 | 150 |
| Min:Sec | | | | | |

NDB RWY 22

N59 17 48 W69 35 59

VAR 28° W

AUPALUK QC
AUPALUK

EFF 13 APR 06

CHANGE: Editorial

NAD83

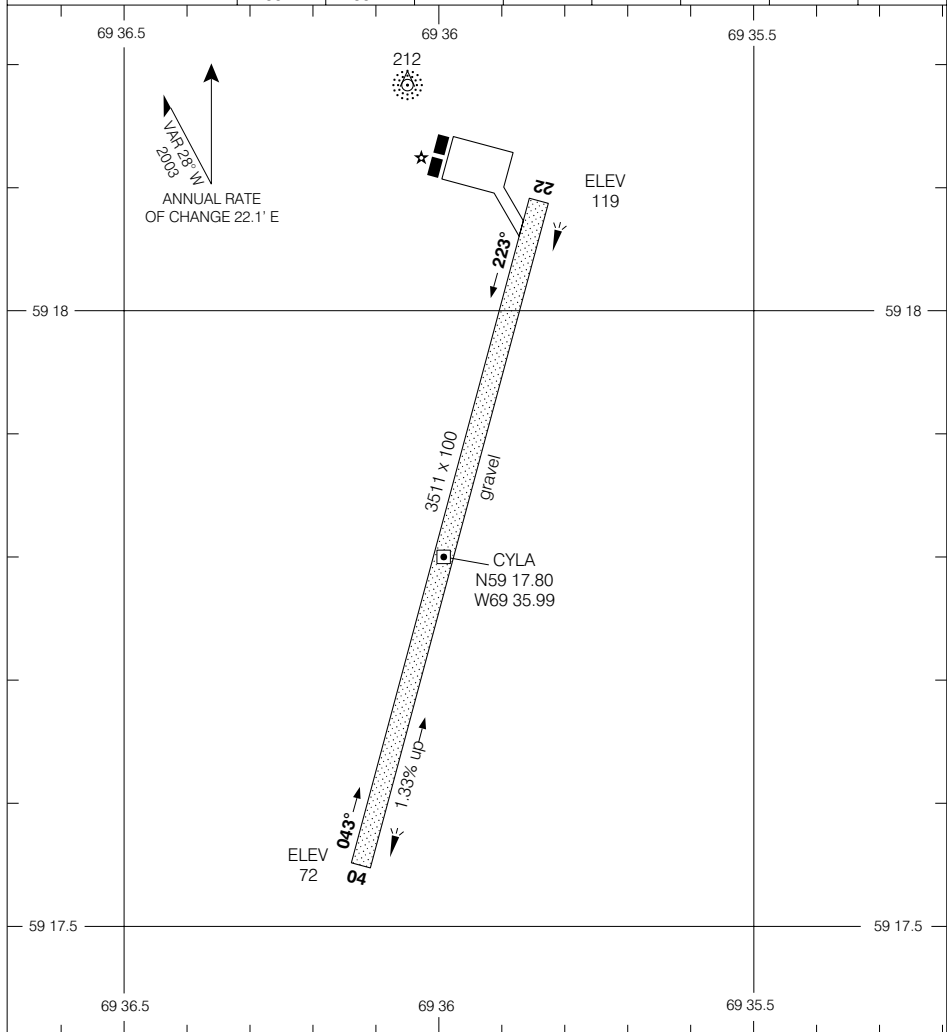
AERODROME CHART

AUPALUK
AUPALUK QC

APRT RADIO
122.1 (MF 5 NM)
O/T TFC 122.1

DECLARED DISTANCES

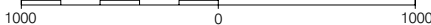
| | 04 | 22 | | | | | | |
|------|-----------|-----------|--|--|--|--|--|--|
| TORA | 3511 | 3511 | | | | | | |
| TODA | 4511 | 4511 | | | | | | |
| ASDA | 3511 | 3511 | | | | | | |
| LDA | 3511 | 3511 | | | | | | |



TAKE-OFF MINIMA

Rwys 04, 22: 1/2

SCALE IN FEET



AERODROME CHART

EFF 13 APR 06

CHANGE: Editorial

AUPALUK QC
AUPALUK
NAD83

© 2006 Her Majesty The Queen in Right of Canada, Department of Natural Resources. All rights reserved. Source of Canadian Civil Aeronautical Data: © 2006 NAV CANADA. All rights reserved.