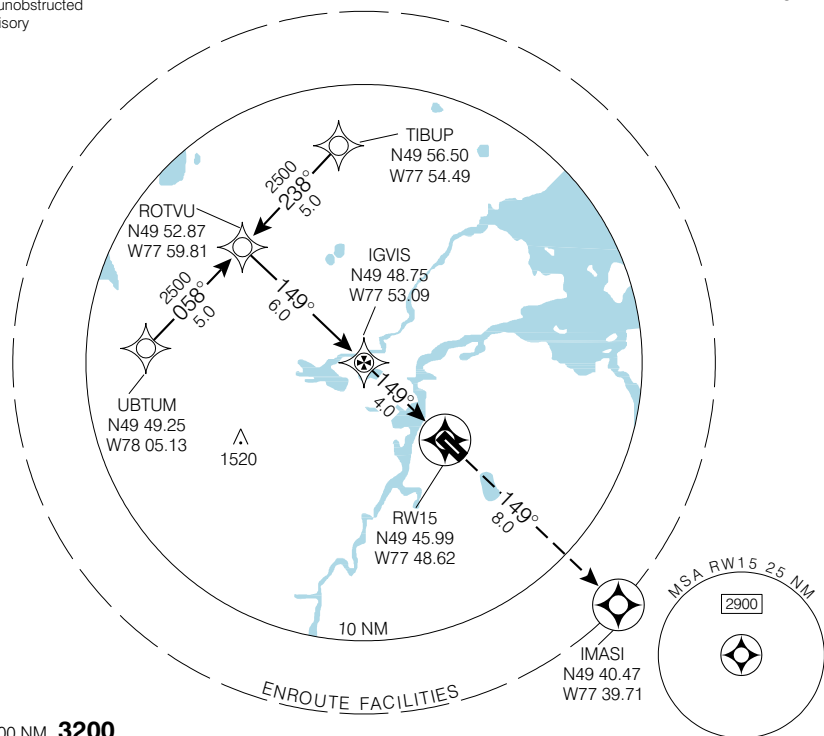


MATAGAMI  
MATAGAMI QC

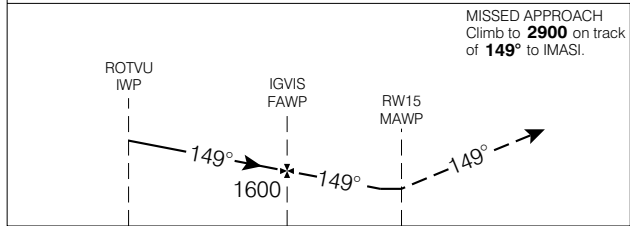
**RNAV (GNSS) RWY 15**

NO CTL - BCST INTENTIONS ON 126.7 WITHIN 15 MIN OF ETA AND PRIOR TO DESCENT, THEN ON ATF 5 MIN PRIOR TO COMMENCING APCH	AWOS 127.45 (Eng) 125.3 (Fr)	RADIO (DRCO) QUEBEC 123.55	UNICOM (Fr) 122.8 (ATF 5 NM) O/T TFC 122.8	ELEV <b>918</b> TDZE 15 <b>908</b>
	CYNM			

Verify runway unobstructed when A/G advisory not available.

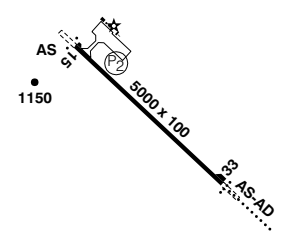


SAFE ALT 100 NM **3200**



MISSED APPROACH  
Climb to **2900** on track of **149°** to IMASI.

ARCAL 122.8 (K)  
Rwy 15 down 0.5% first 2570' then up 0.9%



CATEGORY	A		B		C		D	
LNAV / VNAV	NOT AUTHORIZED							
LNAV	<b>1320</b>		(412)		1 ¼			
CIRCLING	<b>1420</b>		(502) 1 ½		<b>1420</b>		<b>1520</b>	
					(502) 2		(602) 2	

Knots	70	90	110	130	150
Min:Sec					

**RNAV (GNSS) RWY 15**

EFF 13 APR 06 CHANGE: GPS to GNSS

N49 45 42 W77 48 10

VAR 15°W (1998)

MATAGAMI QC  
MATAGAMI  
NAD83

© 2006 Her Majesty The Queen in Right of Canada, Department of Natural Resources. All rights reserved. Source of Canadian Civil Aeronautical Data: © 2006 NAV CANADA. All rights reserved.

**NDB RWY 33 (GNSS)**

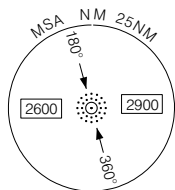
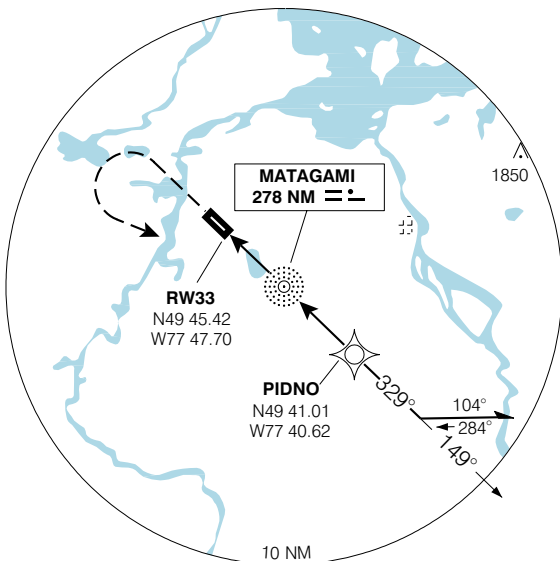
MATAGAMI  
MATAGAMI QC

<b>NO CTL - BCST INTENTIONS ON 126.7 WITHIN 15 MIN OF ETA AND PRIOR TO DESCENT, THEN ON ATF 5 MIN PRIOR TO COMMENCING APCH</b>	<b>AWOS</b> 127.45 (Eng) 125.3 (Fr)	<b>RADIO (DRCO)</b> QUEBEC 123.55	<b>UNICOM (Fr)</b> 122.8 (ATF 5 NM) O/T TFC 122.8	<b>ELEV 918</b>
				<b>TDZE 33 918</b>

© 2006 Her Majesty The Queen in Right of Canada, Department of Natural Resources. All rights reserved

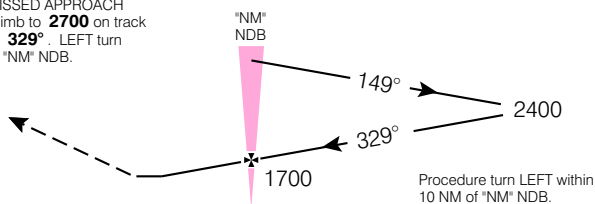
Verify runway unobstructed when A/G advisory not available.

CYNAM



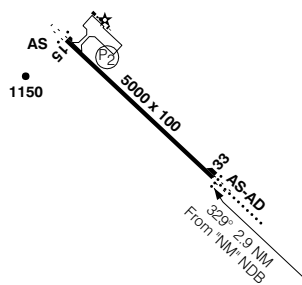
SAFE ALT 100 NM **3200**

**MISSED APPROACH**  
Climb to **2700** on track of **329°**, LEFT turn to "NM" NDB.



ARCAL 122.8 (K)

Rwy 33 down 0.9% first 2430' then up 0.5%



CATEGORY	A	B	C	D
NDB	<b>1380</b>	(462)	1 ½	
CIRCLING	<b>1420</b>	(502) 1 ½	<b>1420</b> (502) 2	<b>1520</b> (602) 2

"NM" NDB to MAP 2.9 NM					
Knots	70	90	110	130	150
Min:Sec	<b>2:29</b>	<b>1:56</b>	<b>1:35</b>	<b>1:20</b>	<b>1:10</b>

**NDB RWY 33 (GNSS)**

N49 45 42 W77 48 10

VAR 15° W

MATAGAMI QC

EFF 13 APR 06 CHANGE: GPS to GNSS

MATAGAMI  
NAD83

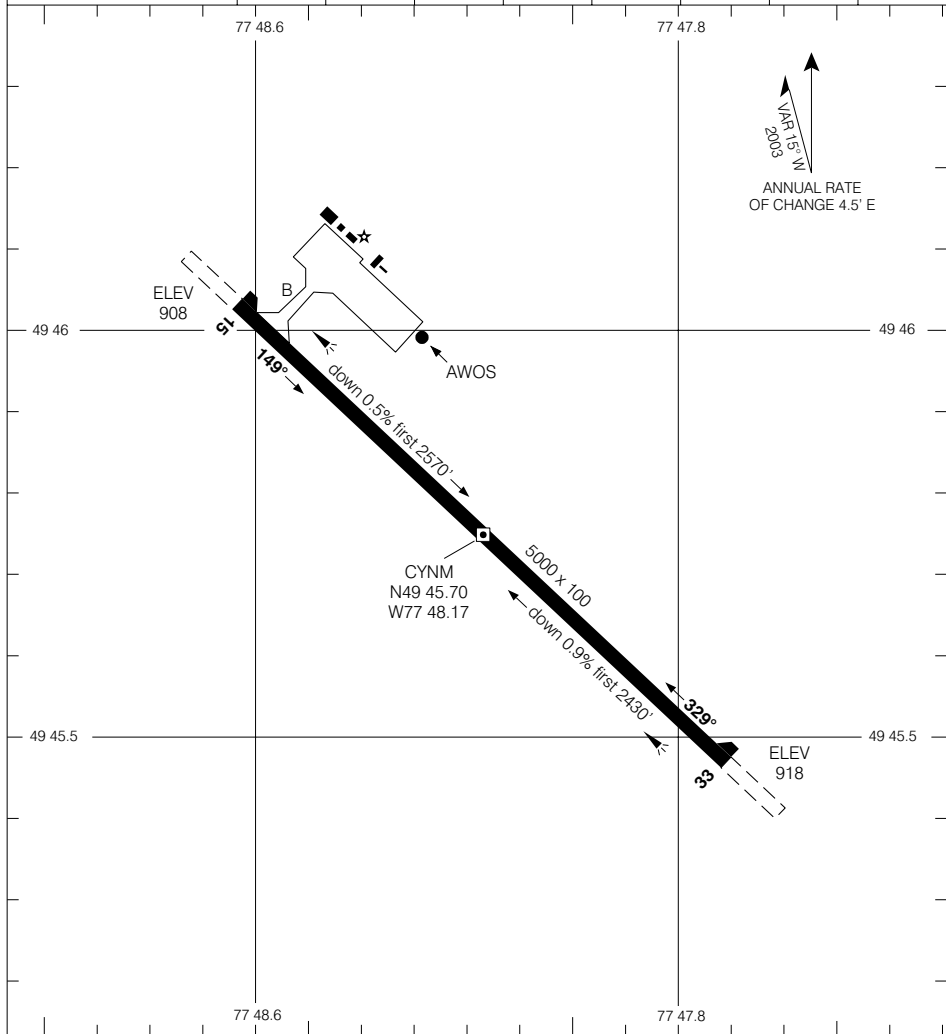
Source of Canadian Civil Aeronautical Data: © 2006 NAV CANADA All rights reserved

MATAGAMI  
MATAGAMI QC

**AERODROME CHART**

<b>AWOS</b> <b>127.45 (Eng)</b> <b>125.3 (Fr)</b>	<b>RADIO (DRCO)</b> <b>QUEBEC</b> <b>123.55</b>	<b>UNICOM (Fr)</b> <b>122.8 (ATF 5 NM)</b> <b>O/T TFC 122.8</b>
---	---	---

DECLARED DISTANCES	15	33					
	TORA	5000	5000				
TODA	5800	5500					
ASDA	5000	5000					
LDA	5000	5000					



<b>TAKE-OFF MINIMA</b>  Rwys 15, 33: ½	SCALE IN FEET 
--	-------------------

**AERODROME CHART** CHANGE: Editorial MATAGAMI QC  
MATAGAMI  
NAD83

© 2006 Her Majesty The Queen in Right of Canada, Department of Natural Resources. All rights reserved. Source of Canadian Civil Aeronautical Data: © 2006 NAV CANADA. All rights reserved.