

**NDB RWY 13 (GNSS)**

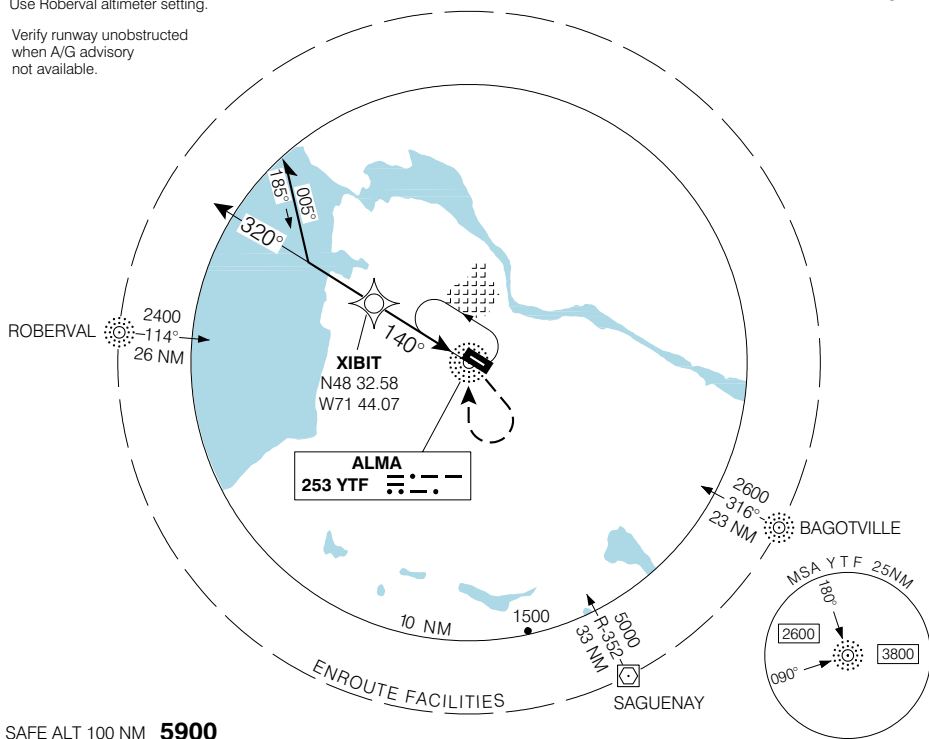
ALMA  
ALMA QC

<b>ARR/DEP</b> <b>BAGOTVILLE TML</b> <b>127.2</b>	<b>UNICOM</b> <b>123.0 (ATF 5 NM)</b> <b>O/T TFC 123.0</b>	<b>RADIO (RCO)</b> <b>QUEBEC</b> <b>126.7</b>	<b>ELEV 445</b>
			<b>TDZE 13 432</b>

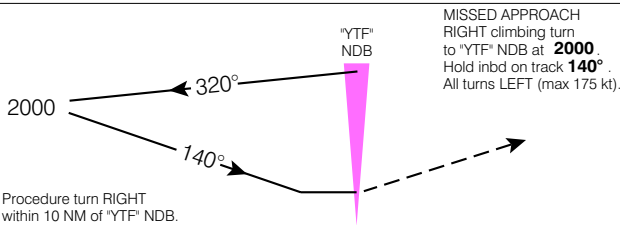
Use Roberval altimeter setting.

Verify runway unobstructed when A/G advisory not available.

CYTF

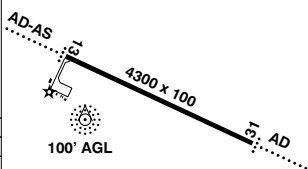


SAFE ALT 100 NM **5900**



MISSED APPROACH  
RIGHT climbing turn to "YTF" NDB at **2000**.  
Hold inbd on track **140°**.  
All turns LEFT (max 175 kt).

ARCAL 123.0 (J)



CATEGORY	A	B	C	D
NDB	<b>1060</b>	(628)	2	
CIRCLING	<b>1060</b> (615) 2	<b>1260</b>	(815)	2 ½

Knots	70	90	110	130	150
Min:Sec					

**NDB RWY 13 (GNSS)**

N48 30 32 W71 38 31

VAR 18° W

ALMA QC  
ALMA  
NAD83

EFF 13 APR 06

CHANGE: GPS to GNSS

**NDB/DME RWY 31 (GNSS)**

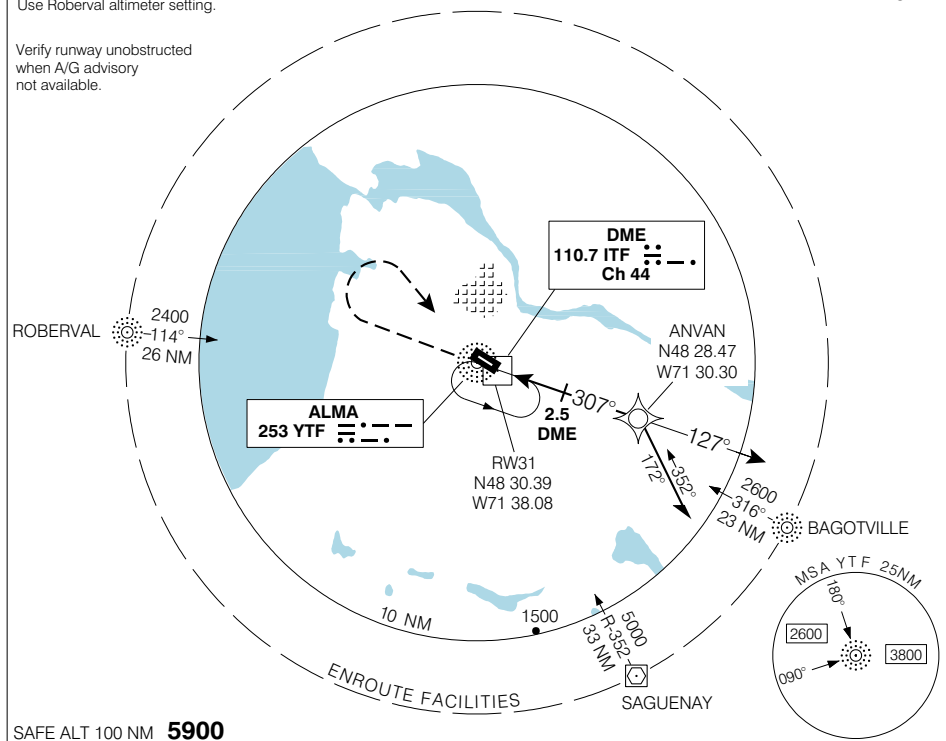
ALMA  
ALMA QC

<b>ARR/DEP</b> <b>BAGOTVILLE TML</b> <b>127.2</b>	<b>UNICOM</b> <b>123.0 (ATF 5 NM)</b> <b>O/T TFC 123.0</b>	<b>RADIO (RCO)</b> <b>QUEBEC</b> <b>126.7</b>	<b>ELEV 445</b>
			<b>TDZE 31 445</b>

Use Roberval altimeter setting.

Verify runway unobstructed when A/G advisory not available.

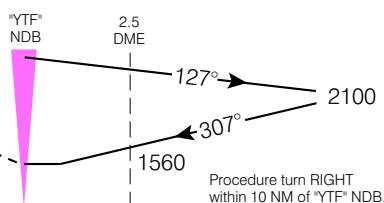
CYTF



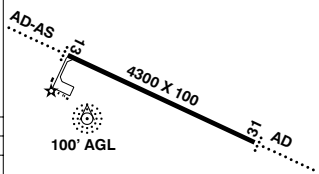
SAFE ALT 100 NM **5900**

**MISSED APPROACH**

Climb to **2400** on track of **307°**. RIGHT turn to "YTF" NDB. Hold inbound on track **307°**. All turns LEFT (max 175 kt)



ARCAS 123.0 (J)



CATEGORY	A	B	C	D
NDB/DME	<b>1040</b>	(595)		1 ¾
CIRCLING	<b>1040</b> (595) 1 ¾	<b>1260</b>	(815)	2 ½

Knots	70	90	110	130	150
Min:Sec					

**NDB/DME RWY 31 (GNSS)**

N48 30 32 W71 38 31

VAR 18° W

ALMA QC

EFF 13 APR 06

CHANGE: GPS to GNSS

ALMA  
NAD83

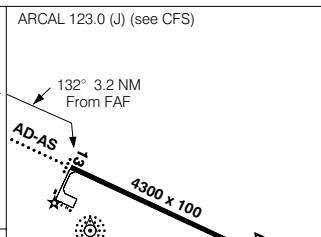
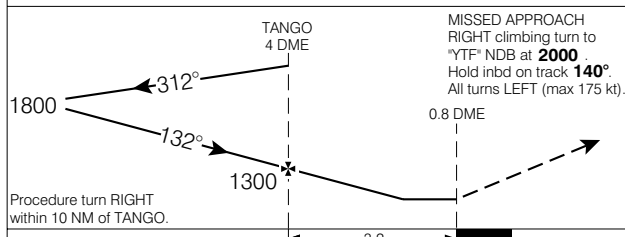
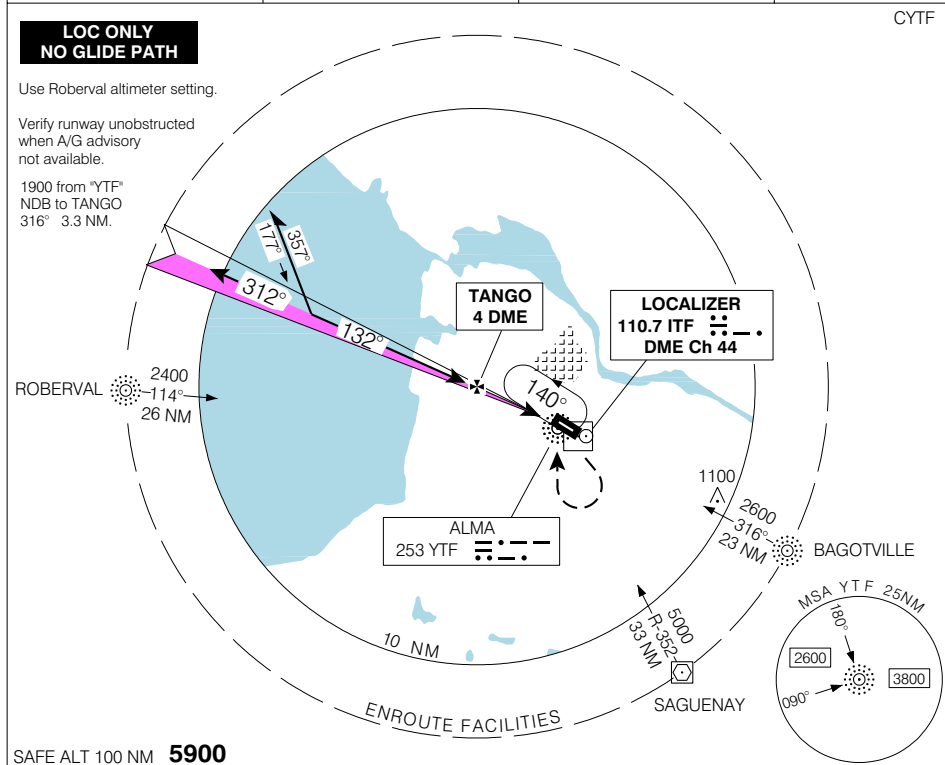
# LOC/DME RWY 13

ALMA  
ALMA QC

<b>ARR/DEP</b> <b>BAGOTVILLE TML</b> 127.2	<b>UNICOM</b> 123.0 (ATF 5 NM) O/T TFC 123.0	<b>RADIO (RCO)</b> QUEBEC 126.7	<b>ELEV 445</b>
			<b>TDZE 13 432</b>

© 2006 Her Majesty The Queen in Right of Canada, Department of Natural Resources. All rights reserved

Source of Canadian Civil Aeronautical Data: © 2006 NAV CANADA. All rights reserved



CATEGORY	A	B	C	D
LOC/DME	<b>880</b>	(448)	1 ½	
CIRCLING	<b>1040</b> (595) 1 ¼	<b>1260</b>	(815)	2 ½

Knots	70	90	110	130	150
Min:Sec					

# LOC/DME RWY 13

EFF 13 APR 06 CHANGE: Editorial

N48 30 32 W71 38 31

VAR 18° W

ALMA QC  
ALMA  
NAD83

# LOC(BC)/DME RWY 31

ALMA  
ALMA QC

<b>ARR/DEP</b> <b>BAGOTVILLE TML</b> <b>127.2</b>	<b>UNICOM</b> <b>123.0 (ATF 5 NM)</b> <b>O/T TFC 123.0</b>	<b>RADIO (RCO)</b> <b>QUEBEC</b> <b>126.7</b>	<b>ELEV 445</b>
			<b>TDZE 31 445</b>

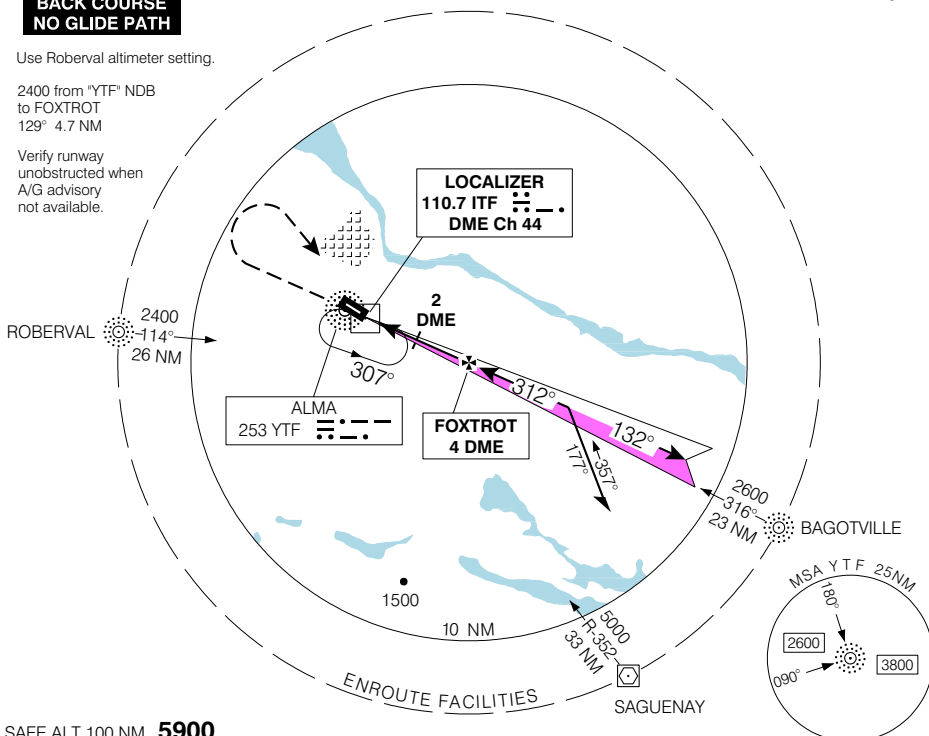
© 2006 Her Majesty The Queen in Right of Canada, Department of Natural Resources. All rights reserved

**BACK COURSE**  
**NO GLIDE PATH**

Use Roberval altimeter setting.

2400 from "YTF" NDB to FOXTROT 129° 4.7 NM

Verify runway unobstructed when A/G advisory not available.

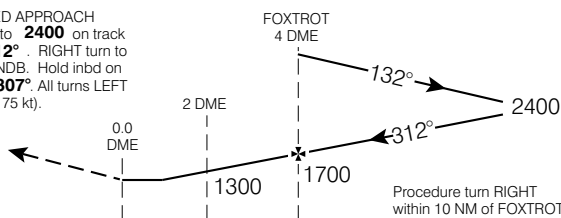


CYTF

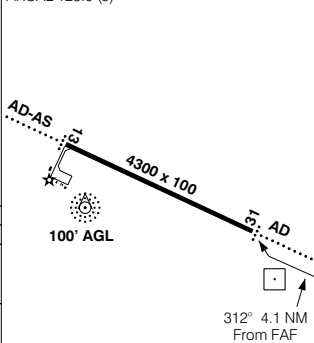
SAFE ALT 100 NM **5900**

**MISSED APPROACH**

Climb to **2400** on track of **312°** - RIGHT turn to "YTF" NDB. Hold inbd on track **307°**. All turns LEFT (max 175 kt).



ARCAL 123.0 (J)



CATEGORY	A	B	C	D
LOC(BC)/DME	<b>960</b>	(515)	1 ½	
CIRCLING	<b>1040</b> (595) 1 ¾	<b>1260</b>	(815) 2 ½	

Knots	70	90	110	130	150
Min:Sec					

# LOC(BC)/DME RWY 31

N48 30 32 W71 38 31

VAR 18° W

ALMA QC  
ALMA  
NAD83

EFF 13 APR 06

CHANGE: Editorial

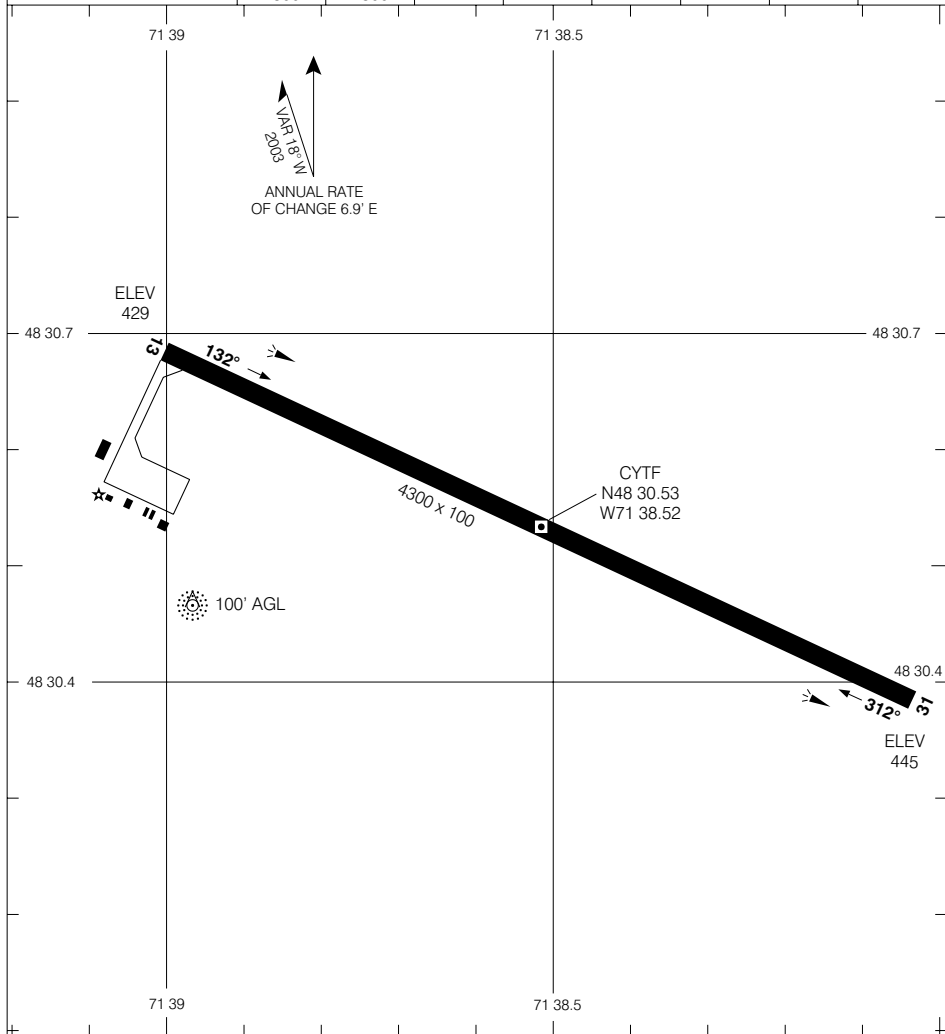
Source of Canadian Civil Aeronautical Data: © 2006 NAV CANADA. All rights reserved

**AERODROME CHART**

ALMA  
ALMA QC

<b>FOR IFR CLEARANCE TELEPHONE BAGOTVILLE TML</b>	<b>UNICOM 123.0 (ATF 5 NM) O/T TFC 123.0</b>	<b>DEP BAGOTVILLE TML 127.2</b>
---	--	---

DECLARED DISTANCES	13	31						
	TORA	4300	4300					
TODA	4300	4300						
ASDA	4300	4300						
LDA	4300	4300						



<p>TAKE-OFF MINIMA</p> <p>Rwys 13, 31: ½</p>	<p>SCALE IN FEET</p> <p>1000 0 1000</p>
--	---

**AERODROME CHART**  
EFF 13 APR 06

CHANGE: Editorial

ALMA QC  
ALMA  
NAD83

© 2006 Her Majesty The Queen in Right of Canada, Department of Natural Resources. All rights reserved. Source of Canadian Civil Aeronautical Data: © 2006 NAV CANADA. All rights reserved.