

RNAV (GNSS) RWY 13

BONAVENTURE
BONAVENTURE QC

NO CTL - BCST INTENTIONS ON 126.7 WITHIN 15 MIN OF ETA AND PRIOR TO DESCENT, THEN ON MF 5 MIN PRIOR TO COMMENCING APCH	RADIO (DRCO) QUEBEC 123.55	UNICOM (AU) 123.0 (MF 5 NM) O/T TFC 123.0	ELEV 123
			TDZE 13 123

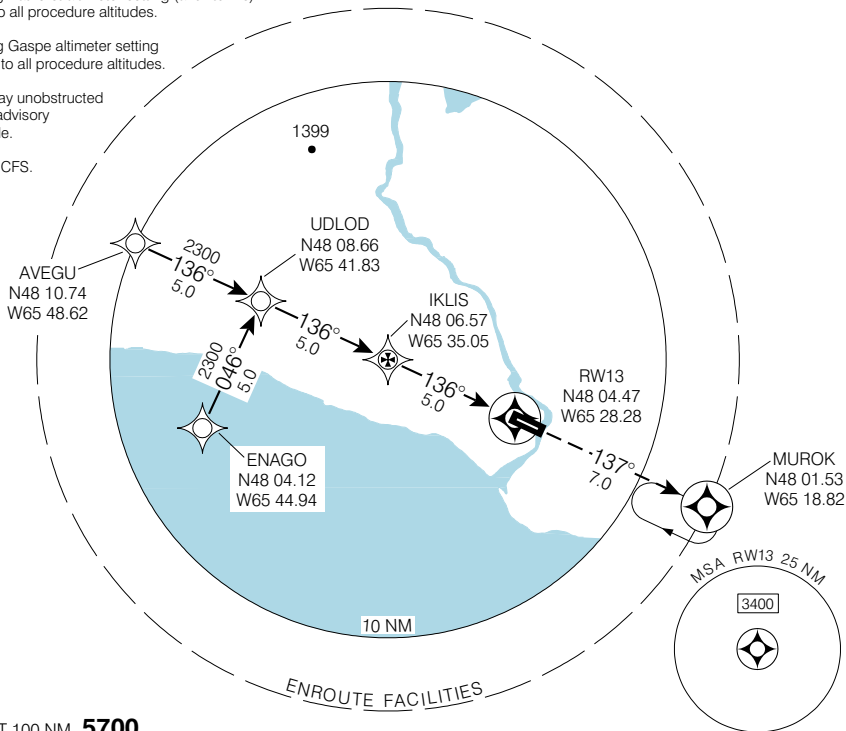
When using Bathurst altimeter setting (avbl ltd hrs) add **80'** to all procedure altitudes.

When using Gaspé altimeter setting add **140'** to all procedure altitudes.

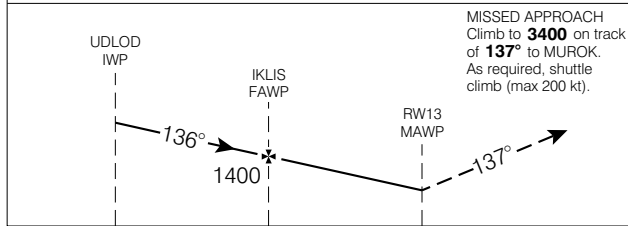
Verify runway unobstructed when A/G advisory not available.

DRCO see CFS.

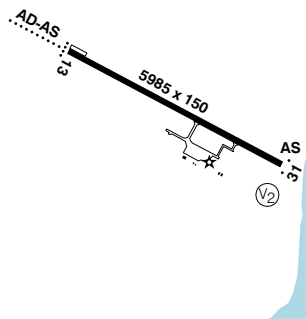
CYVB



SAFE ALT 100 NM **5700**



ARCAL 123.0 (see CFS)



CATEGORY	A	B	C	D
LNAV / VNAV	NOT AUTHORIZED			
LNAV	720	(597)	1 ¾	
CIRCLING	720	(597) 1 ¾	720	760
			(597) 2	(637) 2

Knots	70	90	110	130	150
Min:Sec					

RNAV (GNSS) RWY 13

N48 04 16 W65 27 37

VAR 22° W (1995)

BONAVENTURE QC
BONAVENTURE

EFF 13 APR 06

CHANGE: GPS to GNSS

NAD83

NDB RWY 13

BONAVENTURE
BONAVENTURE QC

NO CTL - BCST INTENTIONS ON 126.7 WITHIN 15 MIN OF ETA AND PRIOR TO DESCENT, THEN ON MF 5 MIN PRIOR TO COMMENCING APCH	RADIO (DRCO) QUEBEC 123.55	UNICOM (AU) 123.0 (MF 5 NM) O/T TFC 123.0	ELEV 123
			TDZE 13 123

© 2006 Her Majesty The Queen in Right of Canada, Department of Natural Resources. All rights reserved

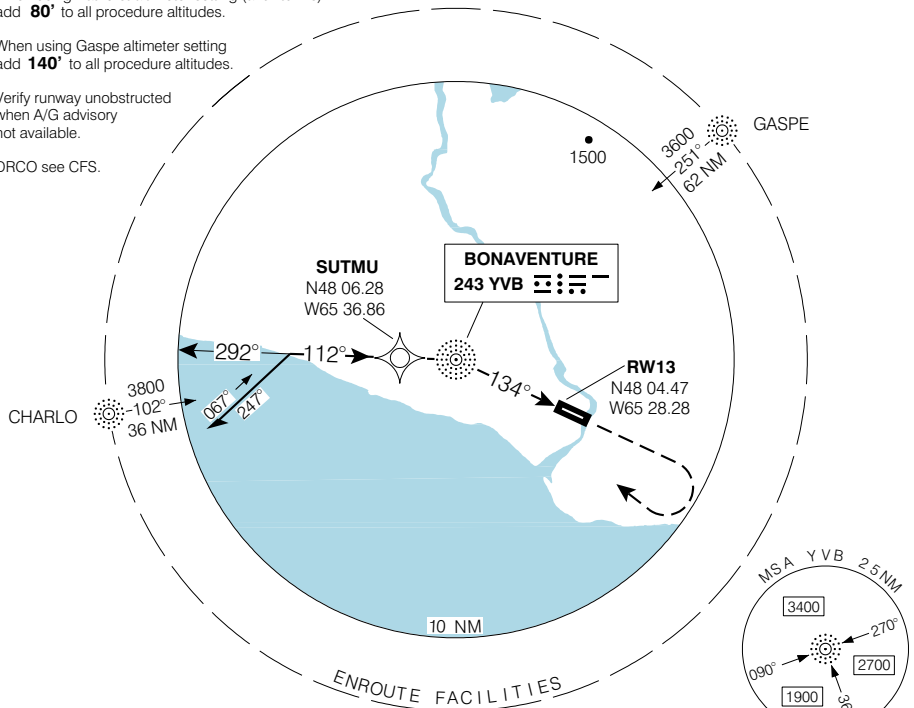
When using Bathurst altimeter setting (avbl ltd hrs) add **80'** to all procedure altitudes.

When using Gaspé altimeter setting add **140'** to all procedure altitudes.

Verify runway unobstructed when A/G advisory not available.

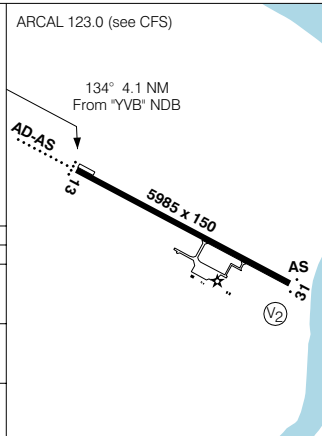
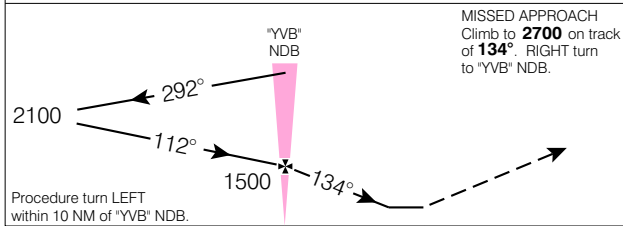
DRCO see CFS.

CYVB



SAFE ALT 100 NM **5700**

Source of Canadian Civil Aeronautical Data: © 2006 NAV CANADA. All rights reserved



CATEGORY	A	B	C	D
NDB	860	(737)		2 ¼
CIRCLING	860	(737)		2 ¼

"YVB" NDB to MAP 4.1 NM					
Knots	70	90	110	130	150
Min:Sec	3:31	2:44	2:14	1:54	1:38

NDB RWY 13

N48 04 16 W65 27 37

VAR 20° W

BONAVENTURE QC
BONAVENTURE

EFF 13 APR 06

CHANGE: Editorial

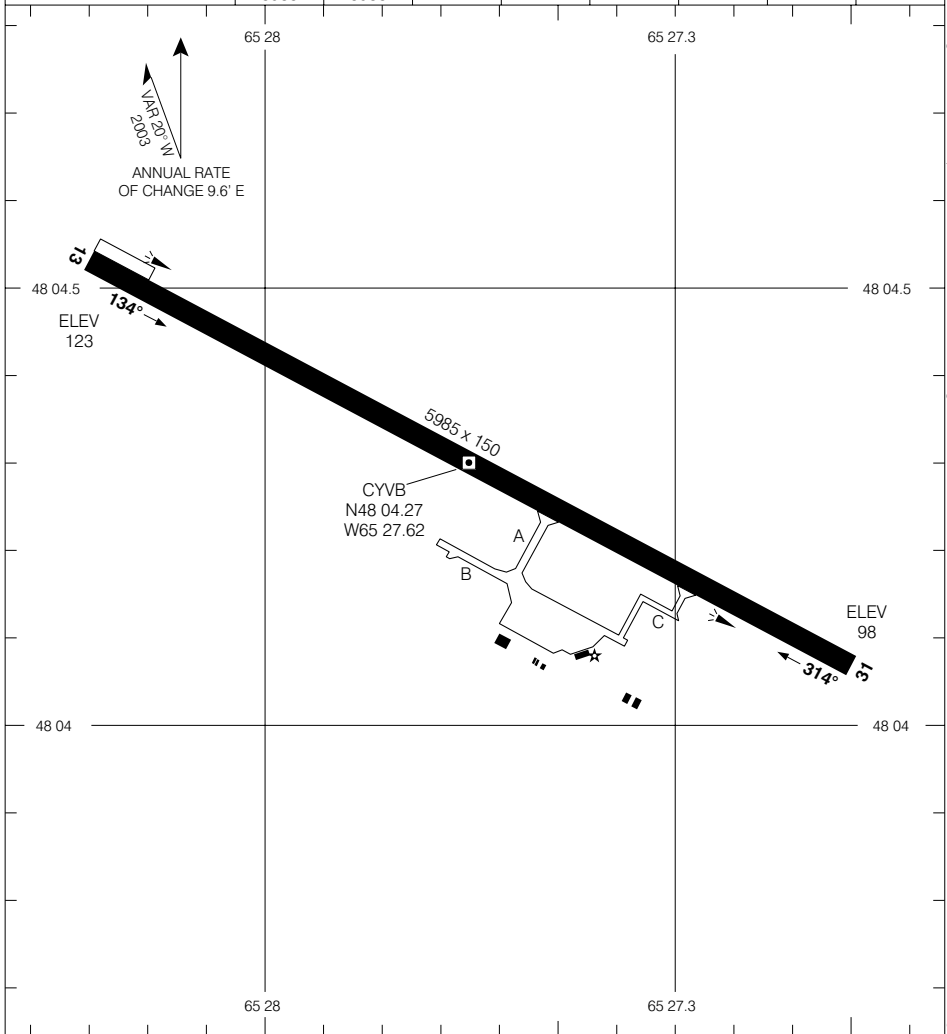
NAD83 ♦

BONAVENTURE
BONAVENTURE QC

AERODROME CHART

RADIO (DRCO) QUEBEC 123.55	UNICOM (AU) 123.0 (MF 5 NM) O/T TFC 123.0
---	--

DECLARED DISTANCES	13	31						
TORA	5985	5985						
TODA	5985	5985						
ASDA	5985	5985						
LDA	5985	5985						



TAKE-OFF MINIMA Rwy 13, 31: ½	SCALE IN FEET
----------------------------------	-------------------

© 2006 Her Majesty The Queen in Right of Canada, Department of Natural Resources. All rights reserved

Source of Canadian Civil Aeronautical Data: © 2006 NAV CANADA. All rights reserved