

RNAV (GNSS) RWY 12

PORT HOPE SIMPSON
PORT HOPE SIMPSON, NL

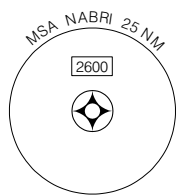
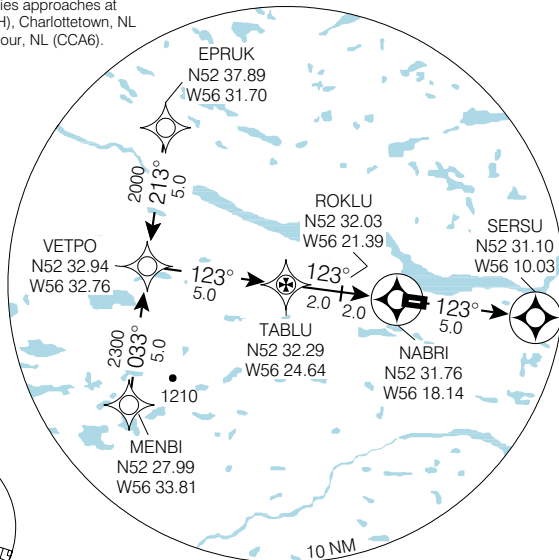
NO CTL-BCST INTENTIONS ON 126.7 WITHIN 15 MIN OF ETA AND PRIOR TO DESCENT, THEN ON ATF 5 MIN PRIOR TO COMMENCING APCH	AWOS MARY'S HARBOUR 122.55	TFC 122.8 (ATF 5 NM)	ELEV 347
			TDZE 12 344

Use Mary's Harbour AWOS altimeter setting.

Verify runway unobstructed.

CAUTION: Approach overlies approaches at Mary's Harbour, NL (CYMH), Charlottetown, NL (CCH4) and Williams Harbour, NL (CCA6).

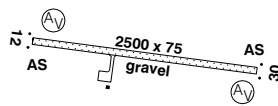
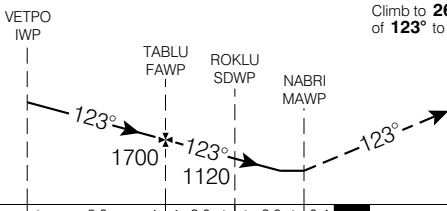
CCP4



SAFE ALT 100 NM **4000**

MISSED APPROACH
Climb to **2600** on track of **123°** to SERSU.

ARCAL 122.8 (K) (see CFS)



CATEGORY	A	B	C	D
LNAV / VNAV	NOT AUTHORIZED			NOT AUTHORIZED
LNAV	1060	(716)	2 ¼	NOT AUTHORIZED
* CIRCLING	1060	(716)	2 ¼	NOT AUTHORIZED

AV Rwy 12 & 30: 4°					
Knots	70	90	110	130	150
Min:Sec					

RNAV (GNSS) RWY 12

N52 31 41 W56 17 10

VAR 26° W (2000)

PORT HOPE SIMPSON, NL
PORT HOPE SIMPSON

EFF 13 APR 06

CHANGE: Apc slope

NAD83

RNAV (GNSS) RWY 30

PORT HOPE SIMPSON
PORT HOPE SIMPSON, NL

NO CTL-BCST INTENTIONS ON 126.7 WITHIN 15 MIN OF ETA AND PRIOR TO DESCENT, THEN ON ATF 5 MIN PRIOR TO COMMENCING APCH	AWOS MARY'S HARBOUR 122.55	TFC 122.8 (ATF 5 NM)	ELEV 347
			TDZE 30 344

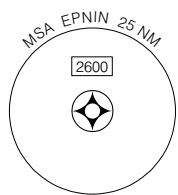
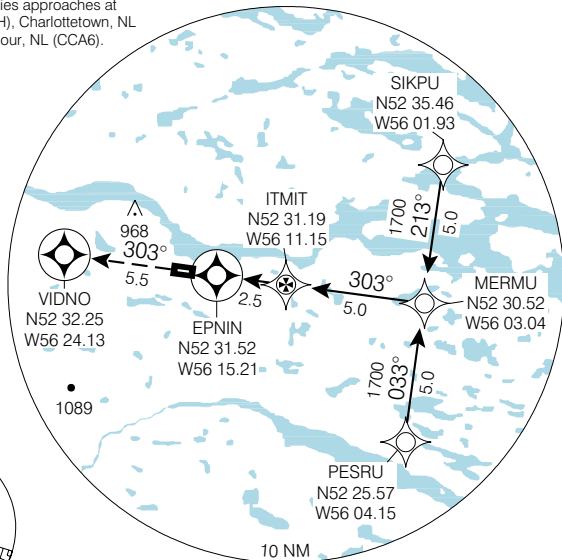
© 2006 Her Majesty The Queen in Right of Canada, Department of Natural Resources. All rights reserved

Use Mary's Harbour AWOS altimeter setting.

CCP4

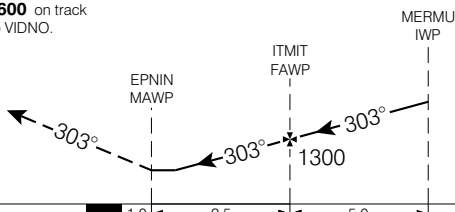
Verify runway unobstructed.

CAUTION: Approach overlies approaches at Mary's Harbour, NL (CYMH), Charlottetown, NL (CCH4) and Williams Harbour, NL (CCA6).

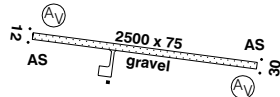


SAFE ALT 100 NM **4000**

MISSED APPROACH
Climb to **2600** on track of **303°** to VIDNO.



ARCAL 122.8 (K) (see CFS)



Source of Canadian Civil Aeronautical Data: © 2006 NAV CANADA. All rights reserved

CATEGORY	A	B	C	D
LNAV / VNAV	NOT AUTHORIZED			
LNAV	880	(536)	1%	
* CIRCLING	940	(593) 1%	940	NOT AUTHORIZED
			(593) 2	

AV Rwys 12 & 30; 4°	Knots	70	90	110	130	150
	Min:Sec					

RNAV (GNSS) RWY 30

N52 31 41 W56 17 10 VAR 26° W (2000)

PORT HOPE SIMPSON, NL
PORT HOPE SIMPSON

EFF 13 APR 06

CHANGE: Apc slope

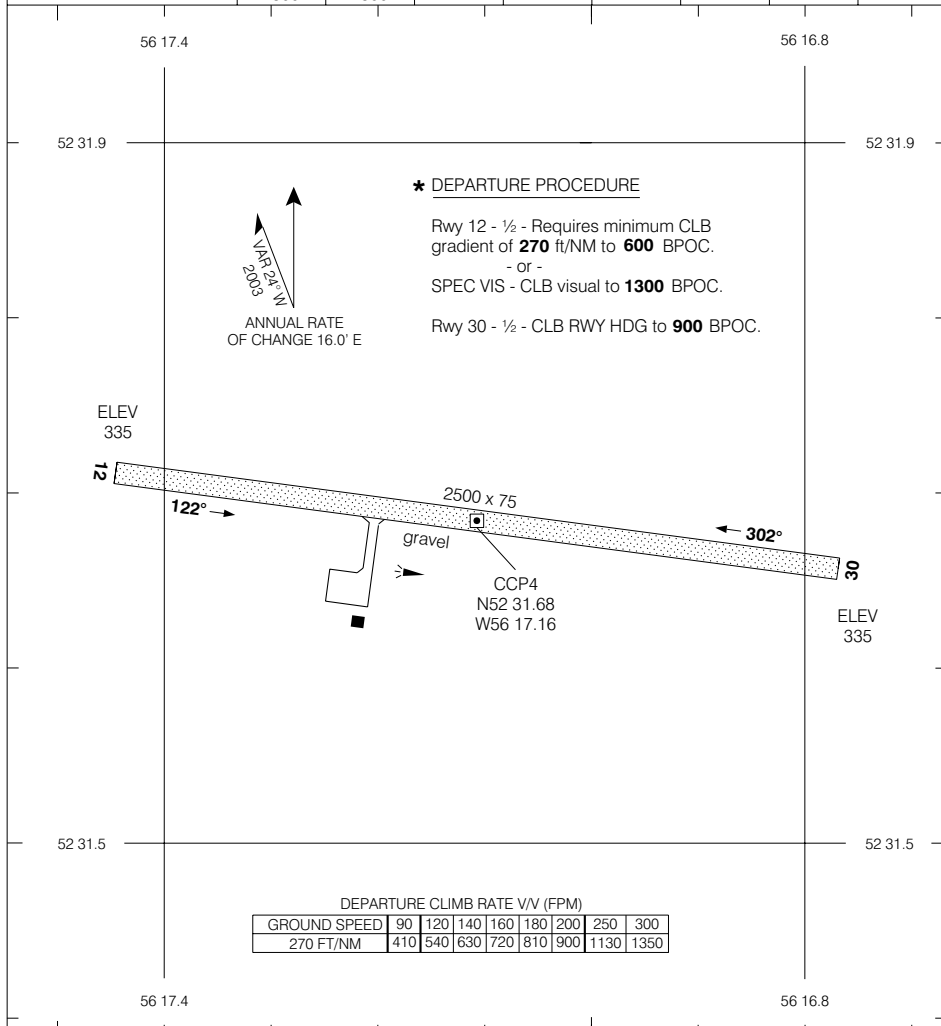
NAD83

AERODROME CHART

PORT HOPE SIMPSON
PORT HOPE SIMPSON NL

AWOS MARY'S HARBOUR 122.55	TFC 122.8 (ATF 5 NM)
---	---------------------------------

DECLARED DISTANCES		12	30				
TORA	2500	2500					
TODA	2500						
ASDA	2500						
LDA	2500						



TAKE-OFF MINIMA	SCALE IN FEET
Rwys 12, 30: *	800 0 800

© 2006 Her Majesty The Queen in Right of Canada, Department of Natural Resources. All rights reserved. Source of Canadian Civil Aeronautical Data: © 2006 NAV CANADA. All rights reserved.