

RNAV (GNSS) RWY 07

LIVERPOOL
LIVERPOOL NS

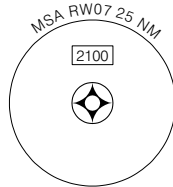
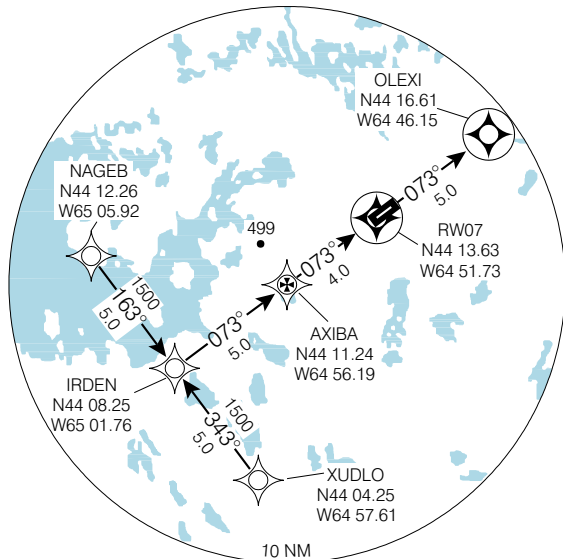
ARR/DEP MONCTON CENTRE 123.9	UNICOM 122.8 (ATF 5 NM)	ELEV 321
		TDZE 07 321

© 2006 Her Majesty The Queen in Right of Canada, Department of Natural Resources. All rights reserved

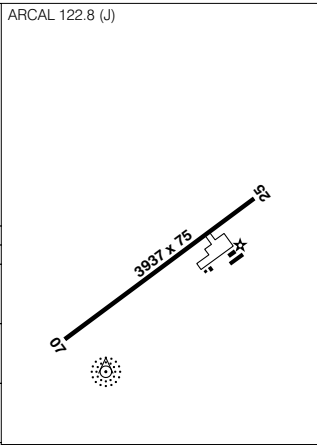
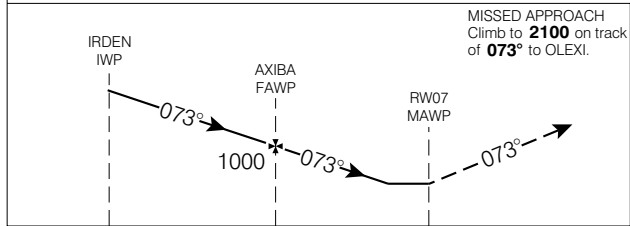
Use Greenwood
altimeter setting

CYAU

Verify runway unobstructed
when A/G advisory
not available.



SAFE ALT 100 NM **2900**



CATEGORY	A	B	C	D
LNAV / VNAV	NOT AUTHORIZED			
LNAV	900	(579)	1 ¼	
CIRCLING	900	(579)	1 ¼	940 (619) 2

Knots	70	90	110	130	150
Min:Sec					

RNAV (GNSS) RWY 07

N44 14 54 W64 51 17

VAR 20° W
(1999)

LIVERPOOL NS
LIVERPOOL

EFF 13 APR 06

CHANGE: GPS to GNSS

NAD83

Source of Canadian Civil Aeronautical Data: © 2006 NAV CANADA All rights reserved

RNAV (GNSS) RWY 25

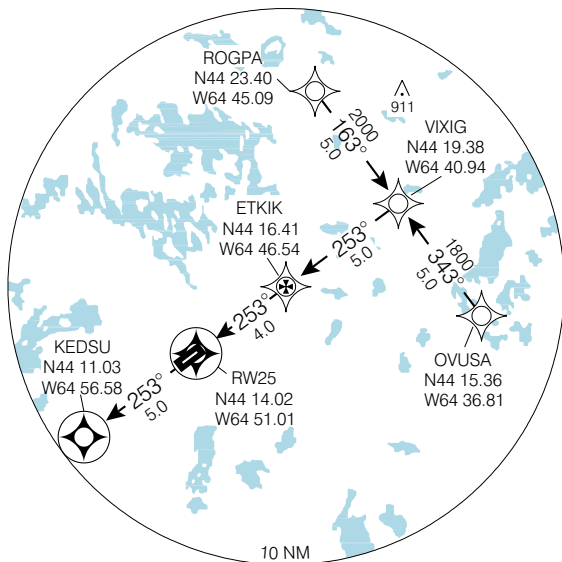
LIVERPOOL
LIVERPOOL NS

ARR/DEP MONCTON CENTRE 123.9	UNICOM 122.8 (ATF 5 NM)	ELEV 321
		TDZE 25 317

Use Greenwood altimeter setting

Verify runway unobstructed when A/G advisory not available.

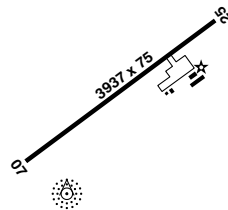
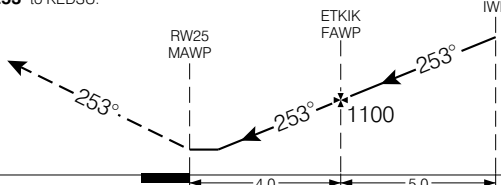
CYAU



SAFE ALT 100 NM **2900**

MISSED APPROACH
Climb to **2100** on track of **253°** to KEDSU.

ARCL 122.8 (J)



CATEGORY	A	B	C	D
LNAV / VNAV	NOT AUTHORIZED			
LNAV	900	(583)	1 ¾	
CIRCLING	900	(579) 1 ¾	940	(619) 2

Knots	70	90	110	130	150
Min:Sec					

RNAV (GNSS) RWY 25

N44 14 54 W64 51 17

VAR 20° W (1999)

LIVERPOOL NS

LIVERPOOL

NAD83

EFF 13 APR 06

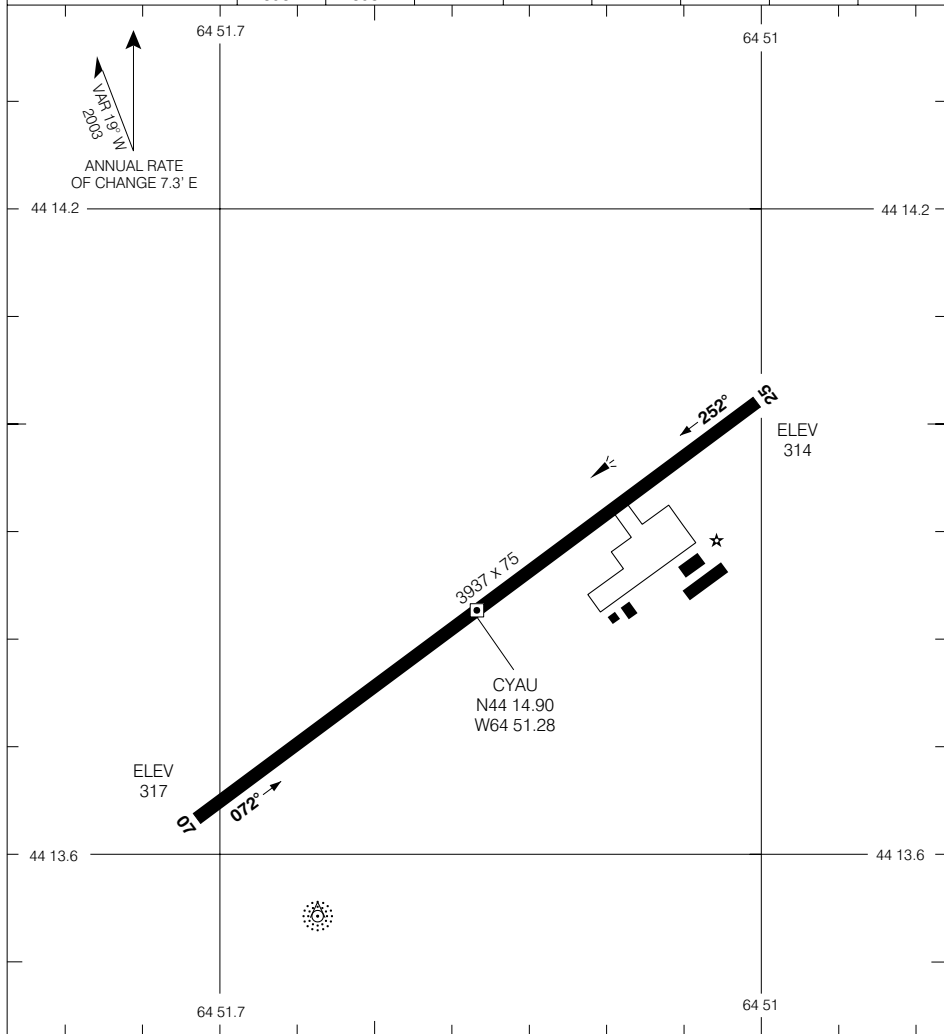
CHANGE: GPS to GNSS

AERODROME CHART

LIVERPOOL
LIVERPOOL NS

<p>UNICOM 122.8 (ATF 5 NM)</p>	<p>DEP MONCTON CENTRE 123.9</p>
---	---

DECLARED DISTANCES	07	25						
TORA	3937	3937						
TODA	3937	3937						
ASDA	3937	3937						
LDA	3937	3937						



<p>TAKE-OFF MINIMA</p> <p>Rwys 07, 25: ½</p>	<p>SCALE IN FEET</p> <p>1000 1000</p>
--	--

AERODROME CHART
EFF 13 APR 06

CHANGE: Editorial

LIVERPOOL NS
LIVERPOOL
NAD83

© 2006 Her Majesty The Queen in Right of Canada, Department of Natural Resources. All rights reserved

Source of Canadian Civil Aeronautical Data: © 2006 NAV CANADA. All rights reserved