

RNAV (GNSS) RWY 10

BATHURST
BATHURST NB

NO CTL- BCST INTENTIONS ON 126.7 WITHIN 15 MIN OF ETA AND PRIOR TO DESCENT, THEN ON ATF 5 MIN PRIOR TO COMMENCING APCH

ARR/DEP MONCTON CENTRE 134.25

UNICOM (AU) 122.8 (ATF 5 NM) O/T TFC 122.8

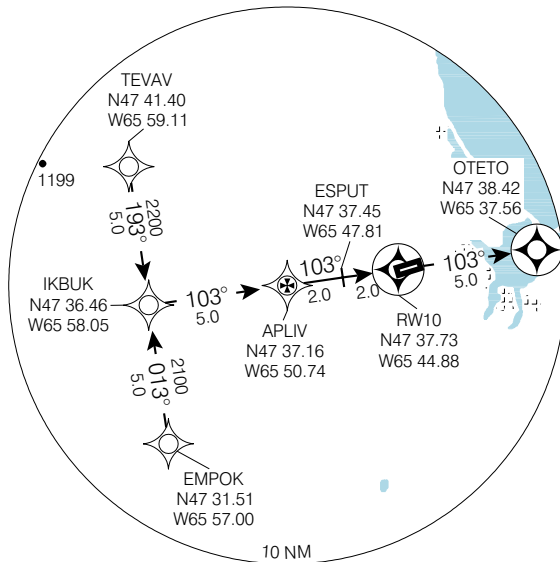
RADIO (DRCO) QUEBEC 123.45

ELEV 193 TDZE 10 193

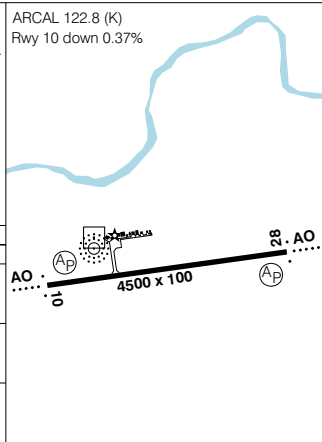
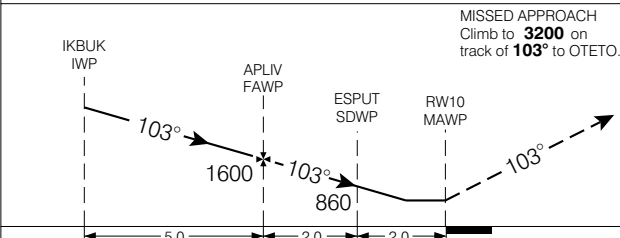
Altimeter setting available limited hours.

CZBF

Verify runway unobstructed when A/G advisory not available.



SAFE ALT 100 NM **5700**



CATEGORY	A	B	C	D
LNAV / VNAV	NOT AUTHORIZED			
LNAV	660	(467)	1 ½	
CIRCLING	700 (507)	1 ½	720 (527)	2
			800 (607)	2

Knots	70	90	110	130	150
Min:Sec					

RNAV (GNSS) RWY 10

N47 37 47 W65 44 20

VAR 21° W (1999)

BATHURST NB

EFF 13 APR 06

CHANGE: GPS to GNSS

BATHURST

NAD83

RNAV (GNSS) RWY 28

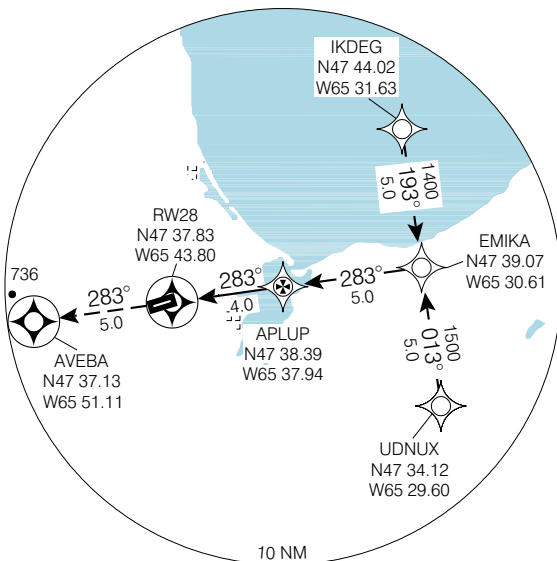
BATHURST
BATHURST NB

NO CTL- BCST INTENTIONS ON 126.7 WITHIN 15 MIN OF ETA AND PRIOR TO DESCENT, THEN ON ATF 5 MIN PRIOR TO COMMENCING APCH	ARR/DEP MONCTON CENTRE 134.25	UNICOM (AU) 122.8 (ATF 5 NM) O/T TFC 122.8	RADIO (DRCO) QUEBEC 123.45	ELEV 193 TDZE 28 189
	Altimeter setting available limited hours.			

Altimeter setting available limited hours.

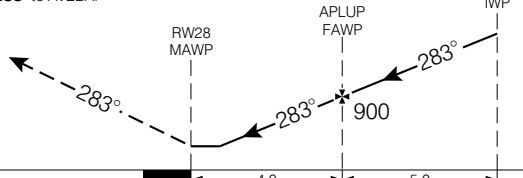
Verify runway unobstructed when A/G advisory not available.

CZBF

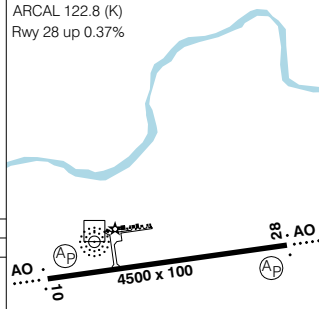


SAFE ALT 100 NM **5700**

MISSED APPROACH
Climb to **3200** on track of **283°** to AVEBA.



ARCAL 122.8 (K)
Rwy 28 up 0.37%



CATEGORY	A	B	C	D
LNAV / VNAV	NOT AUTHORIZED			
LNAV	540	(351)	1 ¼	
CIRCLING	700	(507) 1 ½	720	800
			(527) 2	(607) 2

Knots	70	90	110	130	150
Min:Sec					

RNAV (GNSS) RWY 28

N47 37 47 W65 44 20

VAR 21° W
(1999)

BATHURST NB
BATHURST
NAD83

EFF 13 APR 06

CHANGE: GPS to GNSS

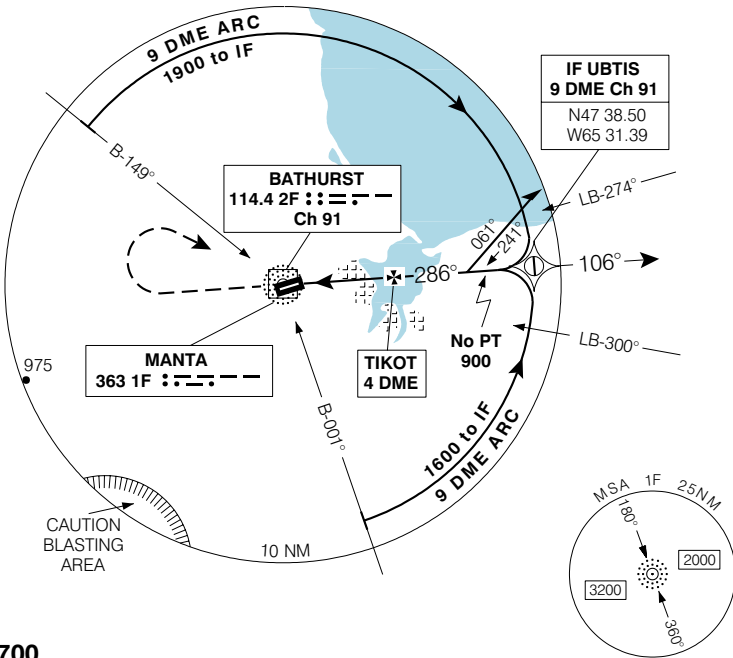
NDB RWY 28

BATHURST
BATHURST NB

NO CTL-BCST INTENTIONS ON 126.7 WITHIN 15 MIN OF ETA AND PRIOR TO DESCENT, THEN ON ATF 5 MIN PRIOR TO COMMENCING APCH	ARR/DEP MONCTON CENTRE 134.25	UNICOM (AU) 122.8 (ATF 5 NM) O/T TFC 122.8	RADIO (DRCO) QUEBEC 123.45	ELEV 193 TDZE 28 189
	CZBF			

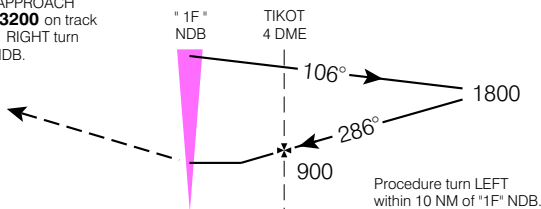
Altimeter setting available limited hours.

Verify runway unobstructed when A/G advisory not available.



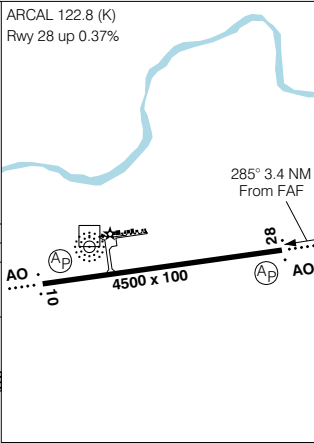
SAFE ALT 100 NM **5700**

MISSED APPROACH
Climb to **3200** on track of **286°**. RIGHT turn to *1F* NDB.



ARCAL 122.8 (K)

Rwy 28 up 0.37%



CATEGORY	A	B	C	D
NDB/DME	600	(411)	1 ¼	
CIRCLING	700 (507)	1 ½	700 (507) 2	800 (607) 2
NDB	740	(551)	1 ¾	
CIRCLING	740 (547)	1 ¾	740 (547) 2	800 (607) 2

Knots	70	90	110	130	150
Min:Sec					

NDB RWY 28

N47 37 47 W65 44 20 VAR 20° W

BATHURST NB
BATHURST
NAD83

EFF 13 APR 06 CHANGE: Editorial

© 2006 Her Majesty The Queen in Right of Canada, Department of Natural Resources. All rights reserved.

Source of Canadian Civil Aeronautical Data: © 2006 NAV CANADA. All rights reserved.

NDB/DME RWY 10

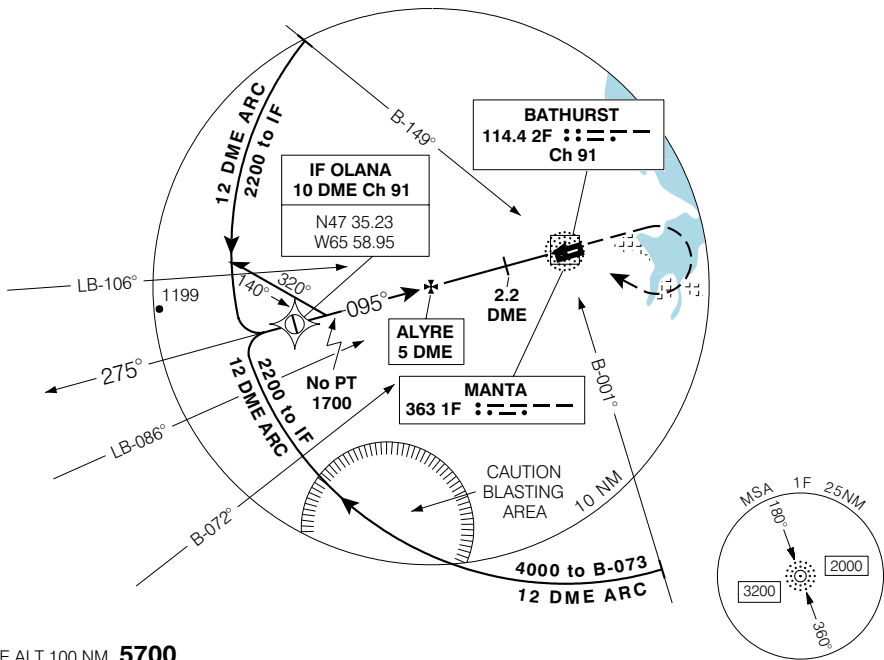
BATHURST
BATHURST NB

NO CTL-BCST INTENTIONS ON 126.7 WITHIN 15 MIN OF ETA AND PRIOR TO DESCENT, THEN ON ATF 5 MIN PRIOR TO COMMENCING APCH	ARR/DEP MONCTON CENTRE 134.25	UNICOM (AU) 122.8 (ATF 5 NM) O/T TFC 122.8	RADIO (DRCO) QUEBEC 123.45	ELEV 193
				TDZE 10 193

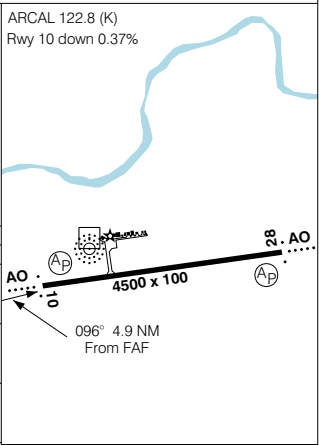
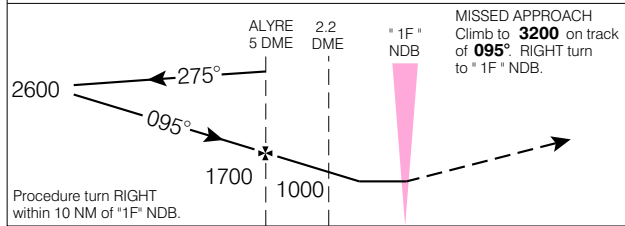
Altimeter setting available limited hours.

Verify runway unobstructed when A/G advisory not available.

CZBF



SAFE ALT 100 NM **5700**



CATEGORY	A	B	C	D					
NDB/DME	700		(507)	1 ½					
CIRCLING	700	(507)	1 ½	700	(507)	2	800	(607)	2

Knots	70	90	110	130	150
Min:Sec					

NDB/DME RWY 10

EFF 13 APR 06 CHANGE: Editorial

N47 37 47 W65 44 20 VAR 20° W

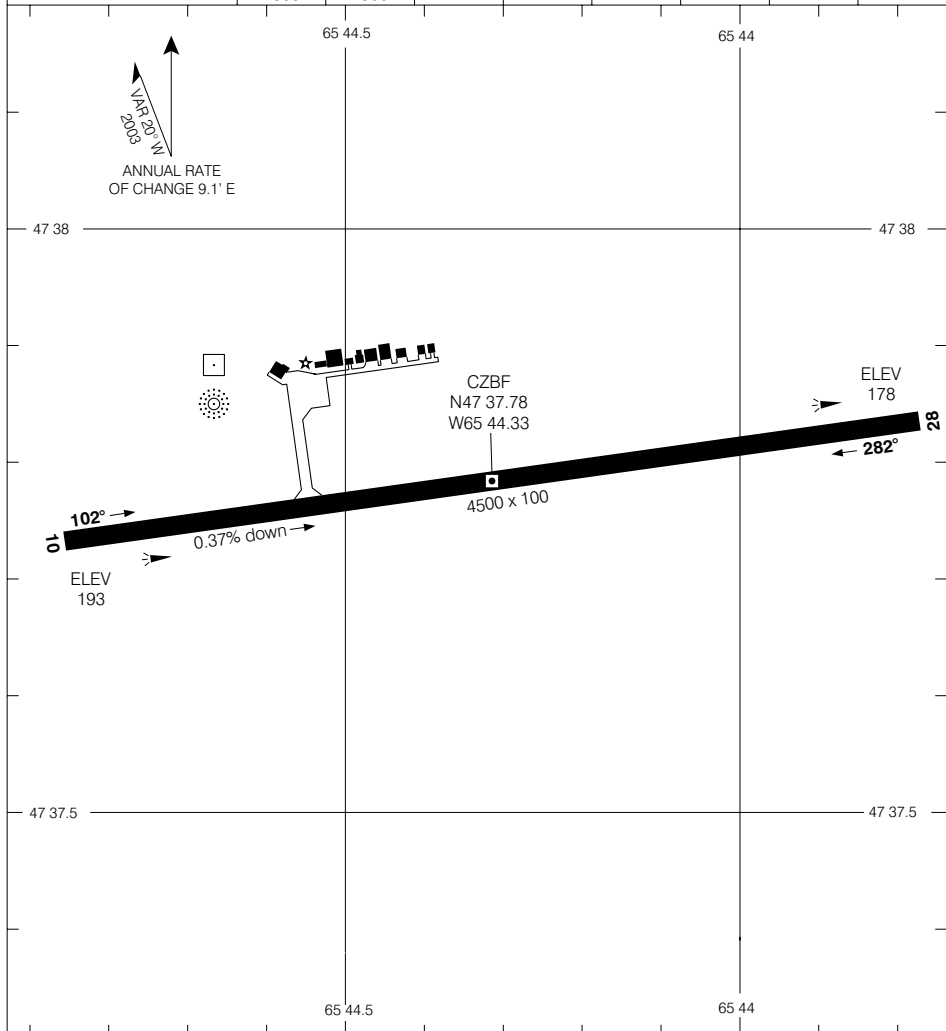
BATHURST NB
BATHURST
NAD83

AERODROME CHART

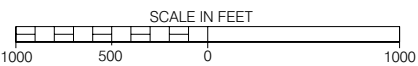
BATHURST
BATHURST NB

UNICOM (AU) 122.8 (ATF 5 NM)	RADIO (DRCO) QUEBEC 123.45	DEP MONCTON CENTRE 134.25
--	---	--

DECLARED DISTANCES	10	28						
	TORA	4500	4500					
TODA	5500	5500						
ASDA	4746	4740						
LDA	4500	4500						



TAKE-OFF MINIMA
Rwys 10, 28: 1/2



© 2006 Her Majesty The Queen in Right of Canada, Department of Natural Resources. All rights reserved.
 Source of Canadian Civil Aeronautical Data: © 2006 NAV CANADA. All rights reserved.